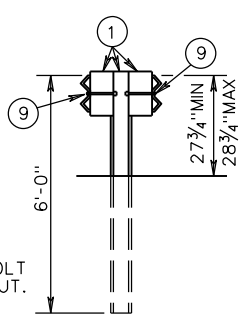
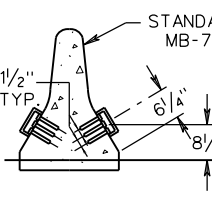


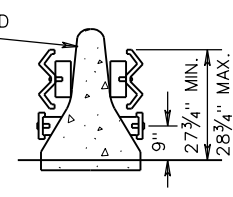
SECTION A-A



SECTION B-B



SECTION C-C (W-BEAM OMITTED)



SECTION D-D

NOTES:

1. ALL GUARDRAIL POSTS ARE TO BE STEEL.
2. ALL GUARDRAIL COMPONENTS ARE TO BE IN ACCORDANCE WITH VDOT ROAD AND BRIDGE STANDARDS.
3. POSTS 1, 2, 3, 4 AND 5 REQUIRE AN ADDITIONAL HOLE TO ATTACH LOWER BLOCKS AND/OR RUBRAIL. RUBRAIL IS NOT BOLTED TO POSTS 2 AND 4.
4. BOTTOM WOOD BLOCKS LOCATED ON POSTS 1 THROUGH 4 ARE TO BE DRILLED AND SECURED WITH 5/8" GUARDRAIL BOLTS (LENGTH AS REQUIRED)
5. APPROPRIATE LENGTH 7/8" ASTM A449 HEX BOLTS WITH WASHERS ARE TO BE USED WITH HOLES DRILLED THROUGH THE CONCRETE MEDIAN BARRIER ATTACHING THE W-BEAM TERMINAL CONNECTORS ON EACH SIDE. BOLTS TO PROJECT NO MORE THAN 1/2" BEYOND NUTS. USE LOCK WASHERS UNDER NUTS.

- TYPE I TWO RUN-ON SECTIONS (WITH 2 RUBRAILS SHOWN)
- TYPE II ONE RUN-ON SECTION (WITH 1 RUBRAIL RETAINED)
ONE RUN-OFF SECTION (WITH 1 RUBRAIL REMOVED)
- TYPE III TWO RUN-OFF SECTIONS (WITH 2 RUBRAILS REMOVED)

RUBRAIL WOOD BLOCKS 7" x 4"	
POST	THICKNESS
1	4 1/4"
2	3 1/4"
3	2"
4	1"

ITEM	MATERIALS/SPECIFICATIONS/NOTES	ITEM	MATERIALS/SPECIFICATIONS/NOTES
1	ST'D. W6 X 8.5 OR W6 X 9 STEEL POSTS, ST'D. 6" X 8" X 14" LONG TREATED PINE BLOCK OR RE-CYCLED MATERIAL.	5	RECTANGULAR PLATE WASHER (SEE STANDARD GR-HDW)
2	ST'D. W-BEAM TERMINAL CONNECTOR	6	BENT PLATE RUBRAIL (SEE SHEET 2 OF 2)
3	STANDARD W-BEAM RAIL	7	C6 x 8.2 RUBRAIL (SEE SHEET 2 OF 2)
4	5/8" X 2" LONG GUARDRAIL BOLT AND RECESSED NUT	8	WOOD BLOCKOUT FOR RUBRAIL (SEE SHEET 2 OF 2)
		9	5/8" X 10" LONG GUARDRAIL BOLT AND RECESSED NUT

A COPY OF THE ORIGINAL SEALED AND SIGNED DRAWING IS ON FILE IN THE CENTRAL OFFICE.

SPECIFICATION REFERENCE 505	<h2 style="margin: 0;">BLOCKED-OUT W-BEAM MEDIAN BARRIER-FIXED OBJECT ATTACHMENT</h2> <p style="margin: 0;">(FOR USE BETWEEN STANDARD MB-7D AND STANDARD MB-3)</p> <p style="margin: 0; font-size: small;">VIRGINIA DEPARTMENT OF TRANSPORTATION</p>	ROAD AND BRIDGE STANDARDS REVISION DATE 01/14 SHEET 1 OF 2 501.31
------------------------------------	--	--