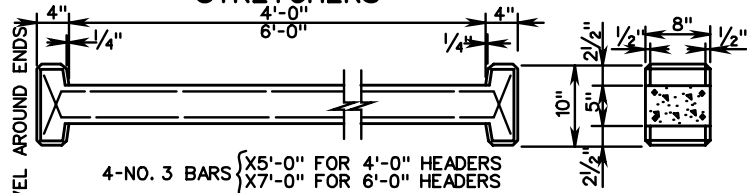
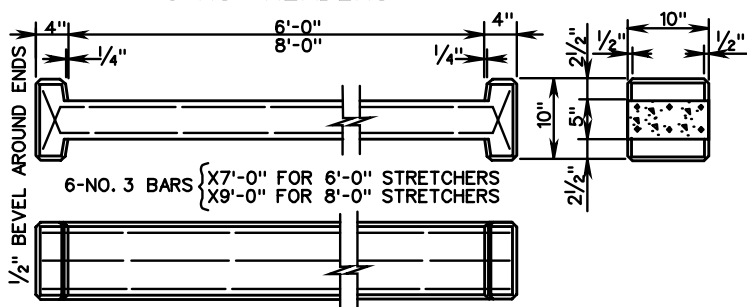


**STRETCHERS**



**5"X8" HEADERS**



**5"X10" HEADERS**

UNIT	WEIGHT	CU. FT.
5"X8"X4'-0" HEADER	235#	1.48
5"X8"X6'-0" HEADER	325#	2.04
5"X10"X6'-0" HEADER	405#	2.55
5"X10"X8'-0" HEADER	515#	3.24
6"X6"X6'-0" STRETCHER	240#	1.50
6"X8"X6'-0" HEADER	320#	2.00
6"X10"X6'-0" HEADER	400#	2.50
5 3/4"X10"X10" BLOCK	50#	0.33

NOTES:  
 ALL REINFORCING TO BE NO. 3 BARS PLACED 1" CLEAR FROM SURFACE OF CONCRETE.  
 BARS TO BE HELD IN POSITION BY CHAIRS HAVING NON-CORROSIVE TIPS  
 CLASS A-5 CONCRETE TO BE USED EXCEPT MAXIMUM SIZE AGGREGATE TO BE NO. 7.

HEIGHT OF WALL	UNITS REQUIRED FOR TYPICAL WALL 96' LONG							WALL SECTION	
	HEADERS				STRETCHERS				BL'K'S 5 3/4"X 10"X10"
	5"X8" X4'-0"	5"X8" X6'-0"	5"X10" X6'-0"	5"X10" X8'-0"	6"X6" X6'-0"	6"X8" X6'-0"	6"X10" X6'-0"		
2'-4"	34				32	48		"A"	
3'-3"	51				64	48			
4'-2"	68				96	48			
5'-1"	85				128	48			
6'-0"	102				160	48			
6'-0"		102			224	16		"B"	
6'-11"		119			256	16			
7'-10"		136			288	16			
8'-9"		153			320	16			
9'-8"		170			288	80			
10'-7"		187			288	112			
11'-6"		204			288	144			
12'-5"			204	17	192	272	17	"C"	
13'-4"			204	34	192	304	34		
14'-3"			204	51	192	336	51		
15'-2"			204	68	192	368	68		
16'-1"		68	289		192	336	144		"D"
17'-0"		85	306		192	320	208		
17'-11"		102	323		192	320	256		
18'-10"		119	340		192	320	304		
19'-9"		136	357		192	320	352		
20'-8"		153	374		192	320	400		
21'-7"		170	391		192	320	448		
22'-6"		187	408		192	320	496		
23'-5"		204	425		192	320	544		

CRIBBING IS TO BE PLACED ON A FOUNDATION OF FIRM BEARING MATERIAL MEETING THE APPROVAL OF THE ENGINEER.

THIS FOUNDATION IS TO BE AT LEAST 3' BELOW THE SURFACE OF THE GROUND, BEYOND ALL DANGER OF FROST, UNLESS ON SOLID ROCK.

FOR DETAILS NOT SHOWN ON THIS SHEET, SEE SHEET 1 OF 2.

BLOCKS SHALL BE SET IN MORTAR.

SPECIFICATION REFERENCE

506

**STANDARD REINFORCED CONCRETE CRIB WALL**

VIRGINIA DEPARTMENT OF TRANSPORTATION

**VDOT**

ROAD AND BRIDGE STANDARDS

REVISION DATE

SHEET 2 OF 2

402.02