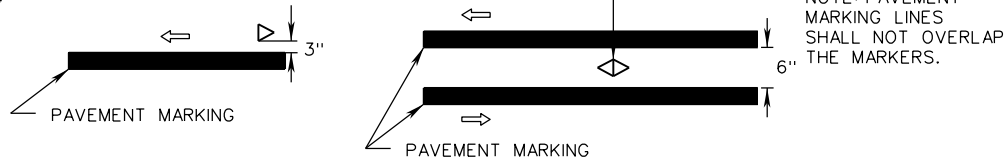


PM-8

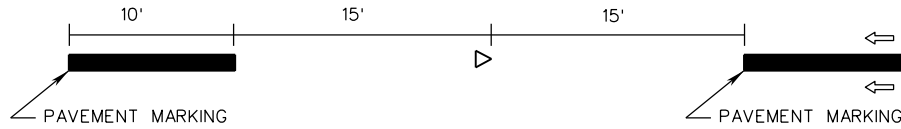


MARKERS ADJACENT TO SOLID LINE

MARKERS BETWEEN DOUBLE SOLID LINES

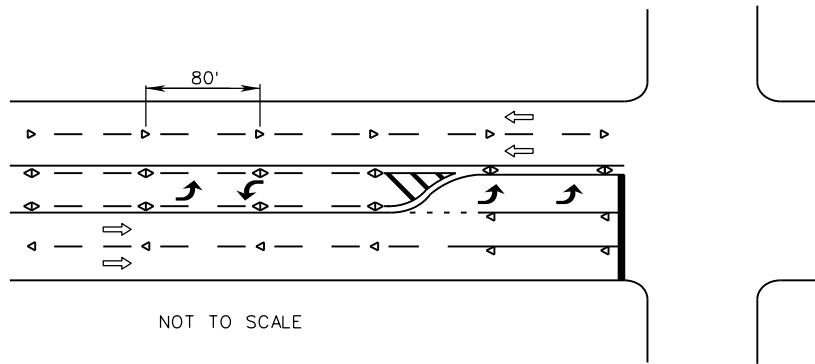
KEY:

- ◊ TWO WAY TRAFFIC MARKER, WITH POINTS INDICATING RETROREFLECTIVE FACE
- ◄ ONE WAY TRAFFIC MARKER, WITH POINT INDICATING RETROREFLECTIVE FACE
- ⇒ INDICATES DIRECTION OF TRAVEL



MARKERS SUPPLEMENTING BROKEN LINES

GENERAL PLACEMENT



NOT TO SCALE

NOTES:

1. EXACT LOCATIONS OF THE MARKERS SHALL BE APPROVED BY THE ENGINEER PRIOR TO INSTALLATION.
2. TYPICAL SPACING SHALL BE 80' C-C WHEN USED ON A TANGENT SECTION OF ROADWAY OR ON HORIZONTAL CURVES LESS THAN 3°, AND SHALL BE 40' C-C WHEN USED ON HORIZONTAL CURVES OF 3° OR MORE, UNLESS OTHERWISE SHOWN IN THE CONTRACT DOCUMENTS OR AS DIRECTED BY THE ENGINEER. SEE SHEET 2 FOR SPECIFIC EXAMPLES.
3. ALL RAISED PAVEMENT MARKERS SHALL BE INSTALLED AT LEAST 2 INCHES FROM ANY SEAM OR PAVEMENT JOINT.
4. RAISED PAVEMENT MARKERS SHALL BE THE SAME COLOR AS THE ADJACENT PAVEMENT MARKING. THE COLOR OF THE BACKSIDE OF RAISED PAVEMENT MARKERS SHALL BE AS SHOWN IN THE TABLE BELOW.
5. ALL RAISED PAVEMENT MARKERS SHALL BE SNOWPLOWABLE RAISED PAVEMENT MARKERS (SRPMS) UNLESS OTHERWISE NOTED IN THE CONTRACT DOCUMENTS.
6. RAISED PAVEMENT MARKERS SHALL BE OMITTED ON BRIDGE DECKS UNLESS OTHERWISE NOTED IN THE CONTRACT DOCUMENTS.

TWO-WAY LEFT TURN LANE AND CENTER LANE LEFT TURN

RAISED PAVEMENT MARKER COLOR		
MARKER TYPE		BACKSIDE COLOR
ONE WAY TRAFFIC	WHITE SNOWPLOWABLE RAISED	RED
	TEMPORARY	BLANK
	YELLOW SNOWPLOWABLE RAISED	BLANK
TWO WAY TRAFFIC	ALL TYPES	MATCH ADJACENT PAVEMENT MARKING

A COPY OF THE ORIGINAL SEALED AND SIGNED DRAWING IS ON FILE IN THE CENTRAL OFFICE.

TYPICAL RAISED PAVEMENT MARKER

LOCATION DETAILS

VIRGINIA DEPARTMENT OF TRANSPORTATION

SPECIFICATION REFERENCE

704



ROAD AND BRIDGE STANDARDS

SHEET 1 OF 2

REVISION DATE

1330.80

01/15