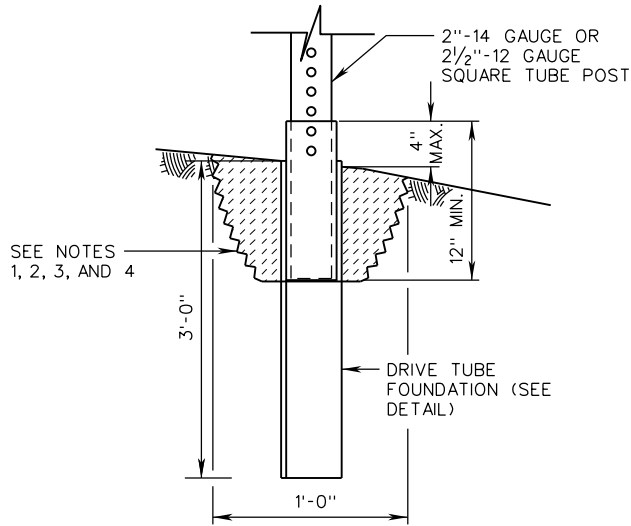


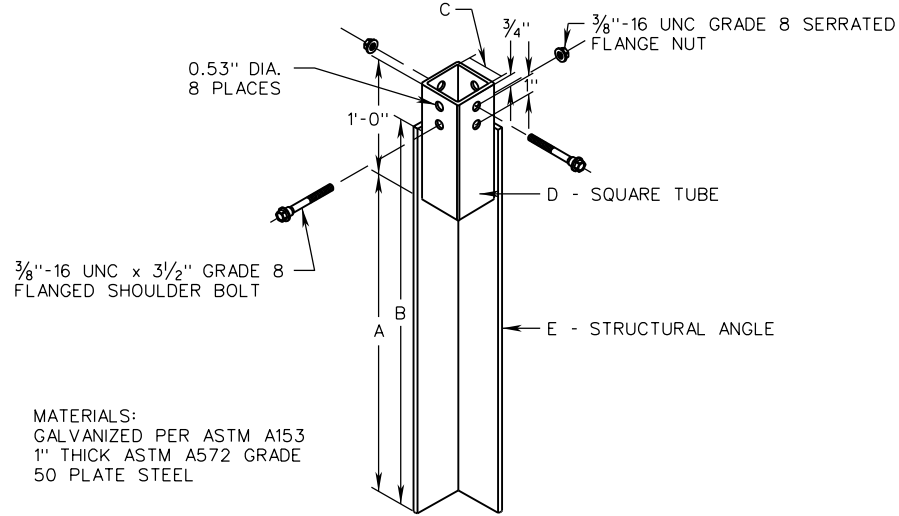
STP-1



FOUNDATION TYPE D AND E

NOTES:

1. EXCAVATE TO A DEPTH OF NO LESS THAN 8" AND NO GREATER THAN 12" PRIOR TO INSTALLATION OF DRIVE TUBE FOUNDATION.
2. THE EXCAVATED AREA SHALL BE BACKFILLED WITH A CEMENTITIOUS MATERIAL AND SHALL BE TAPPED WITH EACH 6" LIFT.
3. THE SQUARE TUBE POST SHALL BE INSERTED INTO THE SLEEVE OF THE DRIVE TUBE FOUNDATION A MINIMUM OF 12".
4. DRIVE CAP SHALL BE UTILIZED FOR INSTALLATION OF DRIVE TUBE FOUNDATION. WHEN USING A POWER DRIVER, A SHANK SHALL ALSO BE REQUIRED.



MATERIALS:
GALVANIZED PER ASTM A153
1" THICK ASTM A572 GRADE
50 PLATE STEEL

DRIVE TUBE FOUNDATION DETAIL

DRIVE TUBE FOUNDATION TABLE		
FOUNDATION TYPE	SIZE OF POST	DRIVE TUBE FOUNDATION DIMENSION
TYPE D	2 INCH 14 GA.	A 27"
		B 36"
		C 2 1/8"
		D 2 1/2" X 2 1/2" X 3/16" ASTM A500 GRADE B
		E 2 1/2" X 2 1/2" X 3/16" ASTM A36
TYPE E	2 1/2 INCH 12 GA.	A 27"
		B 36"
		C 2 5/8"
		D 3" X 3" X 3/16" ASTM A500 GRADE B
		E 3" X 3" X 3/16" ASTM A36



ROAD AND BRIDGE STANDARDS

A COPY OF THE ORIGINAL SEALED AND SIGNED DRAWING IS ON FILE IN THE CENTRAL OFFICE.

**SQUARE TUBE SIGN POST
FOUNDATION TYPE D AND E DETAILS**

SPECIFICATION
REFERENCE

SHEET 8 OF 12

REVISION DATE

VIRGINIA DEPARTMENT OF TRANSPORTATION

700

1321.17

NEW 01/15