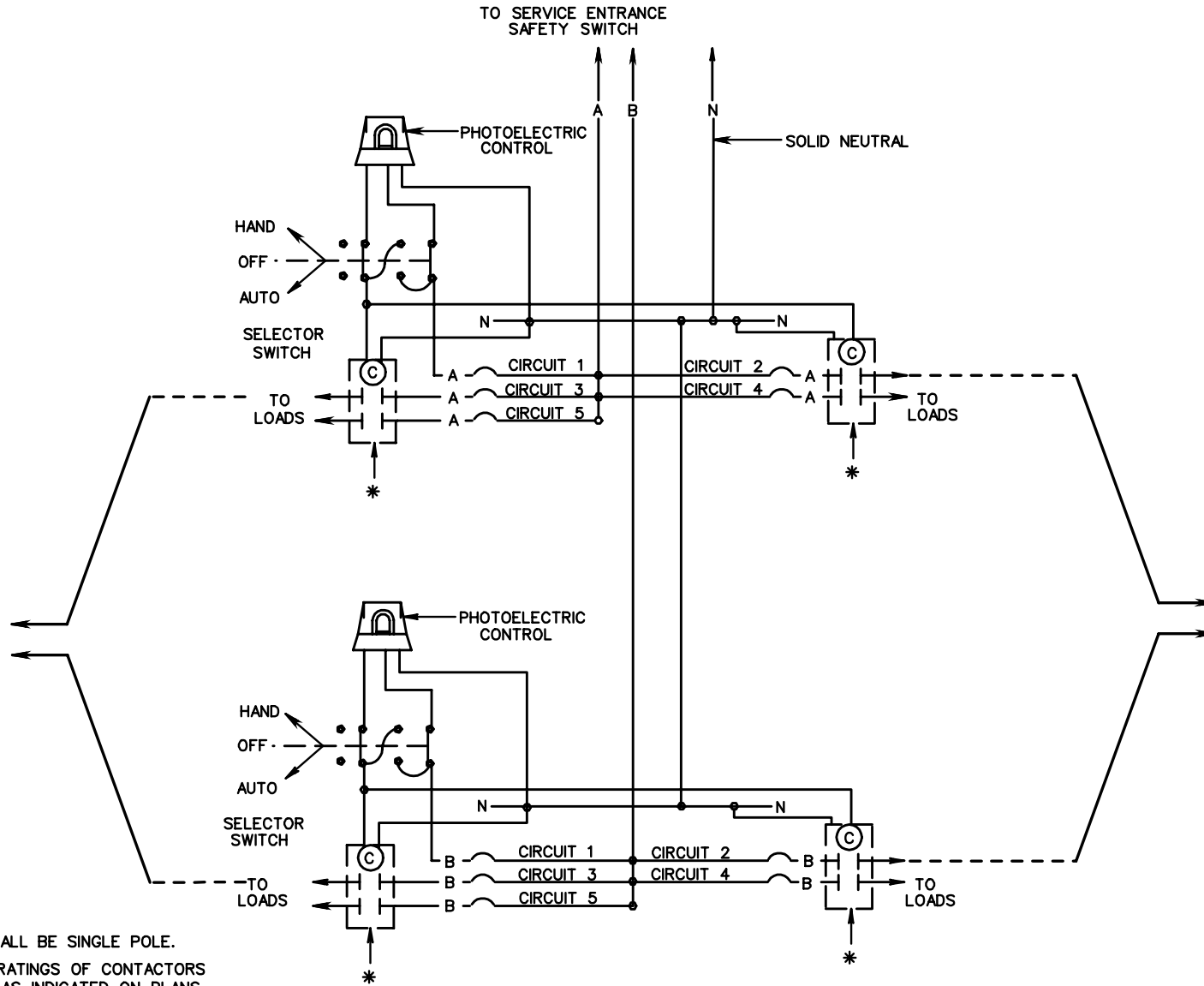


CCW-1



**TYPE G  
(SINGLE PHASE)**

**NOTES:**

ALL CIRCUIT BREAKERS SHALL BE SINGLE POLE.  
VOLTAGE AND AMPERAGE RATINGS OF CONTACTORS  
AND BREAKERS SHALL BE AS INDICATED ON PLANS.

NUMBER OF CIRCUITS SHOWN ARE TYPICAL. EXACT  
NUMBER REQUIRED SHALL BE AS INDICATED ON THE PLANS.

\* CONTACTOR SHALL BE 2 POLES FOR SINGLE  
PHASE AND 3 POLES FOR THREE PHASE SERVICES.

NUMBER OF CONTACTORS SHALL BE AS REQUIRED TO  
HANDLE THE NUMBER OF CIRCUITS ACTUALLY BEING UTILIZED.



ROAD AND BRIDGE STANDARDS

SHEET 3 OF 4 REVISION DATE

1314.12

**CONTROL CENTER WIRING  
DETAILS**

VIRGINIA DEPARTMENT OF TRANSPORTATION

SPECIFICATION  
REFERENCE

700  
705