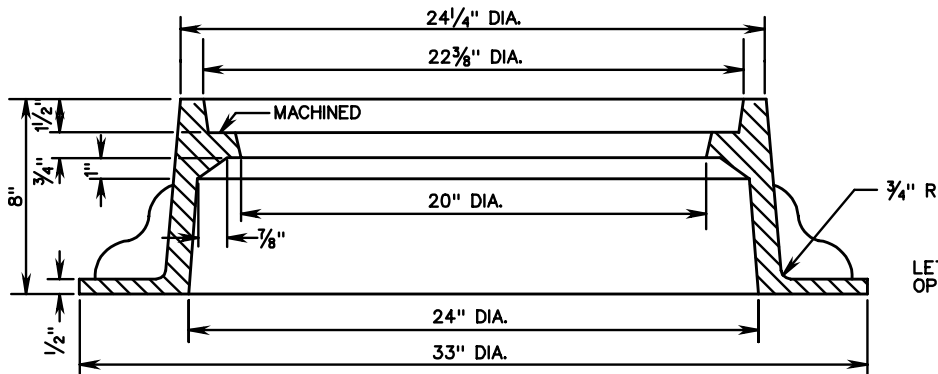
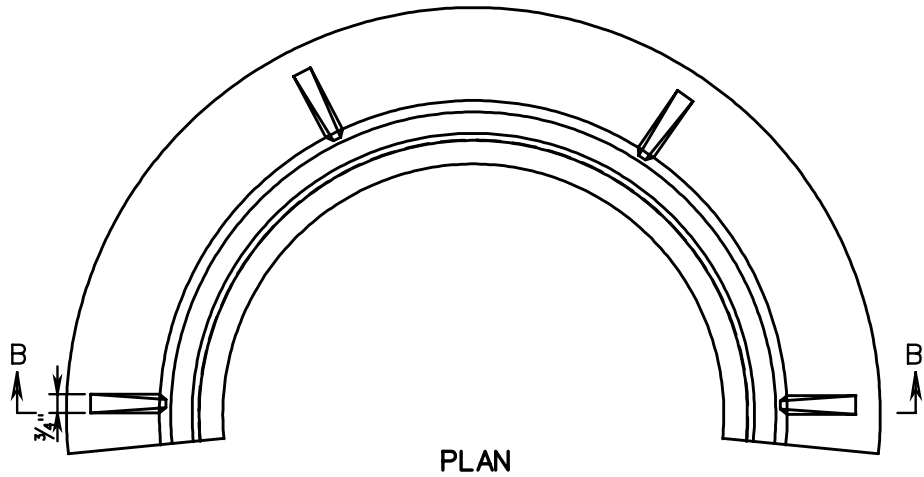
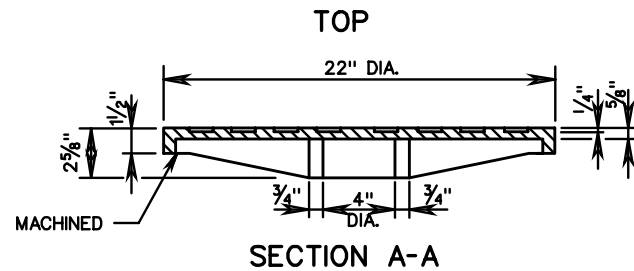
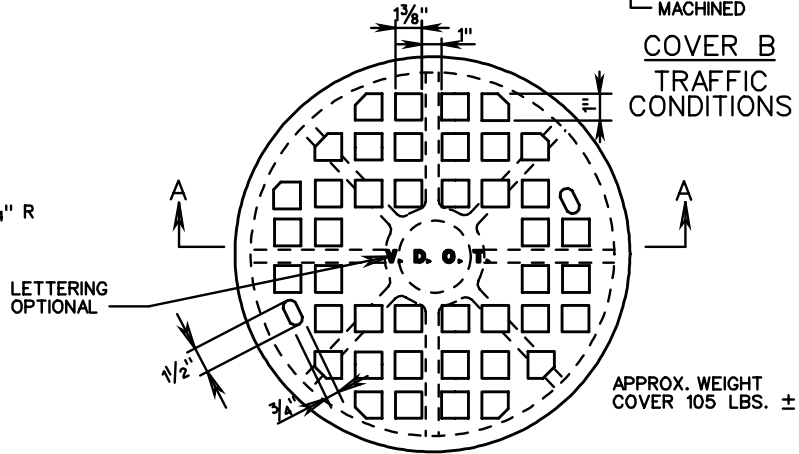
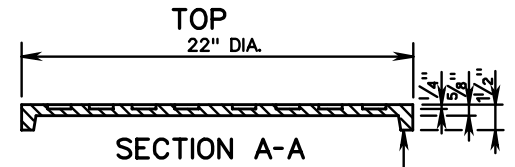
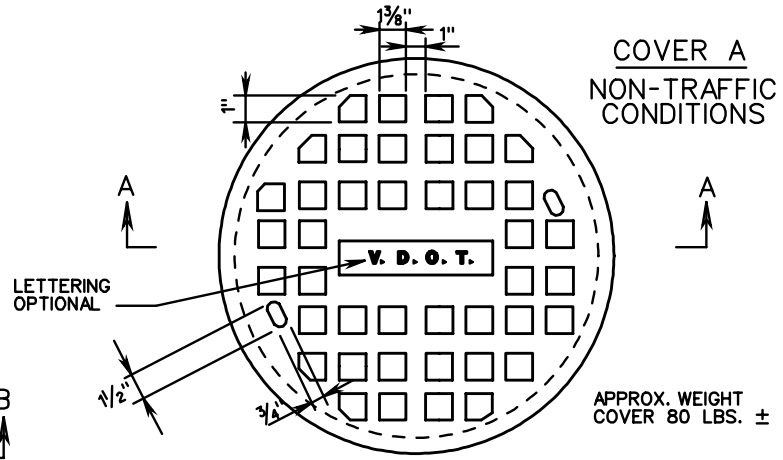


MH-1



EITHER COVER A OR B MAY BE USED WITH FRAME.
APPROX. WEIGHT COVER 170 LBS. ±



ROAD AND BRIDGE STANDARDS

SHEET 4 OF 5

REVISION DATE

106.04

STANDARD MANHOLE FRAME AND COVER

VIRGINIA DEPARTMENT OF TRANSPORTATION

SPECIFICATION
REFERENCE

224
302