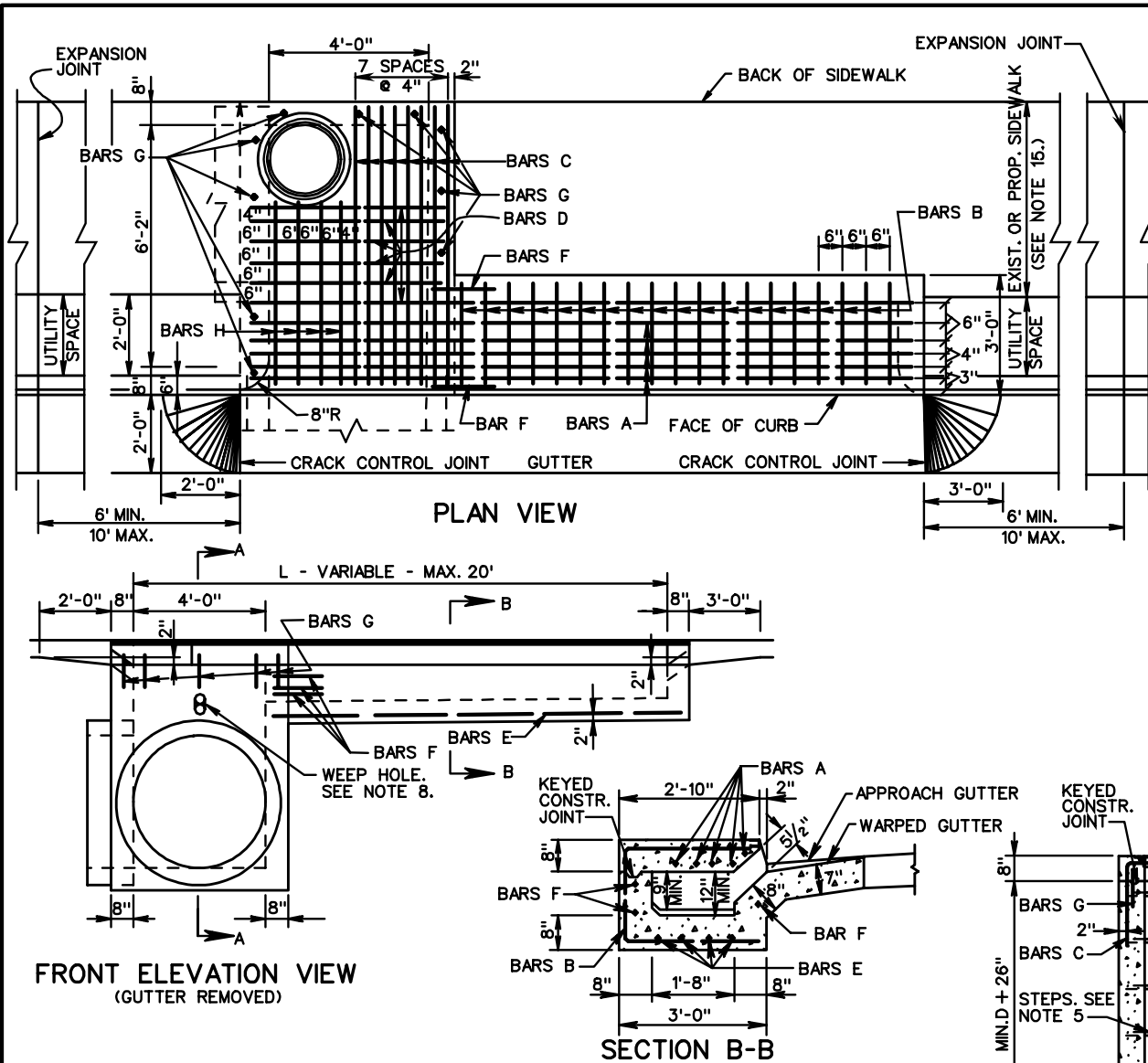
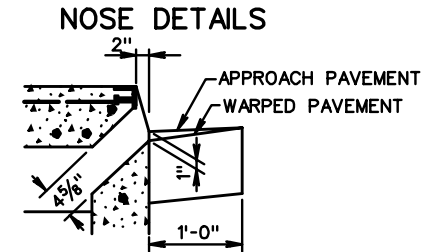
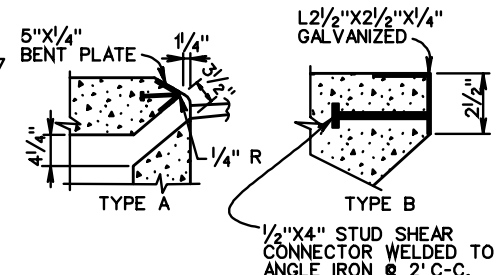


DI-4D, 4E, 4F

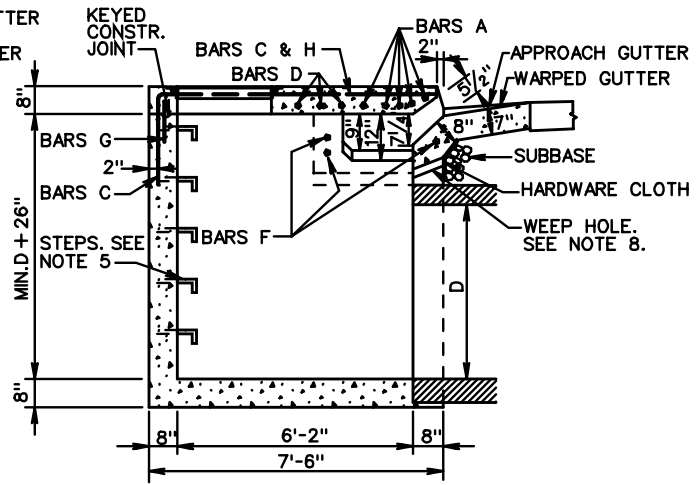


GALVANIZED PLATE TO BE BENT ON AN ANGLE OF 68° 30' & IS TO BE ANCHORED WITH 1/2" X 4" STUD SHEAR CONN. WELDED TO BENT PLATE AT 2' C-C.

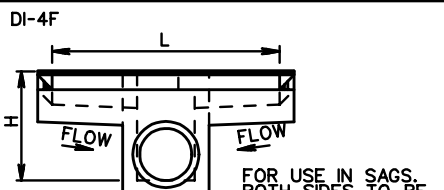
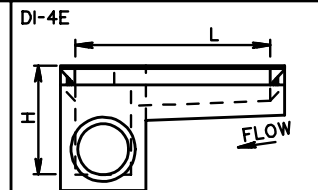
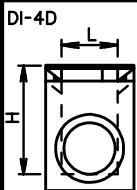
TYPE A NOSE DETAIL SHALL BE USED WITH CG-3 AND CG-7 STANDARDS. TYPE B NOSE DETAIL SHALL BE USED WITH CG-2 AND CG-6 STANDARDS.



DETAIL WHEN USED ADJACENT TO CURB WITHOUT GUTTER



SECTION A-A



SPECIFICATION REFERENCE
233 302

STANDARD CURB DROP INLET

36" - 48" PIPE: MAXIMUM DEPTH (H) - 8' (WITH UTILITY SPACE)
 54" - 60" MAX. PIPE: MAX. (H) - 8' (WITHOUT UTILITY SPACE)
 VIRGINIA DEPARTMENT OF TRANSPORTATION

VDOT ROAD AND BRIDGE STANDARDS	
REVISION DATE	SHEET 1 OF 2
	104.18