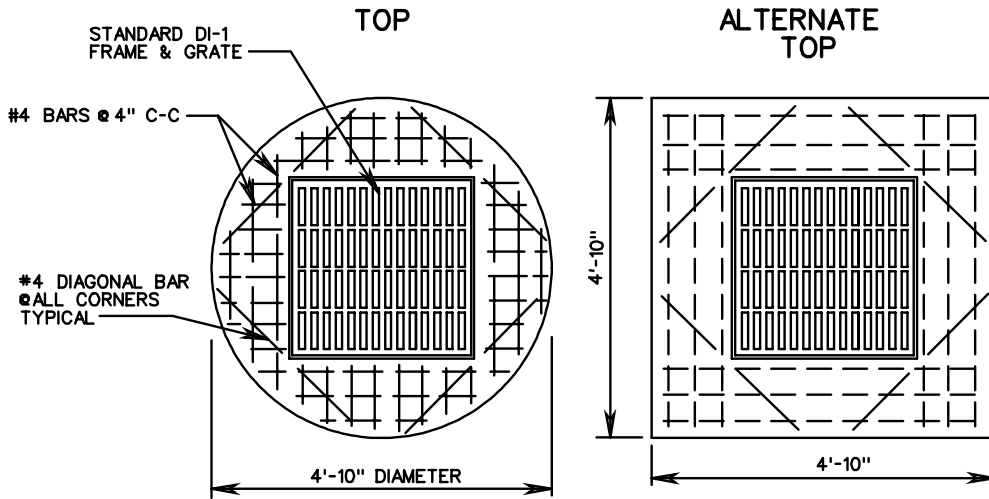
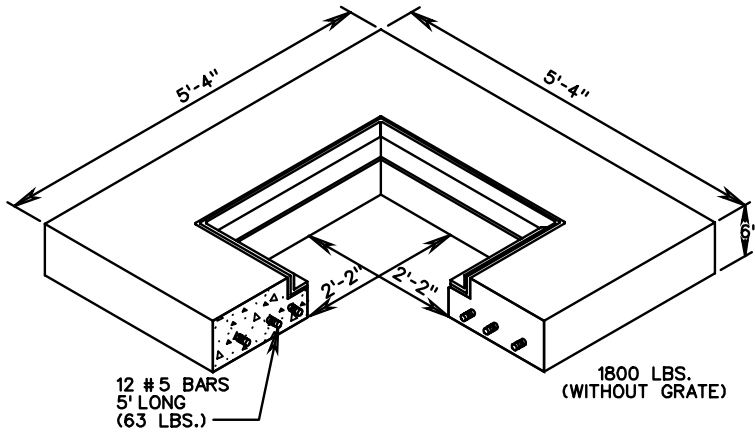


T-DI-1



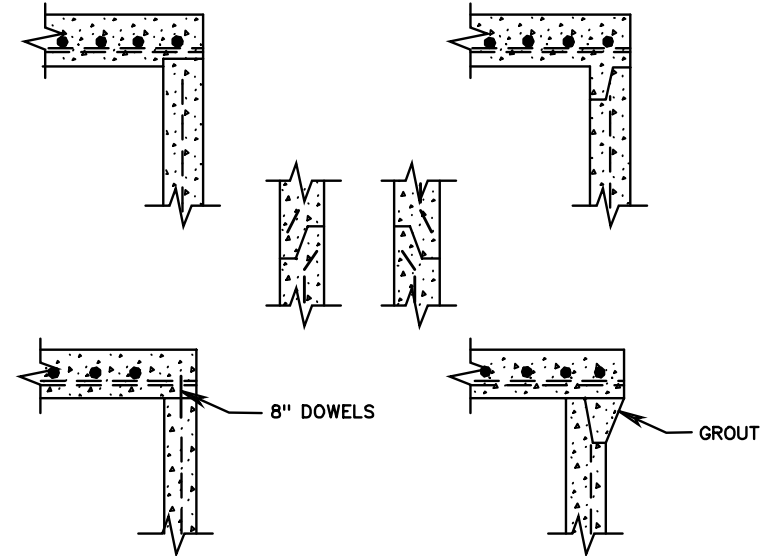
| PIPE SIZE | H DIMENSION                        |             |
|-----------|------------------------------------|-------------|
|           | CONCRETE                           | CORR. METAL |
| 12"       | 2'-6"                              | 2'-5"       |
| 15"       | 2'-9 <sup>1</sup> / <sub>4</sub> " | 2'-8"       |
| 18"       | 3'-0 <sup>1</sup> / <sub>2</sub> " | 2'-11"      |
| 21"       | 3'-3 <sup>3</sup> / <sub>4</sub> " | 3'-2"       |
| 24"       | 3'-7"                              | 3'-5"       |

DI-1, 1A PC



**NOTES:**

1. SEE GENERAL NOTES PRECAST FOR ADDITIONAL DETAILS.
2. CONCRETE TO BE 4000 PSIMINIMUM.
3. REINFORCING STEEL IN ACCORDANCE WITH ASTM C-478, ASTM A-497 (WIRE FABRIC) AND ASTM A-615 (REINFORCING BARS).
4. CONCRETE COVER AND GRATE ARE TO BE FURNISHED AS A SINGLE UNIT.
5. SEE STANDARD DI-1, 1A FOR DETAILS OF FRAME AND GRATE.
6. DIMENSIONS SHOWN ARE MINIMUM. ACTUAL DIMENSIONS MAY VARY WITH MANUFACTURER.



**NOTES:**

1. TONGUE AND GROOVE JOINT TO BE OF FABRICATOR'S DESIGN MEETING THE APPROVAL OF THE ENGINEER. JOINTS ARE TO BE SEALED WITH MORTAR, OR O-RING GASKETS OR BUTYL RUBBER.
2. ALTERNATE JOINT DETAILS APPLY TO ALL PRECAST UNITS.

**ALTERNATE JOINT DETAILS**



ROAD AND BRIDGE STANDARDS

**STANDARD PRECAST TOP UNITS**

SPECIFICATION REFERENCE

SHEET 1 OF 1

REVISION DATE

VIRGINIA DEPARTMENT OF TRANSPORTATION

103.03

105  
233  
302