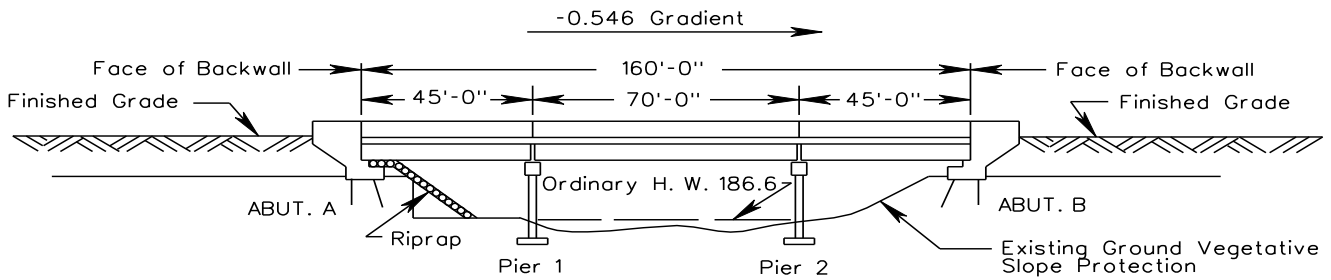
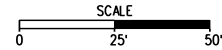


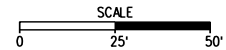
(See Interim Standard Causeway)

7 lines of 12" Pipes  
(3' +/- C. C.) or  
approved equal.

PLAN



ELEVATION



FILL BELOW ORDINARY HIGH WATER		
	Cu. Yds.	Sq. Ft.
RIPRAP	23	280
CAUSEWAYS	30	400
* CAUSEWAY IS OPTIONAL		
EXCAVATION BELOW ORDINARY HIGH WATER		
	Cu. Yds.	Sq. Ft.
RIPRAP	23	280
* CAUSEWAYS	30	400
EXISTING STRUCTURE	37	1000

PROPOSED BRIDGE ON RTE. 604  
OVER FLAT CREEK  
0.4 MI. N. INT. RTE. 632  
COUNTY OF AMELIA  
STATE OF VIRGINIA  
APPLICATION BY: VA. DEPT. OF TRANS.

SHEET OF

FIGURE C-4-4 PROPOSED BRIDGE PLAN-PROFILE SKETCH