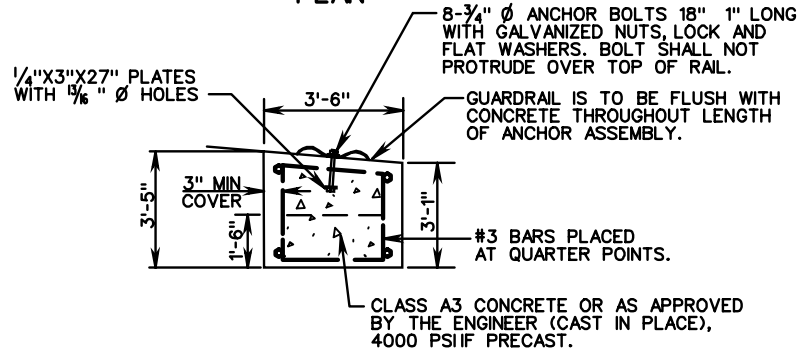
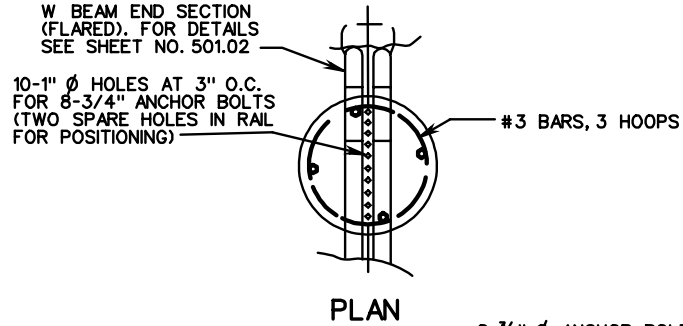
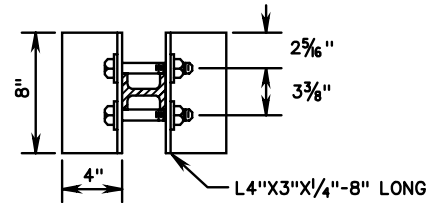


SHOP BENDING AND TWISTING REQUIRED TO MAKE THE ANCHOR TREATMENT.



**DETAIL-A
CONC. ANCHOR
ASSEMBLY**

1/8" Ø HOLES FOR 3/4" BOLTS 4 1/2" LONG WITH NUTS AND WASHERS. BOLTS TORQUED TO 100 + 20 FT. LBS. AFTER POST IS DRIVEN.



**GR-8 TYPE II TERMINAL TREATMENT
(RUN-OFF ANCHORAGE)**

STANDARD W BEAM GUARDRAIL (WEAK POST SYSTEM)