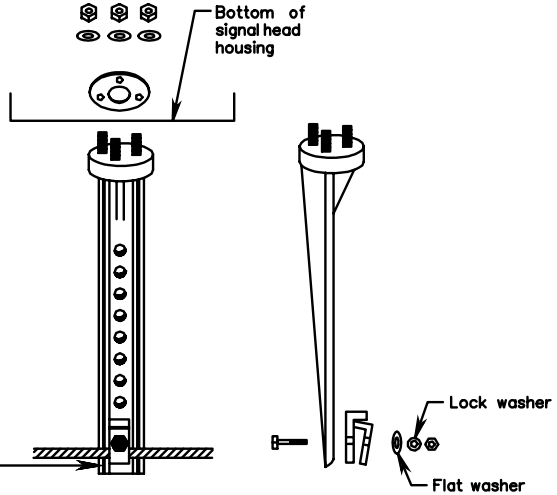
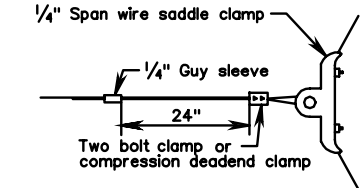


Cut off excess tether stem 3/4" below clamp.

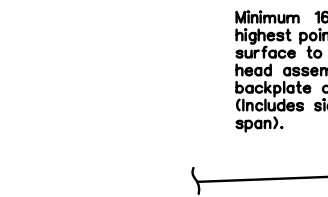


ADJUSTABLE TETHER CLAMP

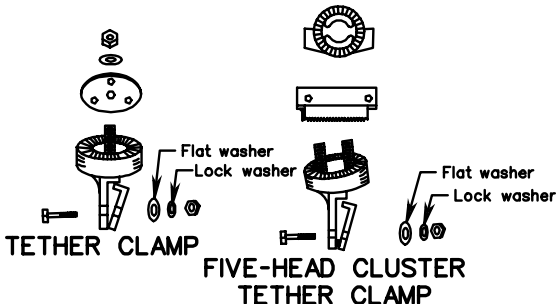
**POLE ATTACHMENT**



**BRIDLE SPAN ATTACHMENT**



Minimum 16' clearance from highest point of the pavement surface to lowest point of signal head assembly including backplate and tether clamp (Includes signalheads on bridle span).



TETHER CLAMP

FIVE-HEAD CLUSTER TETHER CLAMP

**TETHER WIRE DETAILS**