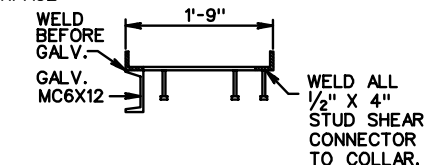
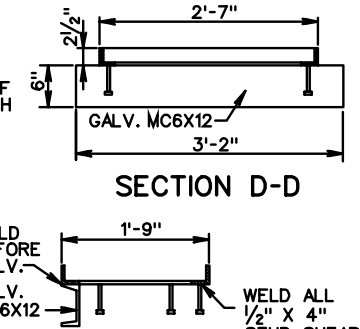
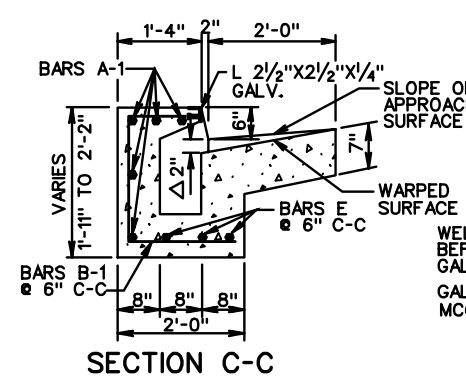
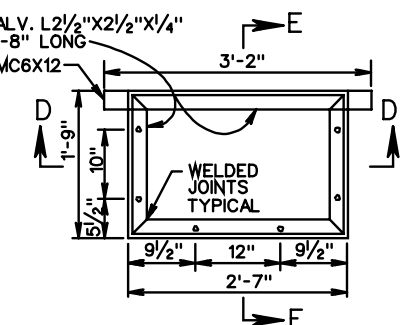
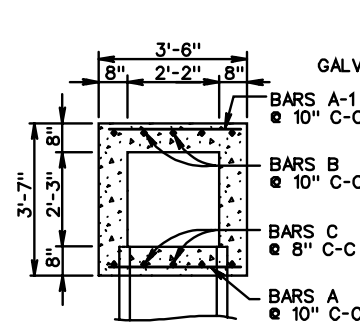
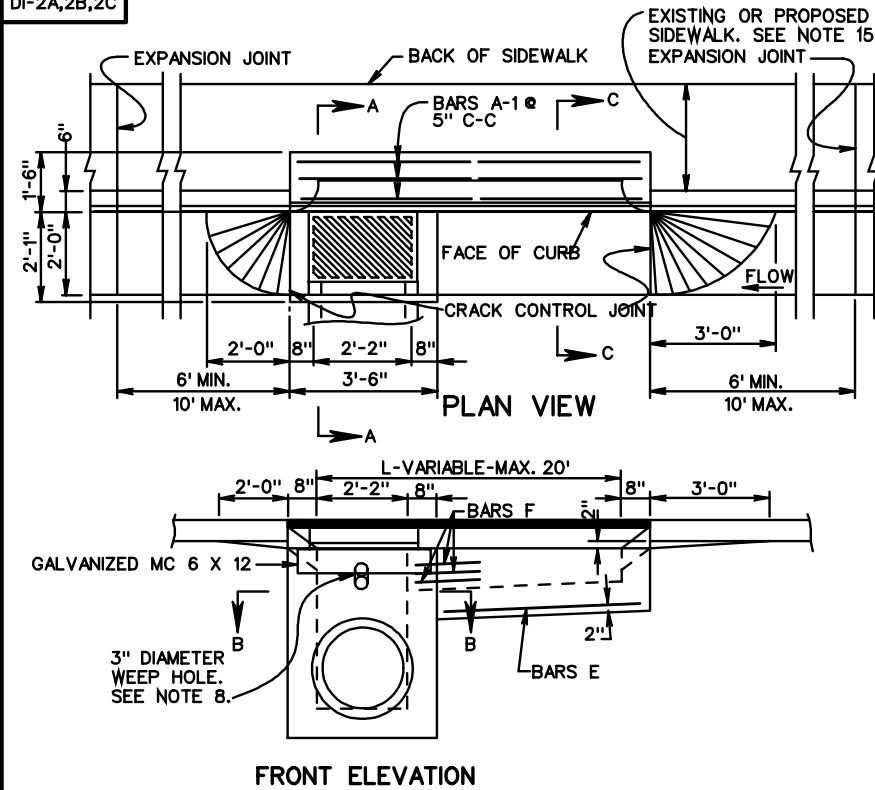


DI-2A,2B,2C



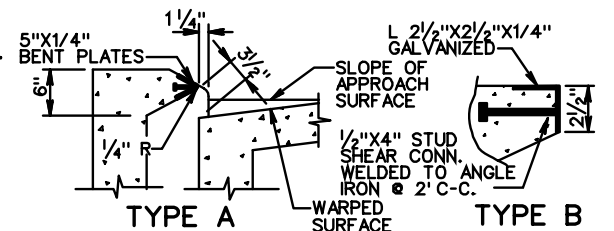
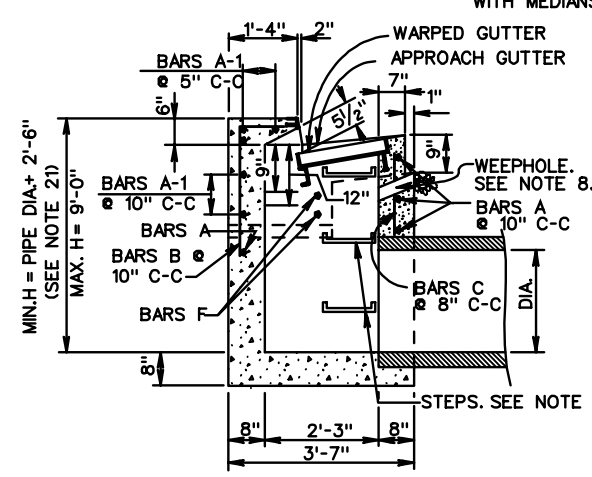
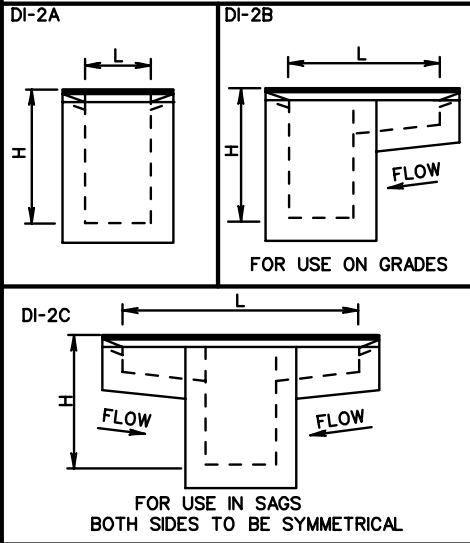
WARPED SURFACE

WELD BEFORE GALV.

GALV. MC6X12

WELD ALL 1/2" X 4" STUD SHEAR CONNECTOR TO COLLAR.

Δ DECREASE TO 1" WHEN INLET IS USED WITH MEDIANS.



NOSE DETAILS

TYPE A NOSE DETAIL SHALL BE USED WITH CG-7 STANDARD.

TYPE B NOSE DETAIL SHALL BE USED WITH CG-6 STANDARD.

GALVANIZED PLATE FOR TYPE A TO BE BENT ON AN ANGLE OF 54° AND IS TO BE ANCHORED WITH 1/2" X 4" STUD SHEAR CONNECTORS WELDED TO BENT PLATE AT 2' C-C.

SHEET 1 OF 2

STANDARD CURB DROP INLET

12" - 24" PIPE: MAXIMUM DEPTH (H) = 9'

REV. 01/04.
104.03

VIRGINIA DEPARTMENT OF TRANSPORTATION

SPECIFICATION REFERENCE
233
302