

SURVEYED BY \_\_\_\_\_  
 SUPERVISED BY \_\_\_\_\_  
 DESIGNED BY \_\_\_\_\_

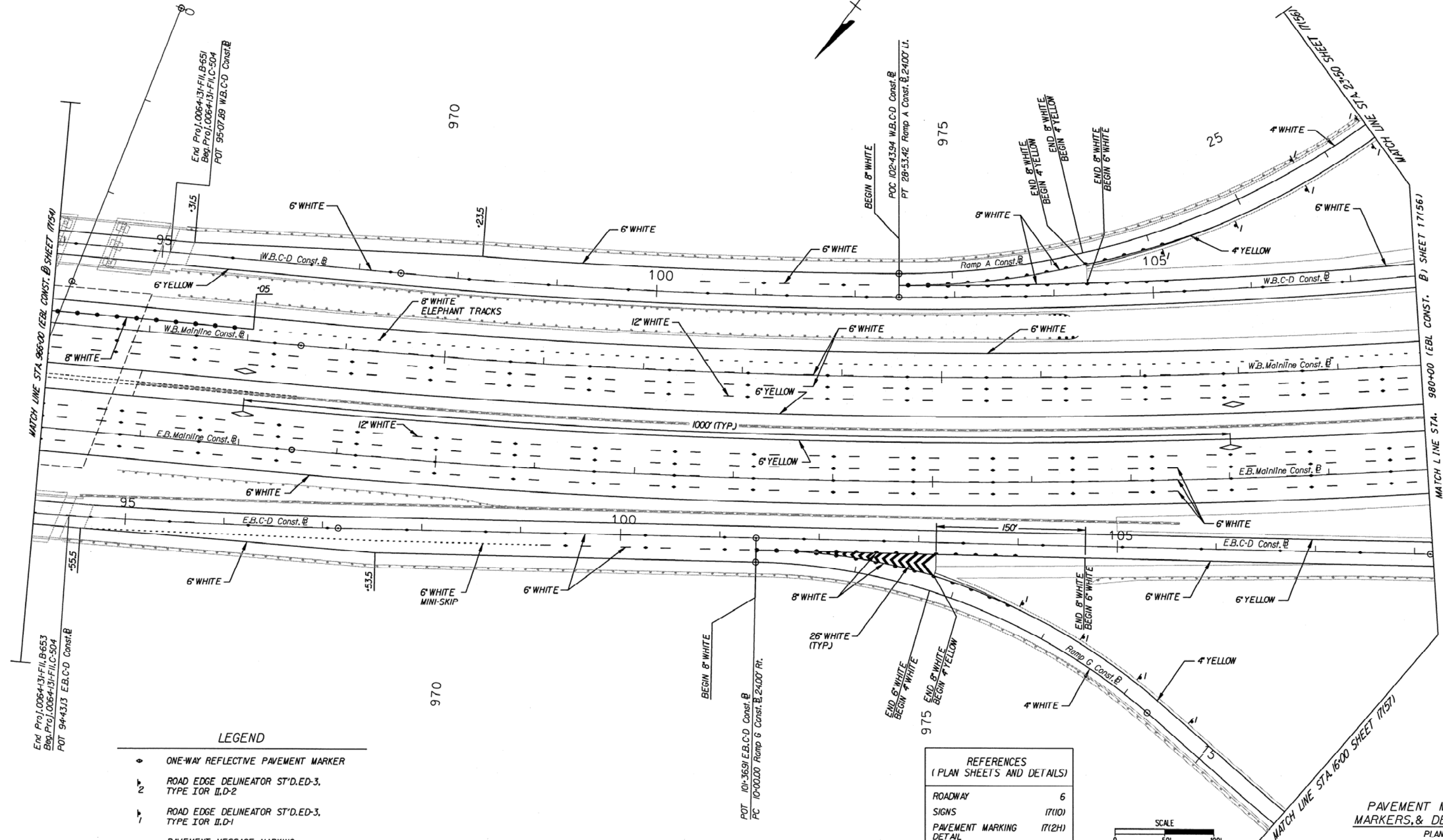
# PROPOSED PAVEMENT MARKING PLAN SHEET

DESIGN FEATURES RELATING TO CONSTRUCTION  
 OR TO REGULATION AND CONTROL OF TRAFFIC  
 MAY BE SUBJECT TO CHANGE AS DEEMED  
 NECESSARY BY THE DEPARTMENT

REVISED	FHWA REGION	STATE	FEDERAL AID PROJECT	ROUTE	STATE PROJECT	SHEET NO.

Section III - Marking, Markers and Delineation

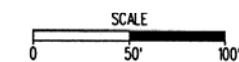
Appendix IIIA-3



### LEGEND

- ONE-WAY REFLECTIVE PAVEMENT MARKER
- ▼ ROAD EDGE DELINEATOR ST'D.ED-3, TYPE IOR II,D-2
- ▼ ROAD EDGE DELINEATOR ST'D.ED-3, TYPE IOR II,D-1
- ◇ PAVEMENT MESSAGE MARKING H.O.V. DIAMOND
- PAVEMENT MESSAGE MARKING WRONG WAY ARROW

REFERENCES (PLAN SHEETS AND DETAILS)	
ROADWAY	6
SIGNS	17(10)
PAVEMENT MARKING DETAIL	17(2H)



PAVEMENT MARKINGS,  
 MARKERS, & DELINEATORS  
 PLAN

PLAN NO.	PROJECT	FILE NO.	SHEET NO.
A			