

GENERAL NOTE

Capacity: HS20-44 Loading and Alternate Military Loading.

Specifications:

Construction - Va. Department of Transportation Road and Bridge Specifications, 1991.

Design - AASHTO Standard Specifications for Highway Bridges, 1983, including Interim Specifications, 1984, 1985 and VDOT Modifications, using Load Factor Design.

All concrete shall be Class A4.

Deformed reinforcing bars shall conform to ASTM A615, Grade 60. All reinforcing bar dimensions on the detailed drawings are to centers of bars except where otherwise noted and are subject to fabrication and construction tolerances.

Construction joints shall be constructed and bonded in accordance with the current Road and Bridge Specifications.

Barrels more than 35' in length shall be poured in sections by providing vertical construction joints, not exceeding 25' between joints nor more than 30' from ends of barrels.

\*\*Bars BH1 & BH3 shall have a pin diameter of 24 bar diameters.

Dimensions on bar diagrams are out-to-out of bars. Bars are straight and #4 in size unless otherwise shown. BL2 shall be #3 in size.

The number of BL1 & BL2 bars shown in the table is the number of longitudinal bars shown in the Typical Section and may not equal the total number of bars required. BL1 & BL2 shall have a lap of 30 bar diameters at splices. At construction joints, first placed bars shall project 30 bar diameters beyond the joint. Estimated QUAN./LF shown for reinforcing steel does not include quantity for laps of BL1 & BL2 bars. The additional weight per longitudinal lap is shown in the table.

The centers of main reinforcing bars shall be 2" from the face of the concrete.

When concrete protective coating is required, all steel shall be epoxy-coated. All reinforcing steel for culverts under 0 to 2 foot fills shall be epoxy-coated.

At the Contractor's option, BVI bars may be spliced at the permissible construction joint in order to facilitate construction. No additional compensation shall be provided for the increase in reinforcing steel quantity due to the splices.

Headwall quantities shown assume wingwalls are to be built at a 45° angle to the headwall.

The designs are applicable to the fill height and other conditions indicated. Any change in the conditions invalidates these designs.

Wingwalls referenced by letter apply when the acceptable foundation level is the same for both box and wings. If foundation levels are different, the height of the wingwall shall be adjusted by selection of another lettered wingwall of appropriate height. For wingwall details, refer to standard series BCW for the appropriate fill slope.

For details of extending existing boxes, refer to Standard BCE-01.

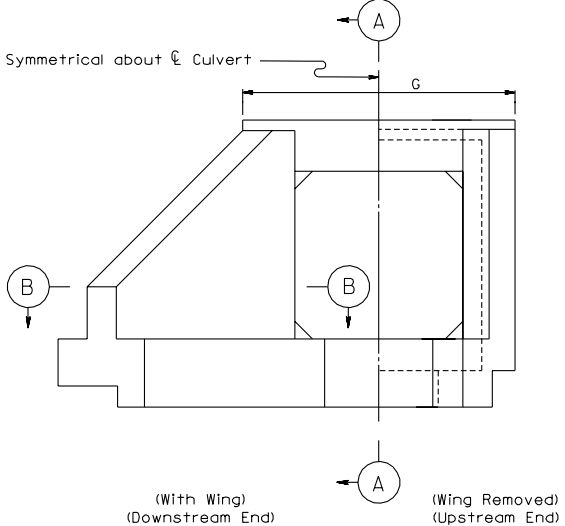
For modification of details for skewed culverts, see the Skewed Box Details included in the road plans.

This standard shall be used with the BCB standard series.

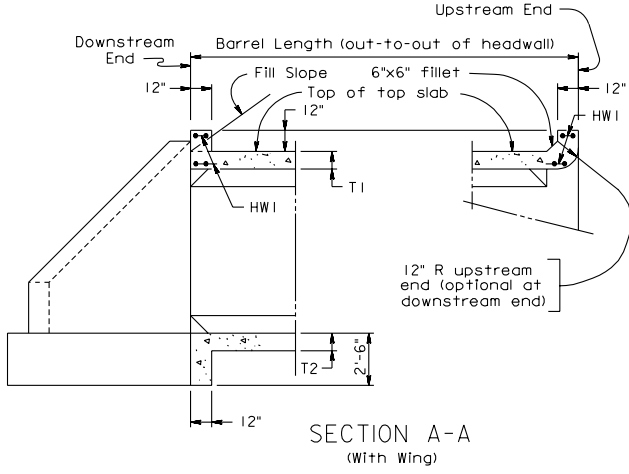
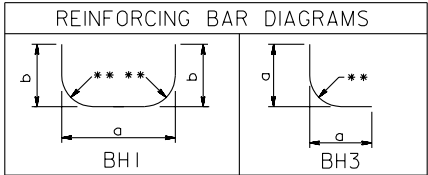
OVERSIZE BOX CULVERTS  
STANDARD DETAILS

VIRGINIA DEPARTMENT OF TRANSPORTATION

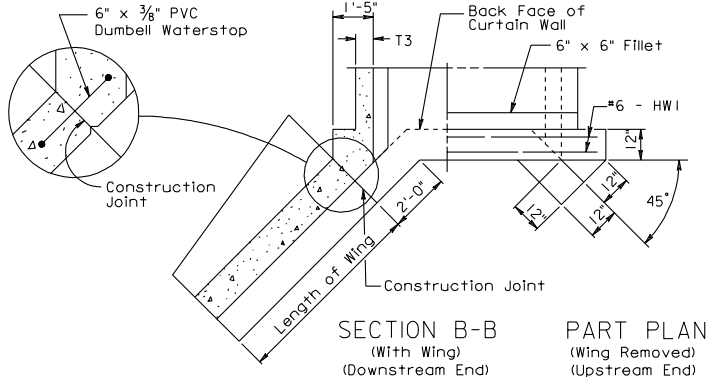
STRUCTURE  
AND  
BRIDGE  
DIVISION



END ELEVATION



SECTION A-A  
(With Wing)



SECTION B-B  
(With Wing)  
(Downstream End)

PART PLAN  
(Wing Removed)  
(Upstream End)

DIMENSIONS						REINFORCING STEEL																					
SPAN	HGHT	T1	T2	T3		BH1						BH2			BH3			BV1			NO. BL1 BARS	NO. BL2 BARS					
(FT.)	(FT.)	TOP SLAB (IN.)	BOTTOM SLAB (IN.)	WALL (IN.)	A	B	C	D	E	F	SIZE	SPACING C-C	a	b	LENGTH	SIZE	SPACING C-C	LENGTH	SIZE	SPACING C-C			a	LENGTH	SIZE	SPACING C-C	LENGTH
12	14	10 3/4"	10 3/4"	8"	11	11'- 0"	22	11'- 0"	12	12'- 0"	5	7"	13'- 0"	8'- 4 3/4"	29'- 2"	8	7"	13'- 0"	4	7"	3'- 10 3/4"	7'- 6"	4	8 1/2"	15'- 5"	63	52
12	16	11 3/4"	11 3/4"	8 1/4"	11	11'- 0"	22	11'- 0"	14	14'- 0"	6	6"	13'- 1/2"	9'- 5 3/4"	31'- 2"	8	6"	13'- 0"	--	---	-----	-----	4	5 1/2"	17'- 8"	63	60
14	8	10 3/4"	10 3/4"	8"	13	13'- 0"	26	13'- 0"	6	6'- 0"	5	7"	15'- 0"	5'- 4 3/4"	25'- 2"	7	7"	15'- 0"	4	7"	4'- 3 5/8"	8'- 4"	4	12"	9'- 5"	73	28
14	10	11"	11"	8"	13	13'- 0"	26	13'- 0"	8	8'- 0"	5	8 1/2"	15'- 0"	6'- 5"	27'- 2"	8	8 1/2"	15'- 0"	4	8 1/2"	4'- 3 5/8"	8'- 4"	4	12"	11'- 6"	73	36
14	12	11"	11"	8"	13	13'- 0"	26	13'- 0"	10	10'- 0"	5	7 1/2"	15'- 0"	7'- 5"	29'- 2"	8	7 1/2"	15'- 0"	4	7 1/2"	4'- 3 5/8"	8'- 4"	4	12"	13'- 6"	73	44
14	14	11 1/2"	11 1/2"	8"	13	13'- 0"	26	13'- 0"	12	12'- 0"	6	6 1/2"	15'- 0"	8'- 5 1/2"	31'- 1"	8	6 1/2"	15'- 0"	--	---	-----	-----	4	10"	15'- 7"	73	52
14	16	12 1/2"	12 1/2"	8 1/4"	13	13'- 0"	26	13'- 0"	14	14'- 0"	6	5 1/2"	15'- 1/2"	9'- 6 1/2"	33'- 4"	8	5 1/2"	15'- 0"	--	---	-----	-----	5	9"	17'- 9"	73	60

SPAN	HGHT	REINFORCING STEEL (LBS./LONG. JT)	QUAN./LF		HEADWALLS									
			CONCRETE CLASS A4 (CY/LF)	REINFORCING STEEL (LBS./LF)	HEADWALL LENGTH	HW 1		INLET CONCRETE CL. A4 (CY)	INLET REINFORCING STEEL (LBS)	OUTLET CONCRETE CL. A4 (CY)	OUTLET REINFORCING STEEL (LBS)	WINGWALL		
						SIZE	LENGTH							
12	14	70.961	1.591	348.374	14'-10"	6	14'- 6"	2.927	87.116	2.961	87.116	X		
12	16	73.785	1.793	442.230	14'-10"	6	14'- 6"	3.064	87.116	3.097	87.116	BB		
14	8	70.839	1.431	305.160	16'-10"	6	16'- 6"	2.557	99.132	2.597	99.132	L		
14	10	73.663	1.554	302.186	16'-10"	6	16'- 6"	2.735	99.132	2.775	99.132	P		
14	12	76.487	1.649	344.477	16'-10"	6	16'- 6"	2.920	99.132	2.961	99.132	T		
14	14	79.311	1.790	413.560	16'-10"	6	16'- 6"	3.092	99.132	3.132	99.132	X		
14	16	82.135	2.004	513.929	16'-10"	6	16'- 6"	3.222	99.132	3.262	99.132	BB		

For Typical Section, notes and other details, refer to Standard BCB-DT.

DIMENSIONS						REINFORCING STEEL																					
SPAN	HGHT	T1	T2	T3		BH1						BH2			BH3			BV1			NO. BL1 BARS	NO. BL2 BARS					
(FT.)	(FT.)	TOP SLAB (IN.)	BOTTOM SLAB (IN.)	WALL (IN.)	A	B	C	D	E	F	SIZE	SPACING C-C	a	b	LENGTH	SIZE	SPACING C-C	LENGTH	SIZE	SPACING C-C			a	LENGTH	SIZE	SPACING C-C	LENGTH
12	14	11"	11"	8"	11	11'- 0"	11	11'- 0"	12	12'- 0"	5	7"	13'- 0"	8'- 5"	29'- 2"	8	7"	13'- 0"	4	7"	3'-10 <sup>3</sup> / <sub>4</sub> "	7'- 6"	4	8 <sup>1</sup> / <sub>2</sub> "	15'- 6"	52	52
12	16	12 <sup>1</sup> / <sub>4</sub> "	12 <sup>1</sup> / <sub>4</sub> "	8 <sup>1</sup> / <sub>4</sub> "	11	11'- 0"	11	11'- 0"	14	14'- 0"	6	6 <sup>1</sup> / <sub>2</sub> "	13'- 1/2"	9'- 6 <sup>1</sup> / <sub>4</sub> "	31'- 3"	8	6 <sup>1</sup> / <sub>2</sub> "	13'- 0"	4	6 <sup>1</sup> / <sub>2</sub> "	3'-11"	7'- 7"	5	7 <sup>1</sup> / <sub>2</sub> "	17'- 9"	52	60
14	8	10 <sup>1</sup> / <sub>4</sub> "	10 <sup>1</sup> / <sub>4</sub> "	8"	13	13'- 0"	13	13'- 0"	6	6'- 0"	5	6"	15'- 0"	5'- 4 <sup>1</sup> / <sub>4</sub> "	25'- 1"	7	6"	15'- 0"	--	--	-----	-----	4	7 <sup>1</sup> / <sub>2</sub> "	9'- 5"	60	28
14	10	10 <sup>1</sup> / <sub>4</sub> "	10 <sup>1</sup> / <sub>4</sub> "	8"	13	13'- 0"	13	13'- 0"	8	8'- 0"	6	7"	15'- 0"	6'- 4 <sup>1</sup> / <sub>4</sub> "	26'-11"	8	7"	15'- 0"	--	--	-----	-----	4	7 <sup>1</sup> / <sub>2</sub> "	11'- 5"	60	36
14	12	10 <sup>1</sup> / <sub>2</sub> "	10 <sup>1</sup> / <sub>2</sub> "	8"	13	13'- 0"	13	13'- 0"	10	10'- 0"	5	5 <sup>1</sup> / <sub>2</sub> "	15'- 0"	7'- 4 <sup>1</sup> / <sub>2</sub> "	29'- 1"	7	5 <sup>1</sup> / <sub>2</sub> "	15'- 0"	--	--	-----	-----	4	12"	13'- 5"	60	44
14	14	11 <sup>1</sup> / <sub>2</sub> "	11 <sup>1</sup> / <sub>2</sub> "	8"	13	13'- 0"	13	13'- 0"	12	12'- 0"	5	6 <sup>1</sup> / <sub>2</sub> "	15'- 0"	8'- 5 <sup>1</sup> / <sub>2</sub> "	31'- 3"	8	6 <sup>1</sup> / <sub>2</sub> "	15'- 0"	3	6 <sup>1</sup> / <sub>2</sub> "	4'- 3 <sup>5</sup> / <sub>8</sub> "	8'- 5"	4	12"	15'- 7"	60	52
14	16	12 <sup>1</sup> / <sub>2</sub> "	12 <sup>1</sup> / <sub>2</sub> "	8 <sup>1</sup> / <sub>2</sub> "	13	13'- 0"	13	13'- 0"	14	14'- 0"	6	6"	15'- 1"	9'- 6 <sup>1</sup> / <sub>2</sub> "	33'- 4"	8	6"	15'- 1"	--	--	-----	-----	4	6"	17'- 9"	60	60

SPAN	HGHT	REINFORCING STEEL (LBS./LONG. JT)	QUAN./LF		HEADWALLS									
			CONCRETE CLASS A4 (CY/LF)	REINFORCING STEEL (LBS/LF)	HEADWALL		HW 1		INLET CONCRETE CL. A4 (CY)	INLET REINFORCING STEEL (LBS)	OUTLET CONCRETE CL. A4 (CY)	OUTLET REINFORCING STEEL (LBS)	WINGWALL	
(FT.)	(FT.)			LENGTH	SIZE	LENGTH								
12	14	61.776	1.613	341.183	14'-10"	6	14'- 6"	2.922	87.116	2.956	87.116	X		
12	16	64.600	1.833	455.414	14'-10"	6	14'- 6"	3.053	87.116	3.086	87.116	BB		
14	8	59.984	1.384	298.025	16'-10"	6	16'- 6"	2.570	99.132	2.611	99.132	L		
14	10	62.808	1.479	353.948	16'-10"	6	16'- 6"	2.756	99.132	2.796	99.132	P		
14	12	65.632	1.602	340.704	16'-10"	6	16'- 6"	2.934	99.132	2.975	99.132	T		
14	14	68.456	1.793	372.044	16'-10"	6	16'- 6"	3.092	99.132	3.132	99.132	X		
14	16	71.280	2.035	471.425	16'-10"	6	16'- 6"	3.194	99.132	3.234	99.132	BB		

For Typical Section, notes and other details, refer to Standard BCB-DT.

DIMENSIONS						REINFORCING STEEL																					
SPAN	HGHT	T1	T2	T3		BH1						BH2			BH3			BV1			NO. BL1 BARS	NO. BL2 BARS					
(FT.)	(FT.)	TOP SLAB (IN.)	BOTTOM SLAB (IN.)	WALL (IN.)	A	B	C	D	E	F	SIZE	SPACING C-C	a	b	LENGTH	SIZE	SPACING C-C	LENGTH	SIZE	SPACING C-C			a	LENGTH	SIZE	SPACING C-C	LENGTH
12	14	11 1/2"	11 1/2"	8"	11	11'- 0"	11	11'- 0"	12	12'- 0"	5	6 1/2"	13'- 0"	8'- 5 1/2"	29'- 3"	8	6 1/2"	13'- 0"	4	6 1/2"	3'- 10 3/4"	7'- 6"	4	7 1/2"	15'- 7"	52	52
12	16	12"	12"	8 3/4"	11	11'- 0"	11	11'- 0"	14	14'- 0"	6	6"	13'- 1/2"	9'- 6"	31'- 4"	8	6"	13'- 1"	--	---	-----	-----	5	7 1/2"	17'- 8"	52	60
14	8	11 3/4"	11 3/4"	8"	13	13'- 0"	13	13'- 0"	6	6'- 0"	6	6 1/2"	15'- 0"	5'- 5 3/4"	25'- 2"	8	6 1/2"	15'- 0"	--	---	-----	-----	4	6"	9'- 8"	60	28
14	10	11 3/4"	11 3/4"	8"	13	13'- 0"	13	13'- 0"	8	8'- 0"	5	6"	15'- 0"	6'- 5 3/4"	27'- 4"	8	6"	15'- 0"	3	6"	4'- 3 5/8"	8'- 5"	4	6"	11'- 8"	60	36
14	12	12"	12"	8"	13	13'- 0"	13	13'- 0"	10	10'- 0"	5	6"	15'- 0"	7'- 6"	29'- 4"	8	6"	15'- 0"	3	6"	4'- 3 5/8"	8'- 5"	4	12"	13'- 8"	60	44
14	14	12 1/2"	12 1/2"	8"	13	13'- 0"	13	13'- 0"	12	12'- 0"	5	5 1/2"	15'- 0"	8'- 6 1/2"	31'- 5"	8	5 1/2"	15'- 0"	3	5 1/2"	4'- 3 5/8"	8'- 5"	4	11 1/2"	15'- 9"	60	52
14	16	12 3/4"	12 3/4"	8 1/2"	13	13'- 0"	13	13'- 0"	14	14'- 0"	6	5 1/2"	15'- 1"	9'- 6 3/4"	33'- 5"	8	5 1/2"	15'- 1"	--	---	-----	-----	4	5 1/2"	17'- 9"	60	60

SPAN	HGHT	REINFORCING STEEL (LBS./LONG. JT)	QUAN./LF		HEADWALLS							
			CONCRETE CLASS A4 (CY/LF)	REINFORCING STEEL (LBS./LF)	HEADWALL LENGTH	SIZE	HW I LENGTH	INLET CONCRETE CL. A4 (CY)	INLET REINFORCING STEEL (LBS)	OUTLET CONCRETE CL. A4 (CY)	OUTLET REINFORCING STEEL (LBS)	WINGWALL
12	14	61.776	1.652	365.400	14'-10"	6	14'- 6"	2.911	87.116	2.945	87.116	X
12	16	64.600	1.869	444.241	14'-10"	6	14'- 6"	3.003	87.116	3.036	87.116	BB
14	8	59.984	1.521	363.885	16'-10"	6	16'- 6"	2.529	99.132	2.569	99.132	L
14	10	62.808	1.619	384.341	16'-10"	6	16'- 6"	2.714	99.132	2.754	99.132	P
14	12	65.632	1.741	382.779	16'-10"	6	16'- 6"	2.893	99.132	2.933	99.132	T
14	14	68.456	1.884	426.957	16'-10"	6	16'- 6"	3.064	99.132	3.105	99.132	X
14	16	71.280	2.056	509.133	16'-10"	6	16'- 6"	3.187	99.132	3.227	99.132	BB

For Typical Section, notes and other details, refer to Standard BCB-DT.

DIMENSIONS						REINFORCING STEEL																					
SPAN	HGHT	T1	T2	T3		BH1						BH2			BH3			BV1			NO. BL1 BARS	NO. BL2 BARS					
(FT.)	(FT.)	TOP SLAB (IN.)	BOTTOM SLAB (IN.)	WALL (IN.)	A	B	C	D	E	F	SIZE	SPACING C-C	a	b	LENGTH	SIZE	SPACING C-C	LENGTH	SIZE	SPACING C-C			a	LENGTH	SIZE	SPACING C-C	LENGTH
12	14	12 1/2"	12 1/2"	8"	11	11'- 0"	11	11'- 0"	12	12'- 0"	5	6"	13'- 0"	8'- 6 1/2"	29'- 5"	8	6"	13'- 0"	4	6"	3'- 10 3/4"	7'- 6"	4	6"	15'- 9"	52	52
12	16	13"	13"	8 3/4"	11	11'- 0"	11	11'- 0"	14	14'- 0"	5	6"	13'- 1 1/2"	9'- 7"	31'- 8"	8	6"	13'- 1"	4	6"	3'- 11 1/2"	7'- 8"	5	6"	17'- 10"	52	60
14	8	13 3/4"	13 3/4"	8"	13	13'- 0"	13	13'- 0"	6	6'- 0"	5	6"	15'- 0"	5'- 7 3/4"	25'- 8"	8	6"	15'- 0"	3	6"	4'- 3 5/8"	8'- 5"	4	6 1/2"	10'- 0"	60	28
14	10	14"	14"	8"	13	13'- 0"	13	13'- 0"	8	8'- 0"	5	5 1/2"	15'- 0"	6'- 8"	27'- 8"	8	5 1/2"	15'- 0"	--	---	-----	-----	4	9"	12'- 0"	60	36
14	12	14"	14"	8"	13	13'- 0"	13	13'- 0"	10	10'- 0"	5	5 1/2"	15'- 0"	7'- 8"	29'- 8"	8	5 1/2"	15'- 0"	3	5 1/2"	4'- 3 5/8"	8'- 5"	4	12"	14'- 0"	60	44
14	14	14 1/4"	14 1/4"	8"	13	13'- 0"	13	13'- 0"	12	12'- 0"	5	5"	15'- 0"	8'- 8 1/4"	31'- 9"	8	5"	15'- 0"	3	5"	4'- 3 5/8"	8'- 5"	5	10 1/2"	16'- 0"	60	52
14	16	14 3/4"	14 3/4"	9"	13	13'- 0"	13	13'- 0"	14	14'- 0"	6	5"	15'- 2"	9'- 8 3/4"	33'- 10"	8	5"	15'- 2"	--	---	-----	-----	5	7 1/2"	18'- 1"	60	60

SPAN	HGHT	REINFORCING STEEL (LBS./LONG. JT)	QUAN./LF		HEADWALLS									
			CONCRETE CLASS A4 (CY/LF)	REINFORCING STEEL (LBS./LF)	HEADWALL LENGTH	HW 1		INLET CONCRETE CL. A4 (CY)	INLET REINFORCING STEEL (LBS)	OUTLET CONCRETE CL. A4 (CY)	OUTLET REINFORCING STEEL (LBS)	WINGWALL		
						SIZE	LENGTH							
12	14	61.776	1.732	398.018	14'-10"	6	14'- 6"	2.890	87.116	2.923	87.116	X		
12	16	64.600	1.952	444.511	14'-10"	6	14'- 6"	2.981	87.116	3.014	87.116	BB		
14	8	59.984	1.710	367.871	16'-10"	6	16'- 6"	2.473	99.132	2.513	99.132	L		
14	10	62.808	1.832	375.674	16'-10"	6	16'- 6"	2.652	99.132	2.692	99.132	P		
14	12	65.632	1.928	412.732	16'-10"	6	16'- 6"	2.837	99.132	2.877	99.132	T		
14	14	68.456	2.046	479.350	16'-10"	6	16'- 6"	3.016	99.132	3.056	99.132	X		
14	16	71.280	2.299	561.296	16'-10"	6	16'- 6"	3.074	99.132	3.114	99.132	BB		

For Typical Section, notes and other details, refer to Standard BCB-DT.

DIMENSIONS						REINFORCING STEEL																					
SPAN	HGHT	T1	T2	T3		BH1						BH2			BH3			BV1			NO. BL1 BARS	NO. BL2 BARS					
(FT.)	(FT.)	TOP SLAB (IN.)	BOTTOM SLAB (IN.)	WALL (IN.)	A	B	C	D	E	F	SIZE	SPACING C-C	a	b	LENGTH	SIZE	SPACING C-C	LENGTH	SIZE	SPACING C-C			a	LENGTH	SIZE	SPACING C-C	LENGTH
12	14	15"	15"	8 1/4"	11	11'- 0"	11	11'- 0"	12	12'- 0"	6	6"	13'- 1/2"	8'- 9"	29'- 9"	8	6"	13'- 0"	--	---	-----	-----	6	9 1/2"	16'- 2"	52	52
12	16	15 1/4"	15 1/4"	9 3/4"	11	11'- 0"	11	11'- 0"	14	14'- 0"	6	5/2"	13'- 3 1/2"	9'- 9 1/4"	32'- 0"	8	5/2"	13'- 3"	3	5/2"	4'- 0 1/2"	7'- 11"	7	1 1/2"	18'- 3"	52	60
14	8	16 3/4"	16 3/4"	8"	13	13'- 0"	13	13'- 0"	6	6'- 0"	4	5/2"	15'- 0"	5'- 10 3/4"	26'- 3"	8	5/2"	15'- 0"	4	5/2"	4'- 3 5/8"	8'- 4"	4	1 1/2"	10'- 6"	60	28
14	10	16 3/4"	16 3/4"	8"	13	13'- 0"	13	13'- 0"	8	8'- 0"	5	5"	15'- 0"	6'- 10 3/4"	28'- 2"	8	5"	15'- 0"	--	---	-----	-----	4	12"	12'- 6"	60	36
14	12	16 3/4"	16 3/4"	8"	13	13'- 0"	13	13'- 0"	10	10'- 0"	5	5"	15'- 0"	7'- 10 3/4"	30'- 2"	8	5"	15'- 0"	--	---	-----	-----	4	10"	14'- 6"	60	44
14	14	16 3/4"	16 3/4"	8 1/2"	13	13'- 0"	13	13'- 0"	12	12'- 0"	5	5"	15'- 1"	8'- 10 3/4"	32'- 3"	8	5"	15'- 1"	4	5"	4'- 4 1/8"	8'- 5"	6	1 1/2"	16'- 6"	60	52
14	16	17"	17"	9 1/2"	13	13'- 0"	13	13'- 0"	14	14'- 0"	6	5"	15'- 3"	9'- 11"	34'- 3"	8	5"	15'- 3"	--	---	-----	-----	6	9"	18'- 6"	60	60

SPAN	HGHT	REINFORCING STEEL (LBS/LONG. JT)	QUAN./LF	HEADWALLS								
				G		HW1		INLET CONCRETE CL. A4 (CY)	INLET REINFORCING STEEL (LBS)	OUTLET CONCRETE CL. A4 (CY)	OUTLET REINFORCING STEEL (LBS)	WINGWALL
(FT.)	(FT.)	CONCRETE CLASS A4 (CY/LF)	REINFORCING STEEL (LBS/LF)	HEADWALL LENGTH	SIZE	LENGTH	INLET CONCRETE CL. A4 (CY)					
12	14	61.776	1.960	433.211	14'-10"	6	14'- 6"	2.810	87.116	2.844	87.116	X
12	16	64.600	2.248	525.232	14'-10"	6	14'- 6"	2.835	87.116	2.868	87.116	CC
14	8	59.984	1.994	365.773	16'-10"	6	16'- 6"	2.408	99.132	2.449	99.132	M
14	10	62.808	2.090	403.570	16'-10"	6	16'- 6"	2.594	99.132	2.634	99.132	Q
14	12	65.632	2.188	423.137	16'-10"	6	16'- 6"	2.779	99.132	2.820	99.132	U
14	14	68.456	2.331	520.092	16'-10"	6	16'- 6"	2.913	99.132	2.953	99.132	Y
14	16	71.280	2.571	579.111	16'-10"	6	16'- 6"	2.970	99.132	3.009	99.132	CC

For Typical Section, notes and other details, refer to Standard BCB-DT.

DIMENSIONS						REINFORCING STEEL																					
SPAN	HGHT	T1	T2	T3		BH1						BH2			BH3			BV1			NO. BL1 BARS	NO. BL2 BARS					
(FT.)	(FT.)	TOP SLAB (IN.)	BOTTOM SLAB (IN.)	WALL (IN.)	A	B	C	D	E	F	SIZE	SPACING C-C	a	b	LENGTH	SIZE	SPACING C-C	LENGTH	SIZE	SPACING C-C	a	LENGTH	SIZE	SPACING C-C	LENGTH		
12	14	17"	17"	9 1/2"	11	11'- 0"	11	11'- 0"	12	12'- 0"	6	5/2"	13'- 3"	8'- 11"	30'- 3"	8	5/2"	13'- 3"	--	---	-----	-----	4	4 1/2"	16'- 6"	52	52
12	16	17 1/4"	17 1/4"	10 1/4"	11	11'- 0"	11	11'- 0"	14	14'- 0"	7	5/2"	13'- 4 1/2"	9'- 11 1/4"	32'- 4"	8	5/2"	13'- 4"	--	---	-----	-----	7	10"	18'- 6"	52	60
14	8	19 3/4"	19 3/4"	8"	13	13'- 0"	13	13'- 0"	6	6'- 0"	4	5"	15'- 0"	6'- 1 3/4"	26'- 9"	8	5"	15'- 0"	--	---	-----	-----	4	12"	11'- 0"	60	28
14	10	19 3/4"	19 3/4"	8"	13	13'- 0"	13	13'- 0"	8	8'- 0"	4	5"	15'- 0"	7'- 1 3/4"	28'- 9"	8	5"	15'- 0"	3	5"	4'- 3 5/8"	8'- 5"	4	12"	13'- 0"	60	36
14	12	20"	20"	8"	13	13'- 0"	13	13'- 0"	10	10'- 0"	5	5"	15'- 0"	8'- 2"	30'- 8"	8	5"	15'- 0"	--	---	-----	-----	6	11 1/2"	15'- 0"	60	44
14	14	19 3/4"	19 3/4"	9"	13	13'- 0"	13	13'- 0"	12	12'- 0"	5	5"	15'- 2"	9'- 1 3/4"	32'- 10"	8	5"	15'- 2"	3	5"	4'- 4 5/8"	8'- 7"	5	6 1/2"	17'- 0"	60	52
14	16	19 3/4"	19 3/4"	10 1/4"	13	13'- 0"	13	13'- 0"	14	14'- 0"	6	4 1/2"	15'- 4 1/2"	10'- 1 3/4"	34'- 10"	8	4 1/2"	15'- 4"	--	---	-----	-----	5	5 1/2"	19'- 0"	60	60

SPAN	HGHT	REINFORCING STEEL (LBS./LONG. JT)	QUAN./LF		HEADWALLS							
			CONCRETE CLASS A4 (CY/LF)	REINFORCING STEEL (LBS./LF)	HEADWALL LENGTH	SIZE	HW I LENGTH	INLET CONCRETE CL. A4 (CY)	INLET REINFORCING STEEL (LBS)	OUTLET CONCRETE CL. A4 (CY)	OUTLET REINFORCING STEEL (LBS)	WINGWALL
12	14	61.776	2.253	465.711	14'-10"	6	14'- 6"	2.656	87.116	2.689	87.116	Y
12	16	64.600	2.469	591.785	14'-10"	6	14'- 6"	2.731	87.116	2.763	87.116	CC
14	8	59.984	2.280	343.315	16'-10"	6	16'- 6"	2.325	99.132	2.365	99.132	M
14	10	62.808	2.376	385.789	16'-10"	6	16'- 6"	2.511	99.132	2.551	99.132	Q
14	12	65.632	2.493	449.413	16'-10"	6	16'- 6"	2.689	99.132	2.729	99.132	U
14	14	68.456	2.670	514.836	16'-10"	6	16'- 6"	2.776	99.132	2.815	99.132	Y
14	16	71.280	2.920	646.499	16'-10"	6	16'- 6"	2.801	99.132	2.839	99.132	CC

For Typical Section, notes and other details, refer to Standard BCB-DT.



DIMENSIONS						REINFORCING STEEL																					
SPAN	HGHT	T1	T2	T3		BH1						BH2			BH3			BV1			NO. BL1 BARS	NO. BL2 BARS					
(FT.)	(FT.)	TOP SLAB (IN.)	BOTTOM SLAB (IN.)	WALL (IN.)	A	B	C	D	E	F	SIZE	SPACING C-C	a	b	LENGTH	SIZE	SPACING C-C	LENGTH	SIZE	SPACING C-C			a	LENGTH	SIZE	SPACING C-C	LENGTH
12	14	19 1/2"	19 1/2"	9 3/4"	11	11'-0"	11	11'-0"	12	12'-0"	5	5/2"	13'-3 1/2"	9'-1 1/2"	30'-11"	8	5/2"	13'-3"	4	5/2"	4'-1 1/2"	7'-10"	6	8"	16'-11"	52	52
12	16	19 1/2"	19 1/2"	11"	11	11'-0"	11	11'-0"	14	14'-0"	6	5/2"	13'-6"	10'-1 1/2"	32'-11"	8	5/2"	13'-6"	3	5/2"	4'-1 3/4"	8'-1"	8	12"	18'-11"	52	60
14	8	22 1/2"	22 1/2"	8"	13	13'-0"	13	13'-0"	6	6'-0"	4	5"	15'-0"	6'-4 1/2"	27'-3"	8	5"	15'-0"	--	--	-----	-----	4	12"	11'-5"	60	28
14	10	22 3/4"	22 3/4"	8"	13	13'-0"	13	13'-0"	8	8'-0"	4	5"	15'-0"	7'-4 3/4"	29'-3"	8	5"	15'-0"	3	5"	4'-3 5/8"	8'-5"	4	6 1/2"	13'-6"	60	36
14	12	22 3/4"	22 3/4"	8 1/4"	13	13'-0"	13	13'-0"	10	10'-0"	5	4 1/2"	15'-1/2"	8'-4 3/4"	31'-2"	8	4 1/2"	15'-0"	--	--	-----	-----	6	9"	15'-6"	60	44
14	14	22 3/4"	22 3/4"	9 1/2"	13	13'-0"	13	13'-0"	12	12'-0"	5	5"	15'-3"	9'-4 3/4"	33'-5"	8	5"	15'-3"	3	5"	4'-5 1/8"	8'-8"	5	5 1/2"	17'-6"	60	52
14	16	22 3/4"	22 3/4"	11"	13	13'-0"	13	13'-0"	14	14'-0"	6	4 1/2"	15'-6"	10'-4 3/4"	35'-6"	8	4 1/2"	15'-6"	--	--	-----	-----	7	9 1/2"	19'-6"	60	60

SPAN	HGHT	REINFORCING STEEL (LBS./LONG. JT)	QUAN./LF	HEADWALLS								
				G		HW1		INLET CONCRETE CL. A4 (CY)	INLET REINFORCING STEEL (LBS)	OUTLET CONCRETE CL. A4 (CY)	OUTLET REINFORCING STEEL (LBS)	WINGWALL
				HEADWALL LENGTH	SIZE	LENGTH	LENGTH					
12	14	61.776	2.189	471.266	14'-10"	6	14'-6"	2.572	87.116	2.604	87.116	Y
12	16	64.600	2.751	557.865	14'-10"	6	14'-6"	2.588	87.116	2.620	87.116	CC
14	8	59.984	2.540	345.475	16'-10"	6	16'-6"	2.267	99.132	2.308	99.132	N
14	10	62.808	2.658	403.321	16'-10"	6	16'-6"	2.446	99.132	2.486	99.132	R
14	12	65.632	2.744	505.676	16'-10"	6	16'-6"	2.607	99.132	2.647	99.132	V
14	14	68.456	3.011	533.304	16'-10"	6	16'-6"	2.653	99.132	2.692	99.132	Z
14	16	71.280	3.301	668.433	16'-10"	6	16'-6"	2.638	99.132	2.676	99.132	DD

For Typical Section, notes and other details, refer to Standard BCB-DT.

DIMENSIONS						REINFORCING STEEL																					
SPAN	HGHT	T1	T2	T3		BH1						BH2			BH3			BV1			NO. BL1 BARS	NO. BL2 BARS					
(FT.)	(FT.)	TOP SLAB (IN.)	BOTTOM SLAB (IN.)	WALL (IN.)	A	B	C	D	E	F	SIZE	SPACING C-C	a	b	LENGTH	SIZE	SPACING C-C	LENGTH	SIZE	SPACING C-C			a	LENGTH	SIZE	SPACING C-C	LENGTH
12	14	21 3/4"	21 3/4"	10 1/2"	11	11'- 0"	11	11'- 0"	12	12'- 0"	5	5/2"	13'- 5"	9'- 3 3/4"	31'- 5"	8	5/2"	13'- 5"	4	5/2"	4'- 1 1/4"	7'- 11"	7	10 1/2"	17'- 3"	52	52
12	16	21 3/4"	21 3/4"	12"	11	11'- 0"	11	11'- 0"	14	14'- 0"	6	5"	13'- 8"	10'- 3 3/4"	33'- 6"	8	5"	13'- 8"	3	5"	4'- 2 3/4"	8'- 3"	8	12"	19'- 3"	52	60
14	8	24 3/4"	24 3/4"	8 1/4"	13	13'- 0"	13	13'- 0"	6	6'- 0"	4	5"	15'- 1/2"	6'- 6 3/4"	27'- 8"	8	5"	15'- 0"	--	---	-----	-----	4	12"	11'- 9"	60	28
14	10	24 3/4"	24 3/4"	8"	13	13'- 0"	13	13'- 0"	8	8'- 0"	4	4 1/2"	15'- 0"	7'- 6 3/4"	29'- 7"	8	4 1/2"	15'- 0"	--	---	-----	-----	6	11 1/2"	13'- 9"	60	36
14	12	24 3/4"	24 3/4"	9 1/4"	13	13'- 0"	13	13'- 0"	10	10'- 0"	5	4 1/2"	15'- 2 1/2"	8'- 6 3/4"	31'- 8"	8	4 1/2"	15'- 3"	--	---	-----	-----	6	9 1/2"	15'- 9"	60	44
14	14	24 1/2"	24 1/2"	10 1/2"	13	13'- 0"	13	13'- 0"	12	12'- 0"	6	4 1/2"	15'- 5"	9'- 6 1/2"	33'- 8"	8	4 1/2"	15'- 5"	--	---	-----	-----	6	8"	17'- 9"	60	52
14	16	24 1/2"	24 1/2"	12"	13	13'- 0"	13	13'- 0"	14	14'- 0"	5	4 1/2"	15'- 8"	10'- 6 1/2"	36'- 1"	8	4 1/2"	15'- 8"	4	4 1/2"	4'- 7 5/8"	9'- 0"	6	7"	19'- 9"	60	60

SPAN	HGHT	REINFORCING STEEL (LBS./LONG. JT)	QUAN./LF		HEADWALLS									
			CONCRETE CLASS A4 (CY/LF)	REINFORCING STEEL (LBS./LF)	HEADWALL LENGTH	HW I SIZE	LENGTH	INLET CONCRETE CL. A4 (CY)	INLET REINFORCING STEEL (LBS)	OUTLET CONCRETE CL. A4 (CY)	OUTLET REINFORCING STEEL (LBS)	WINGWALL		
12	14	61.776	2.759	480.335	14'-10"	6	14'- 6"		2.457	87.116	2.489	87.116	Z	
12	16	64.600	3.061	606.544	14'-10"	6	14'- 6"		2.431	87.116	2.462	87.116	DD	
14	8	59.984	2.772	347.256	16'-10"	6	16'- 6"		2.186	99.132	2.227	99.132	N	
14	10	62.808	2.847	415.712	16'-10"	6	16'- 6"		2.390	99.132	2.431	99.132	R	
14	12	65.632	3.063	509.699	16'-10"	6	16'- 6"		2.452	99.132	2.492	99.132	V	
14	14	68.456	3.283	628.839	16'-10"	6	16'- 6"		2.491	99.132	2.529	99.132	Z	
14	16	71.280	3.597	652.288	16'-10"	6	16'- 6"		2.461	99.132	2.498	99.132	DD	

For Typical Section, notes and other details, refer to Standard BCB-DT.

DIMENSIONS						REINFORCING STEEL																					
SPAN	HGHT	T1	T2	T3		BH1						BH2			BH3			BV1			NO. BL1 BARS	NO. BL2 BARS					
(FT.)	(FT.)	TOP SLAB (IN.)	BOTTOM SLAB (IN.)	WALL (IN.)	A	B	C	D	E	F	SIZE	SPACING C-C	a	b	LENGTH	SIZE	SPACING C-C	LENGTH	SIZE	SPACING C-C			a	LENGTH	SIZE	SPACING C-C	LENGTH
12	14	22 3/4"	22 3/4"	11 1/4"	11	11'- 0"	11	11'- 0"	12	12'- 0"	5	5"	13'- 6 1/2"	9'- 4 3/4"	31'- 8"	8	5"	13'- 6"	4	5"	4'- 2"	8'- 1"	7	10 1/2"	17'- 6"	52	52
12	16	22 3/4"	22 3/4"	12 3/4"	11	11'- 0"	11	11'- 0"	14	14'- 0"	6	5"	13'- 9 1/2"	10'- 4 3/4"	33'- 9"	8	5"	13'- 9"	3	5"	4'- 3 1/2"	8'- 5"	6	6 1/2"	19'- 6"	52	60
14	8	27 3/4"	27 3/4"	9"	13	13'- 0"	13	13'- 0"	6	6'- 0"	4	4 1/2"	15'- 2"	6'- 9 3/4"	28'- 3"	8	4 1/2"	15'- 2"	--	---	-----	-----	4	12"	12'- 3"	60	28
14	10	27 3/4"	27 3/4"	8 1/2"	13	13'- 0"	13	13'- 0"	8	8'- 0"	4	4 1/2"	15'- 1"	7'- 9 3/4"	30'- 2"	8	4 1/2"	15'- 1"	--	---	-----	-----	6	9 1/2"	14'- 3"	60	36
14	12	27 1/2"	27 1/2"	10"	13	13'- 0"	13	13'- 0"	10	10'- 0"	5	4 1/2"	15'- 4"	8'- 9 1/2"	32'- 3"	9	4 1/2"	15'- 4"	--	---	-----	-----	4	4"	16'- 3"	60	44
14	14	27 1/2"	27 1/2"	11 1/4"	13	13'- 0"	13	13'- 0"	12	12'- 0"	6	4 1/2"	15'- 6 1/2"	9'- 9 1/2"	34'- 4"	8	4 1/2"	15'- 6"	--	---	-----	-----	5	5"	18'- 3"	60	52
14	16	27 3/4"	27 3/4"	12 3/4"	13	13'- 0"	13	13'- 0"	14	14'- 0"	5	4 1/2"	15'- 9 1/2"	10'- 9 3/4"	36'- 9"	8	4 1/2"	15'- 9"	4	4 1/2"	4'- 8 3/8"	9'- 2"	7	8 1/2"	20'- 3"	60	60

SPAN	HGHT	REINFORCING STEEL (LBS./LONG. JT)	QUAN./LF		HEADWALLS								
			CONCRETE CLASS A4 (CY/LF)	REINFORCING STEEL (LBS./LF)	HEADWALL LENGTH	SIZE	HW I LENGTH	INLET CONCRETE CL. A4 (CY)	INLET REINFORCING STEEL (LBS)	OUTLET CONCRETE CL. A4 (CY)	OUTLET REINFORCING STEEL (LBS)	WINGWALL	
	14	61.776	2.923	519.437	14'-10"	6	14'- 6"		2.351	87.116	2.382	87.116	Z
	16	64.600	3.238	615.365	14'-10"	6	14'- 6"		2.314	87.116	2.344	87.116	DD
	8	59.984	3.112	383.593	16'-10"	6	16'- 6"		2.063	99.132	2.103	99.132	O
	10	62.808	3.175	429.948	16'-10"	6	16'- 6"		2.281	99.132	2.321	99.132	S
	12	65.632	3.398	579.194	16'-10"	6	16'- 6"		2.315	99.132	2.354	99.132	W
	14	68.456	3.660	646.752	16'-10"	6	16'- 6"		2.333	99.132	2.371	99.132	AA
	16	71.280	4.012	673.532	16'-10"	6	16'- 6"		2.281	99.132	2.318	99.132	EE

For Typical Section, notes and other details, refer to Standard BCB-DT.

DIMENSIONS						REINFORCING STEEL																					
SPAN	HGHT	T1	T2	T3		BH1						BH2			BH3			BV1			NO. BL1 BARS	NO. BL2 BARS					
(FT.)	(FT.)	TOP SLAB (IN.)	BOTTOM SLAB (IN.)	WALL (IN.)	A	B	C	D	E	F	SIZE	SPACING C-C	a	b	LENGTH	SIZE	SPACING C-C	LENGTH	SIZE	SPACING C-C			a	LENGTH	SIZE	SPACING C-C	LENGTH
12	14	25 1/4"	25 1/4"	12"	11	11'- 0"	11	11'- 0"	12	12'- 0"	5	5"	13'- 8"	9'- 7 1/4"	32'- 3"	8	5"	13'- 8"	4	5"	4'- 2 3/4"	8'- 2"	5	5"	17'- 11"	52	52
12	16	25 1/4"	25 1/4"	13 3/4"	11	11'- 0"	11	11'- 0"	14	14'- 0"	6	4 1/2"	13'- 11 1/2"	10'- 7 1/4"	34'- 4"	9	4 1/2"	14'- 0"	3	4 1/2"	4'- 4 1/2"	8'- 7"	7	8 1/2"	19'- 11"	52	60
14	8	28 3/4"	28 3/4"	10 1/2"	13	13'- 0"	13	13'- 0"	6	6'- 0"	4	4 1/2"	15'- 5"	6'- 10 3/4"	28'- 8"	8	4 1/2"	15'- 5"	--	---	-----	-----	4	12"	12'- 5"	60	28
14	10	28 1/2"	28 1/2"	9 3/4"	13	13'- 0"	13	13'- 0"	8	8'- 0"	4	4 1/2"	15'- 3 1/2"	7'- 10 1/2"	30'- 6"	8	4 1/2"	15'- 3"	3	4 1/2"	4'- 5 3/8"	8'- 8"	6	11 1/2"	14'- 5"	60	36
14	12	28 1/2"	28 1/2"	10 1/2"	13	13'- 0"	13	13'- 0"	10	10'- 0"	4	4 1/2"	15'- 5"	8'- 10 1/2"	32'- 8"	8	4 1/2"	15'- 5"	4	4 1/2"	4'- 6 1/8"	8'- 9"	5	6"	16'- 5"	60	44
14	14	28 1/2"	28 1/2"	12 1/4"	13	13'- 0"	13	13'- 0"	12	12'- 0"	5	4 1/2"	15'- 8 1/2"	9'- 10 1/2"	34'- 10"	9	4 1/2"	15'- 8"	3	4 1/2"	4'- 7 7/8"	9'- 1"	7	10 1/2"	18'- 5"	60	52
14	16	28 1/2"	28 1/2"	13 3/4"	13	13'- 0"	13	13'- 0"	14	14'- 0"	6	4 1/2"	15'- 11 1/2"	10'- 10 1/2"	36'- 11"	9	4 1/2"	15'- 11"	3	4 1/2"	4'- 9 3/8"	9'- 4"	6	6 1/2"	20'- 5"	60	60

SPAN	HGHT	REINFORCING STEEL (LBS./LONG. JT)	QUAN./LF		HEADWALLS									
			CONCRETE CLASS A4 (CY/LF)	REINFORCING STEEL (LBS./LF)	HEADWALL LENGTH	HW 1		INLET CONCRETE CL. A4 (CY)	INLET REINFORCING STEEL (LBS)	OUTLET CONCRETE CL. A4 (CY)	OUTLET REINFORCING STEEL (LBS)	WINGWALL		
(FT.)	(FT.)			SIZE		LENGTH								
12	14	61.776	3.221	532.966	14'-10"	6	14'- 6"	2.205	87.116	2.236	87.116	Z		
12	16	64.600	3.572	735.565	14'-10"	6	14'- 6"	2.124	87.116	2.153	87.116	DD		
14	8	59.984	3.326	388.860	16'-10"	6	16'- 6"	1.917	99.132	1.955	99.132	O		
14	10	62.808	3.358	459.387	16'-10"	6	16'- 6"	2.147	99.132	2.186	99.132	S		
14	12	65.632	3.551	523.375	16'-10"	6	16'- 6"	2.234	99.132	2.272	99.132	W		
14	14	68.456	3.873	659.960	16'-10"	6	16'- 6"	2.187	99.132	2.224	99.132	AA		
14	16	71.280	4.206	797.650	16'-10"	6	16'- 6"	2.129	99.132	2.165	99.132	EE		

For Typical Section, notes and other details, refer to Standard BCB-DT.

DIMENSIONS						REINFORCING STEEL																					
SPAN	HGHT	T1	T2	T3		BH1						BH2			BH3			BV1			NO. BL1 BARS	NO. BL2 BARS					
(FT.)	(FT.)	TOP SLAB (IN.)	BOTTOM SLAB (IN.)	WALL (IN.)	A	B	C	D	E	F	SIZE	SPACING C-C	a	b	LENGTH	SIZE	SPACING C-C	LENGTH	SIZE	SPACING C-C			a	LENGTH	SIZE	SPACING C-C	LENGTH
12	14	27 1/2"	27 1/2"	12 3/4"	11	11'- 0"	11	11'- 0"	12	12'- 0"	5	5"	13'- 9 1/2"	9'- 9 1/2"	32'- 9"	8	5"	13'- 9"	4	5"	4'- 3 1/2"	8'- 4"	8	12"	18'- 3"	52	52
12	16	27 3/4"	27 3/4"	14 1/2"	11	11'- 0"	11	11'- 0"	14	14'- 0"	6	4 1/2"	14'- 1"	10'- 9 3/4"	34'- 11"	9	4 1/2"	14'- 1"	3	4 1/2"	4'- 5 1/4"	8'- 8"	7	8"	20'- 3"	52	60
14	8	31 1/2"	31 1/2"	11 3/4"	13	13'- 0"	13	13'- 0"	6	6'- 0"	4	4 1/2"	15'- 7 1/2"	7'- 1 1/2"	29'- 4"	9	4 1/2"	15'- 7"	--	---	-----	-----	4	12"	12'- 11"	60	28
14	10	31 1/2"	31 1/2"	10 3/4"	13	13'- 0"	13	13'- 0"	8	8'- 0"	4	4 1/2"	15'- 5 1/2"	8'- 1 1/2"	31'- 2"	9	4 1/2"	15'- 6"	--	---	-----	-----	5	7 1/2"	14'- 11"	60	36
14	12	31 1/4"	31 1/4"	11 1/4"	13	13'- 0"	13	13'- 0"	10	10'- 0"	4	4 1/2"	15'- 6 1/2"	9'- 1 1/4"	33'- 3"	8	4 1/2"	15'- 6"	4	4 1/2"	4'- 6 7/8"	8'- 11"	6	8"	16'- 11"	60	44
14	14	31 1/4"	31 1/4"	13"	13	13'- 0"	13	13'- 0"	12	12'- 0"	5	4 1/2"	15'- 10"	10'- 1 1/4"	35'- 5"	9	4 1/2"	15'- 10"	3	4 1/2"	4'- 8 5/8"	9'- 3"	6	7"	18'- 11"	60	52
14	16	31 1/4"	31 1/4"	14 1/2"	13	13'- 0"	13	13'- 0"	14	14'- 0"	6	4 1/2"	16'- 1"	11'- 1 1/4"	37'- 6"	9	4 1/2"	16'- 1"	3	4 1/2"	4'- 10 1/8"	9'- 6"	6	6"	20'- 11"	60	60

SPAN	HGHT	REINFORCING STEEL (LBS./LONG. JT)	QUAN./LF		HEADWALLS							
			CONCRETE CLASS A4 (CY/LF)	REINFORCING STEEL (LBS./LF)	HEADWALL LENGTH	HW 1		INLET CONCRETE CL. A4 (CY)	INLET REINFORCING STEEL (LBS)	OUTLET CONCRETE CL. A4 (CY)	OUTLET REINFORCING STEEL (LBS)	WINGWALL
(FT.)	(FT.)			SIZE		LENGTH						
12	14	61.776	3.500	545.363	14'-10"	6	14'- 6"	2.080	87.116	2.110	87.116	AA
12	16	64.600	3.886	751.312	14'-10"	6	14'- 6"	1.979	87.116	2.008	87.116	EE
14	8	59.984	3.691	454.947	16'-10"	6	16'- 6"	1.732	99.132	1.770	99.132	O
14	10	62.808	3.738	495.505	16'-10"	6	16'- 6"	1.965	99.132	2.003	99.132	S
14	12	65.632	3.897	535.563	16'-10"	6	16'- 6"	2.071	99.132	2.109	99.132	W
14	14	68.456	4.232	678.268	16'-10"	6	16'- 6"	2.010	99.132	2.047	99.132	AA
14	16	71.280	4.579	818.453	16'-10"	6	16'- 6"	1.939	99.132	1.974	99.132	EE

For Typical Section, notes and other details, refer to Standard BCB-DT.