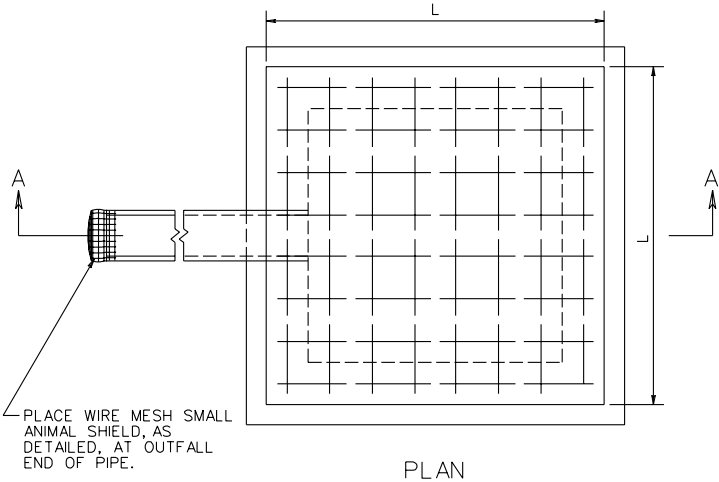


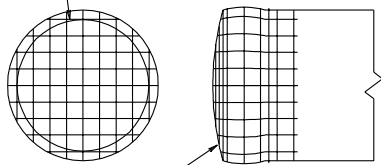
REVISED 7/01

SB-1



PLAN

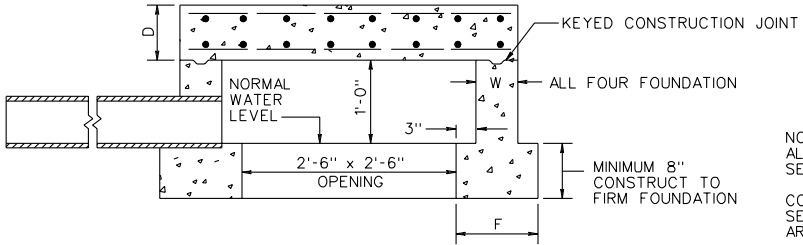
3/4" X 3/4" MESH,
HARDWARE CLOTH
MIN. 17 GAUGE,
GALVANIZED
AFTER WEAVING.



CRIMP AROUND OUTLET END OF
PIPE AND SECURE TO PIPE WITH
GALVANIZED STEEL WIRE

ANIMAL SHIELD DETAIL

PLACE WIRE MESH SMALL
ANIMAL SHIELD, AS
DETAILED, AT OUTFALL
END OF PIPE.



SECTION A-A

NOTES:
ALL CONCRETE TO BE CLASS A3 IF CAST IN PLACE. FOR PRECAST
SEE SHEET 110.02.

CONCRETE QUANTITIES SHOWN ARE BASED ON A 6" CONCRETE
SEWER PIPE. IF OTHER SIZE OR TYPE OF PIPE IS USED QUANTITIES
ARE TO BE ADJUSTED ACCORDINGLY.

COST OF WIRE MESH SHIELD AT OUTFALL END OF PIPE IS TO BE
INCLUDED IN PRICE BID FOR PIPE.

THIS ITEM MAY BE PRECAST OR CAST IN PLACE.

HEIGHT OF FILL	SIZE (L)	TOP SLAB (D)	SIDEWALLS (W)	FOOTING WIDTH (F)	REINFORCING STEEL				QUANTITIES		
					NO. REQ'D.	LENGTH	SIZE	SPACING C-C	CU. YDS. CONC.	REINF. STEEL LBS.	INCREMENT * CU. YDS.
BELOW 25'	4'	8"	6"	12"	32	3'-9"	#4	6"	0.995	80	0.043
25' - 50'	4'-4"	8"	8"	14"	32	4'-1"	#5	6"	1.240	136	0.053

* QUANTITIES SHOWN ARE BASED ON A 8" DEPTH OF FOOTING. ADD
INCREMENTAL QUANTITY FOR EACH ADDITIONAL 1" OF DEPTH.

STANDARD SPRING BOX

VIRGINIA DEPARTMENT OF TRANSPORTATION

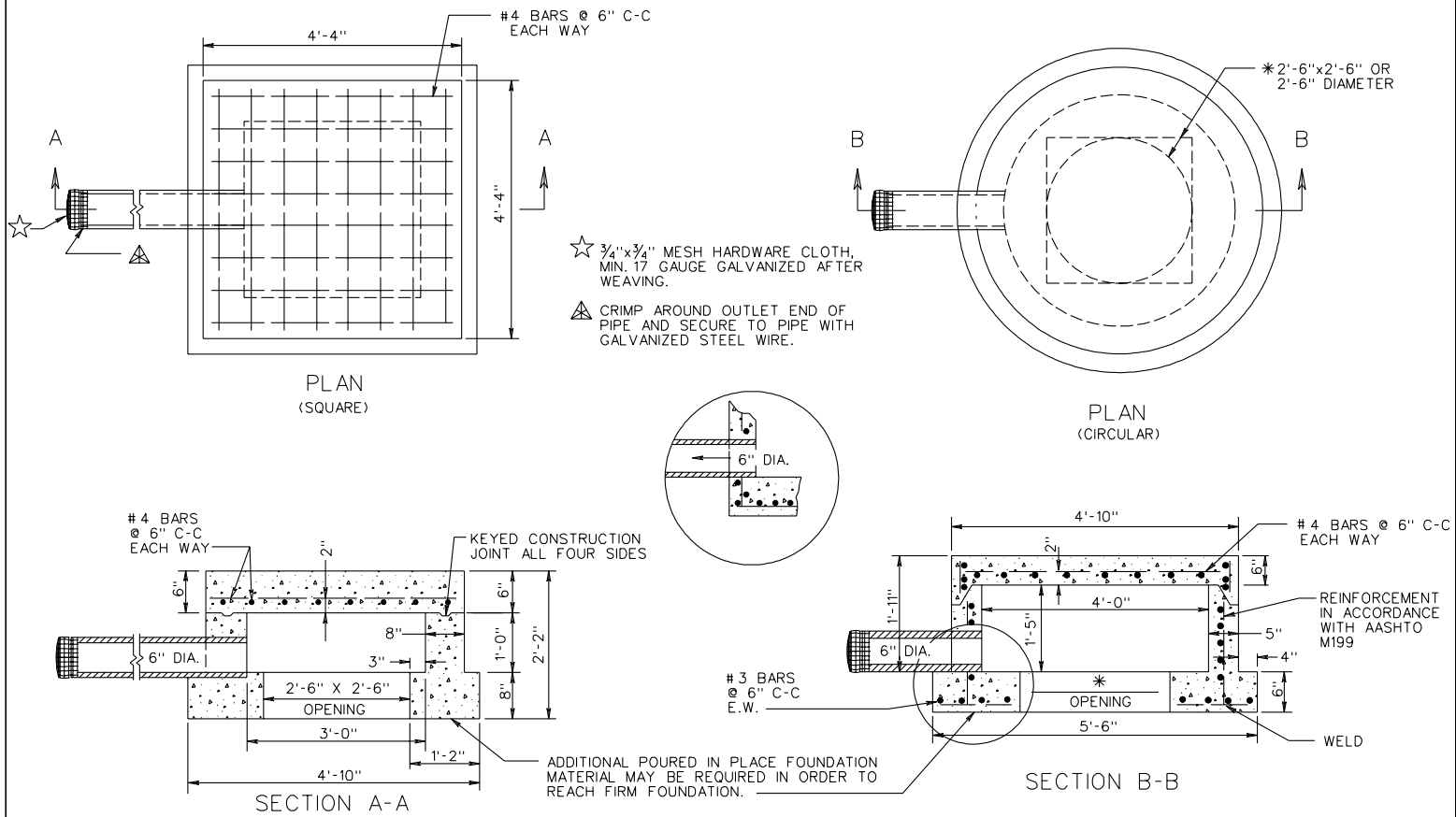
SPECIFICATION
REFERENCE

105
232
302

110.01

REVISED 7/01

SB-1 PC



NOTES:
CONCRETE TO BE 4000 PSI MINIMUM COMPRESSIVE STRENGTH.

REINFORCING STEEL IN ACCORDANCE WITH A.S.T.M. A-615 (REINFORCING BARS).

PIPE OPENING AS REQUIRED 4" MIN. 8" MAX. LARGER THAN O.D. PIPE.

DIMENSIONS SHOWN ARE MINIMUM. ACTUAL MEASUREMENTS MAY VARY WITH MANUFACTURER'S TOLERANCES.

SPECIFICATION REFERENCE
105

PRECAST SPRING BOX
VIRGINIA DEPARTMENT OF TRANSPORTATION

110.02