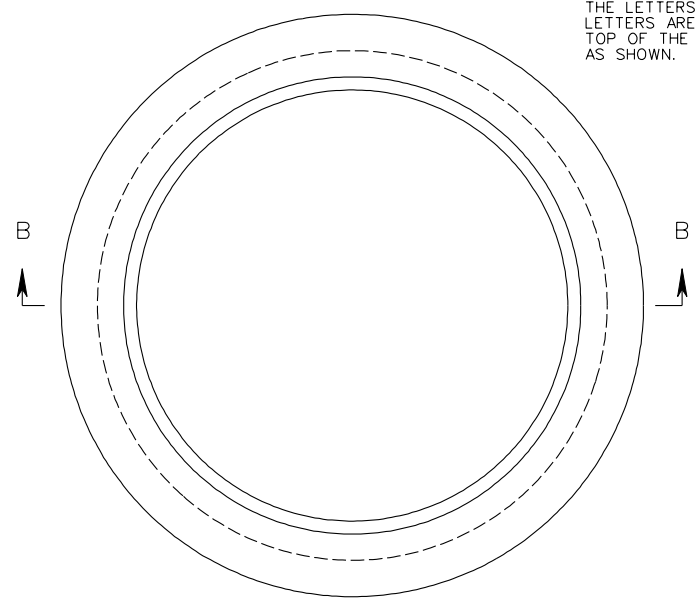
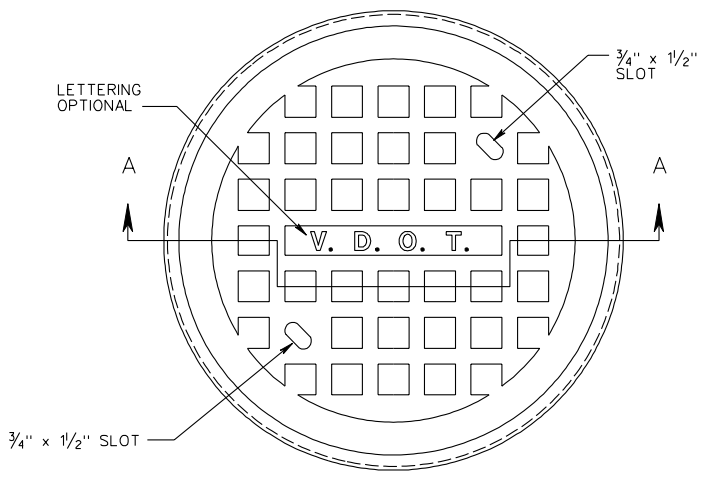


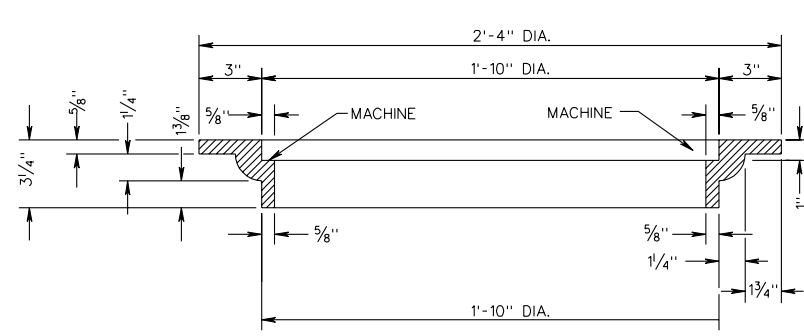
NOTE:
THE LETTERS V.D.O.T. ARE OPTIONAL, IF USED THE
LETTERS ARE TO BE CAST IN THE DEPRESSION IN
TOP OF THE COVER 1" WIDE AND RAISED 1/4" HIGH
AS SHOWN.



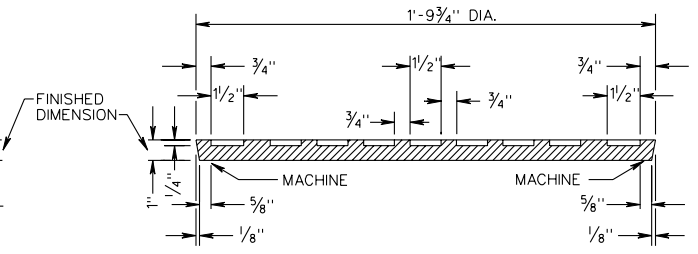
FRAME



COVER



SECTION B-B



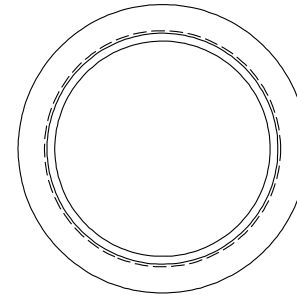
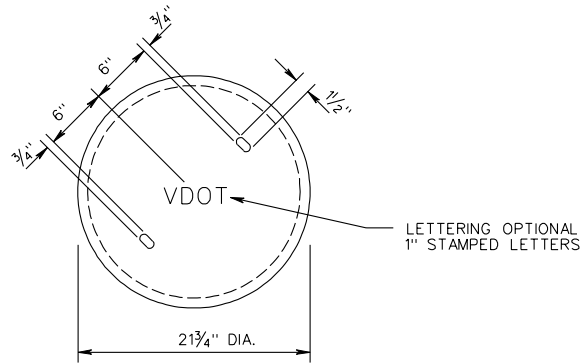
SECTION A-A

APPROXIMATE WEIGHT
CAST IRON
FRAME 86 ± 4 LBS.
COVER 83 ± 4 LBS.

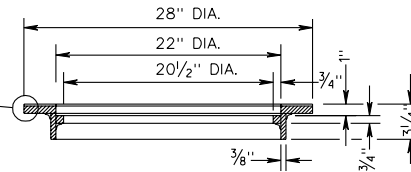
SPECIFICATION REFERENCE
224 302

STANDARD INLET AND FRAME COVER

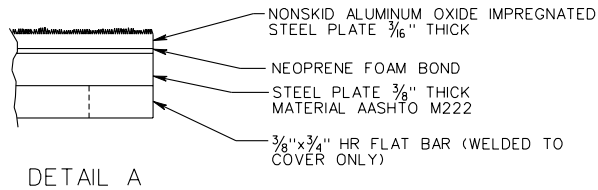
VIRGINIA DEPARTMENT OF TRANSPORTATION



SEE
DETAIL A



SECTION C-C
INLET FRAME

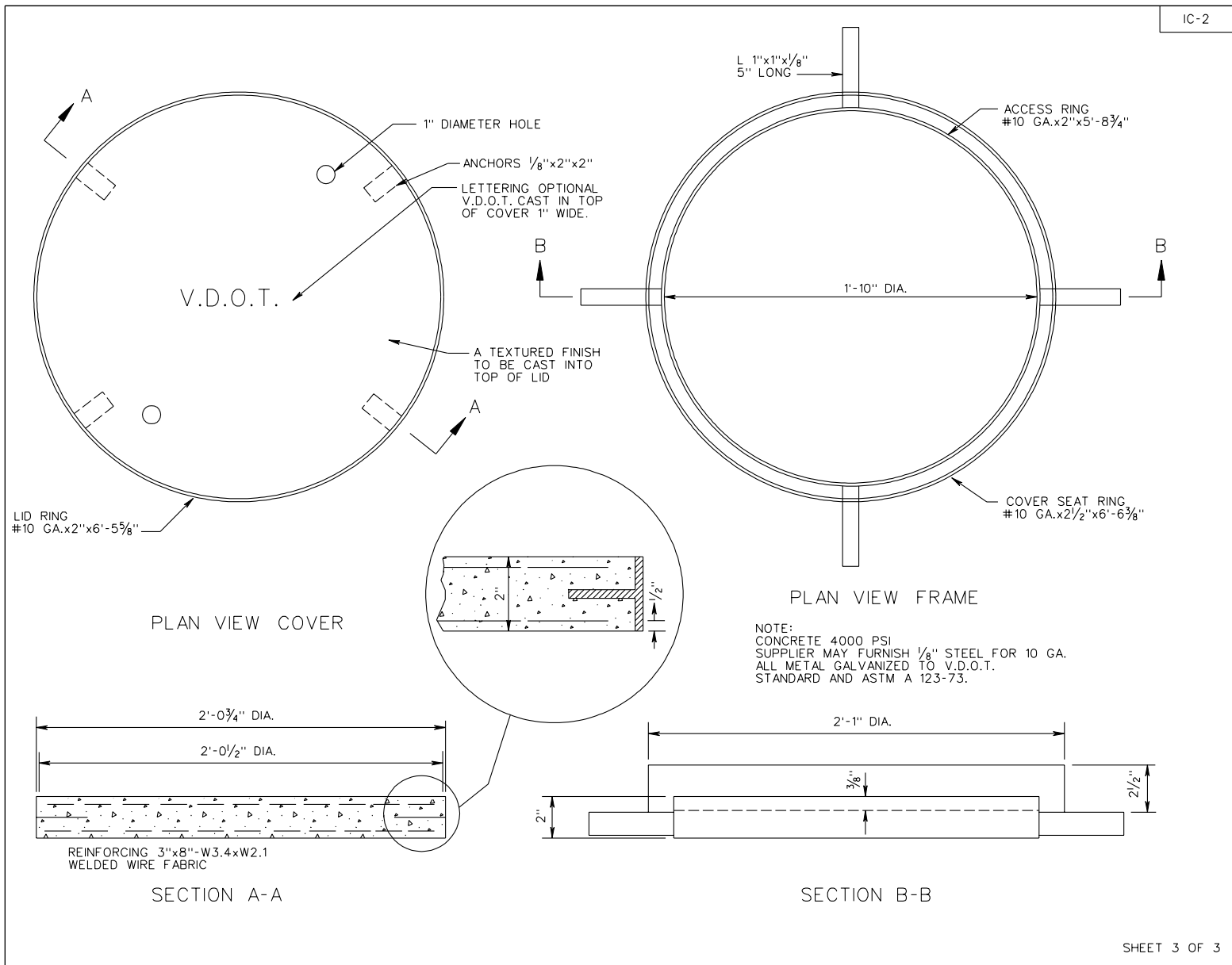


NOTES:
STRUCTURAL COMPONENTS SHALL CONFORM
TO AASHTO M222.

FRAME AND COVER SHALL HAVE A CONTINUOUS
FLASH FIT.

STANDARD INLET AND FRAME COVER

VIRGINIA DEPARTMENT OF TRANSPORTATION



SPECIFICATION REFERENCE
105 302

PRECAST INLET AND FRAME COVER

VIRGINIA DEPARTMENT OF TRANSPORTATION