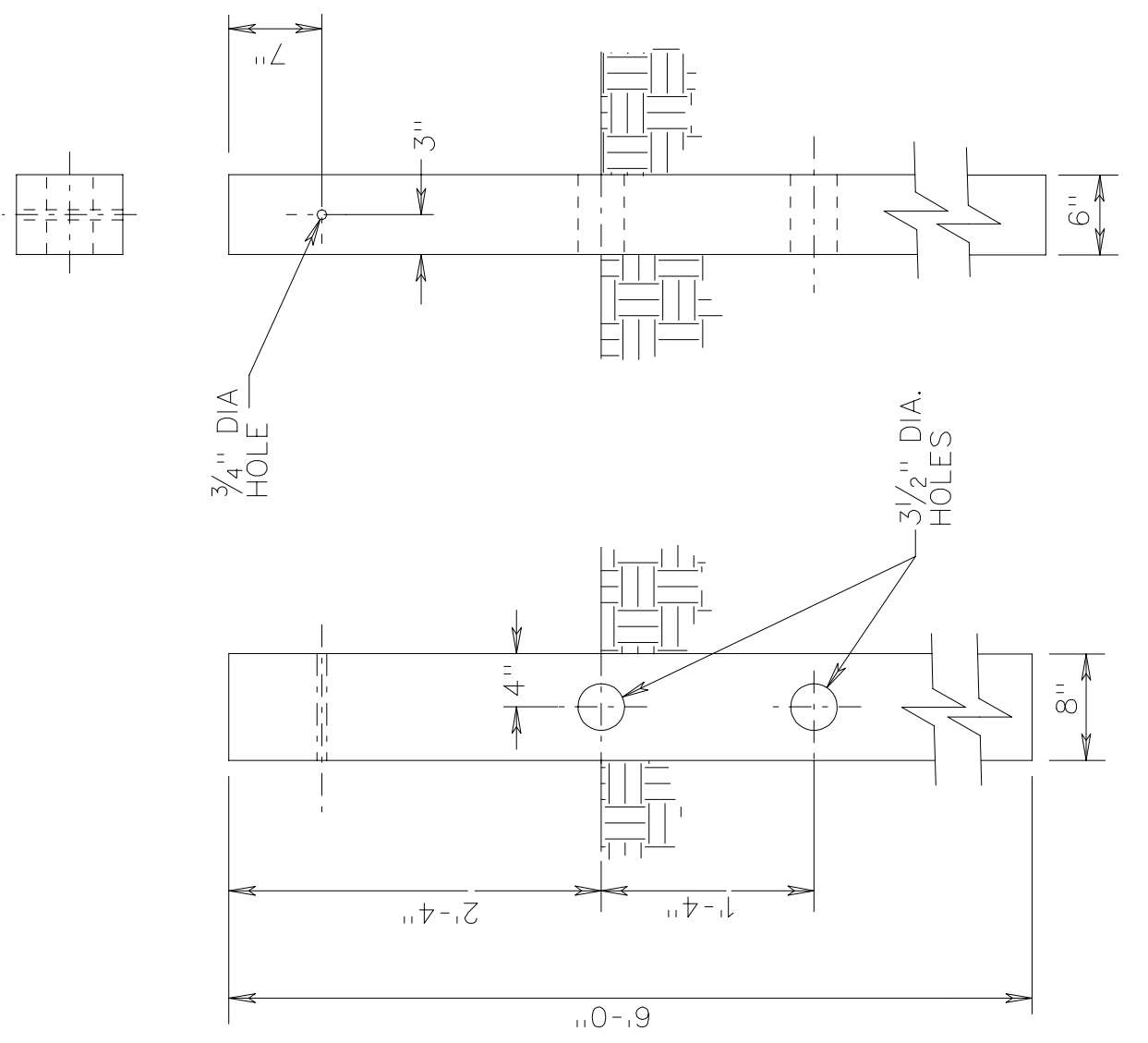
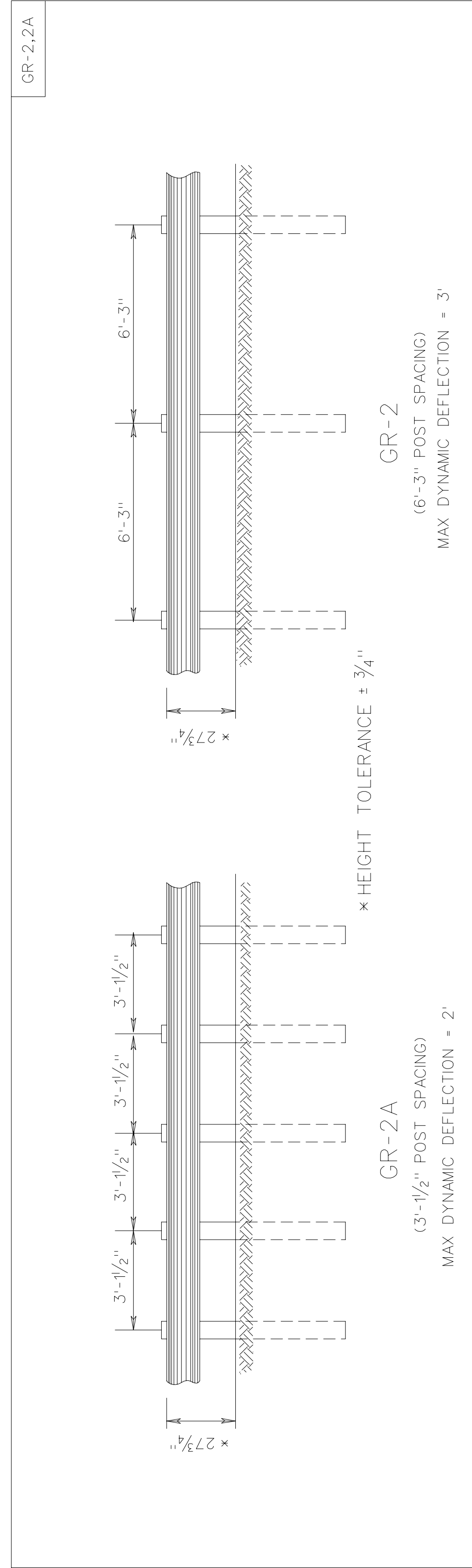


SURVEYED BY -----
SUPERVISED BY -----
DESIGNED BY -----

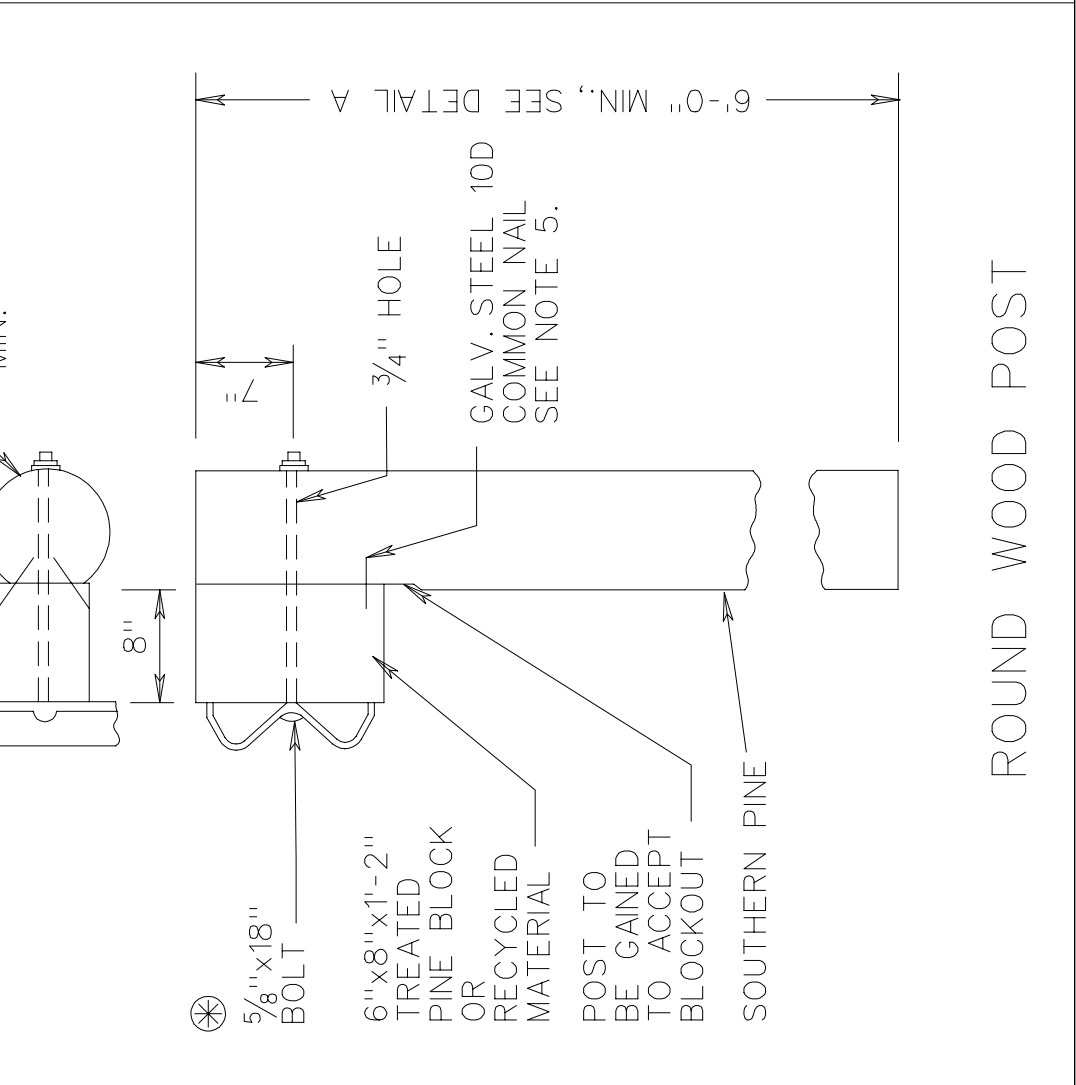
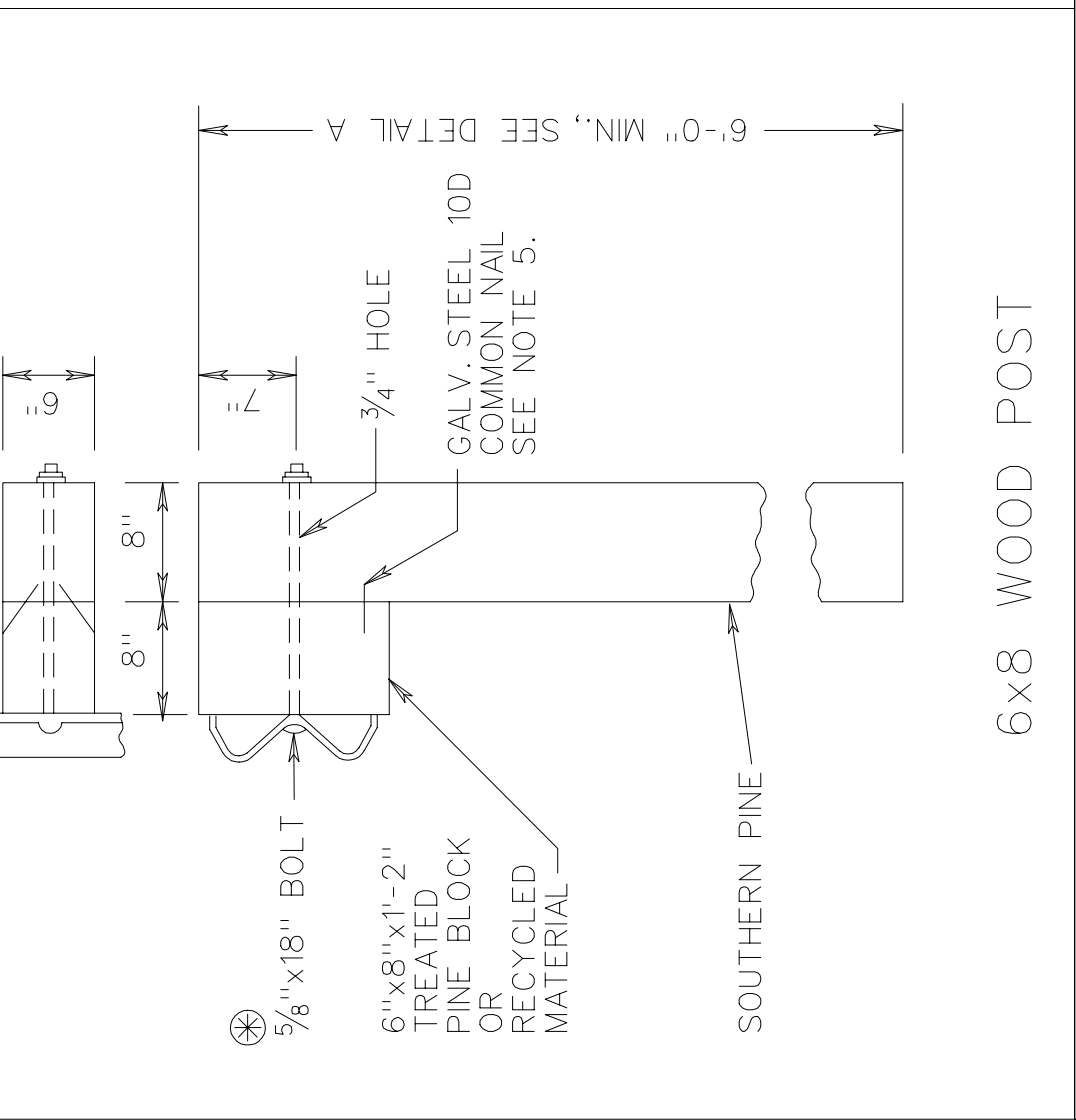
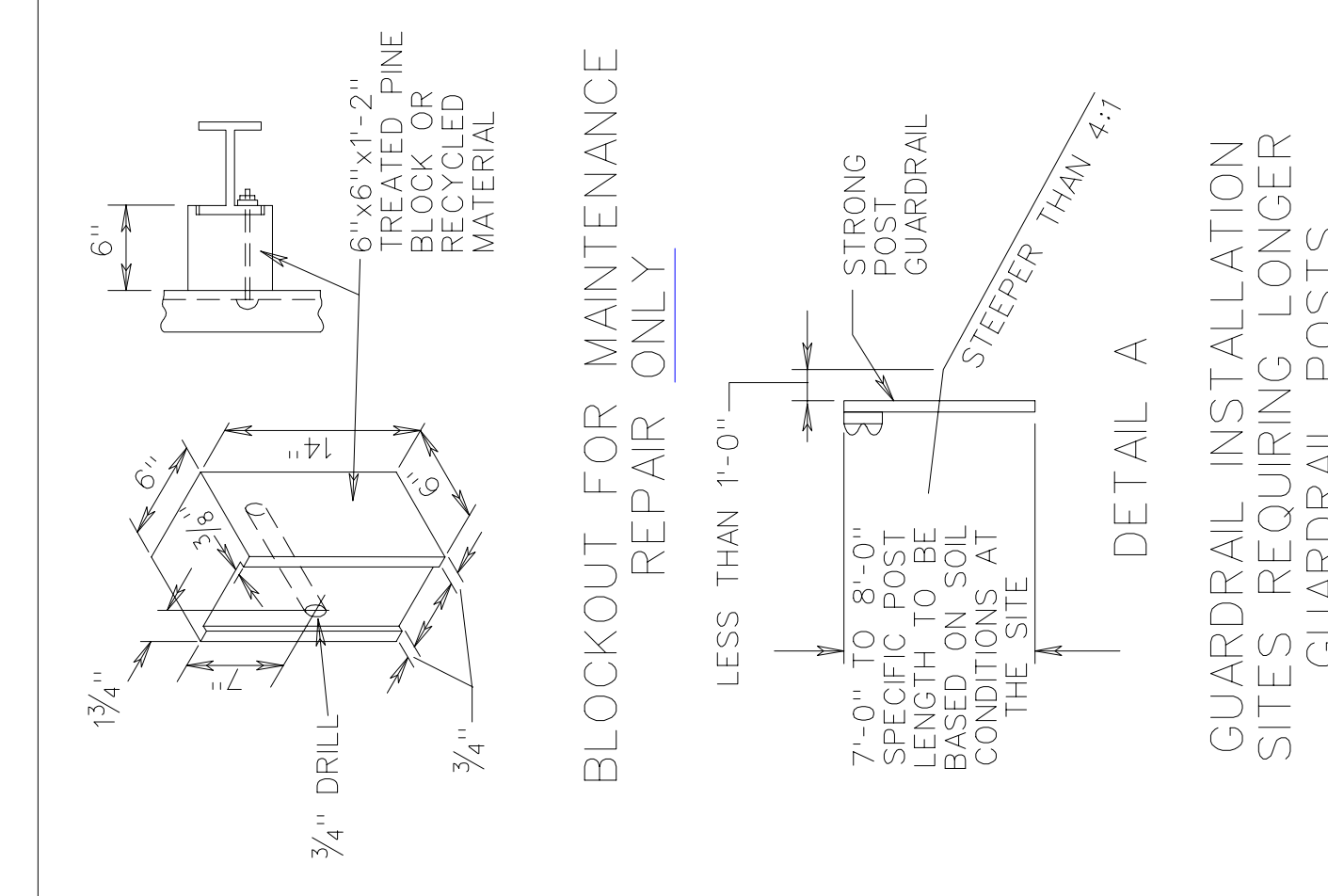
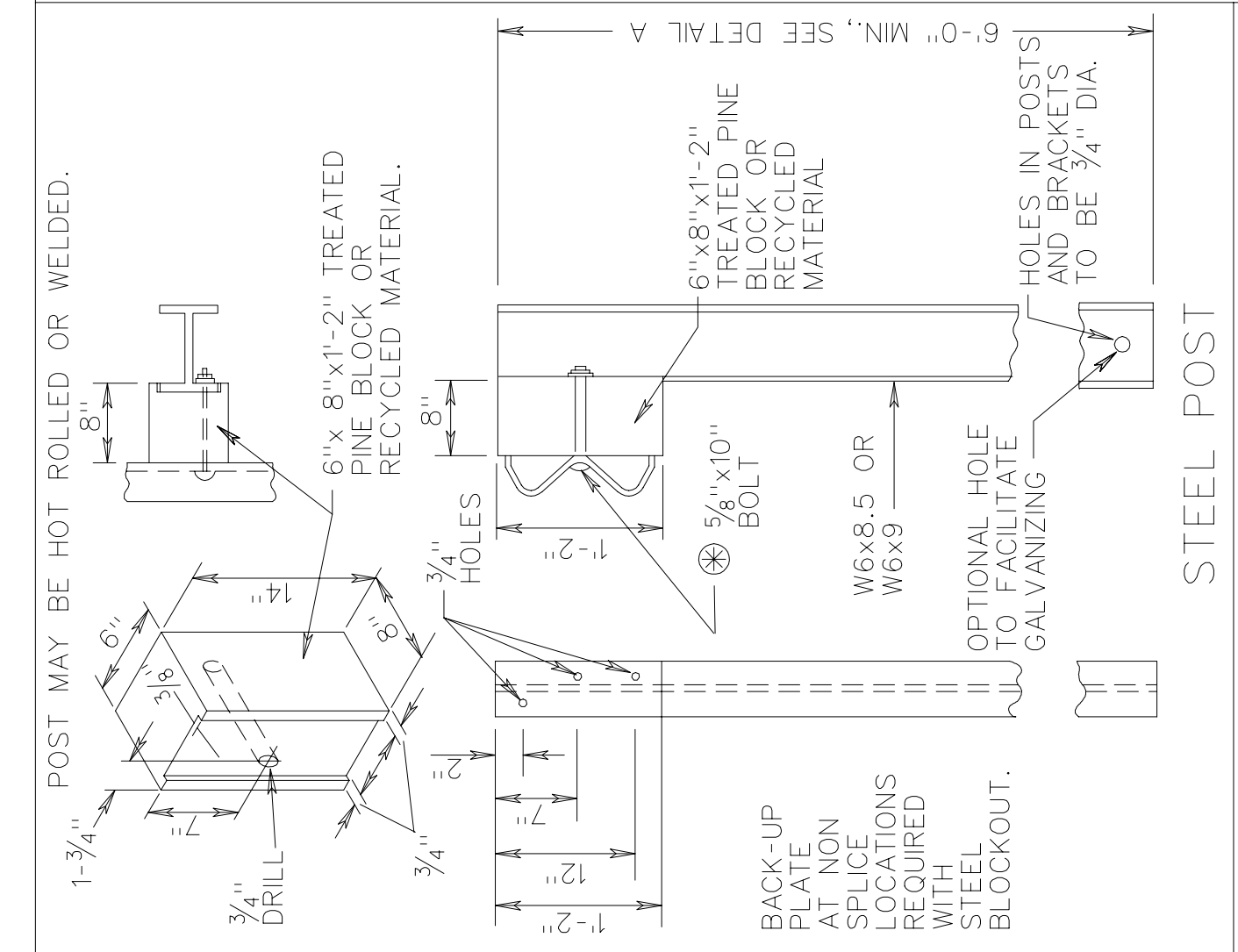
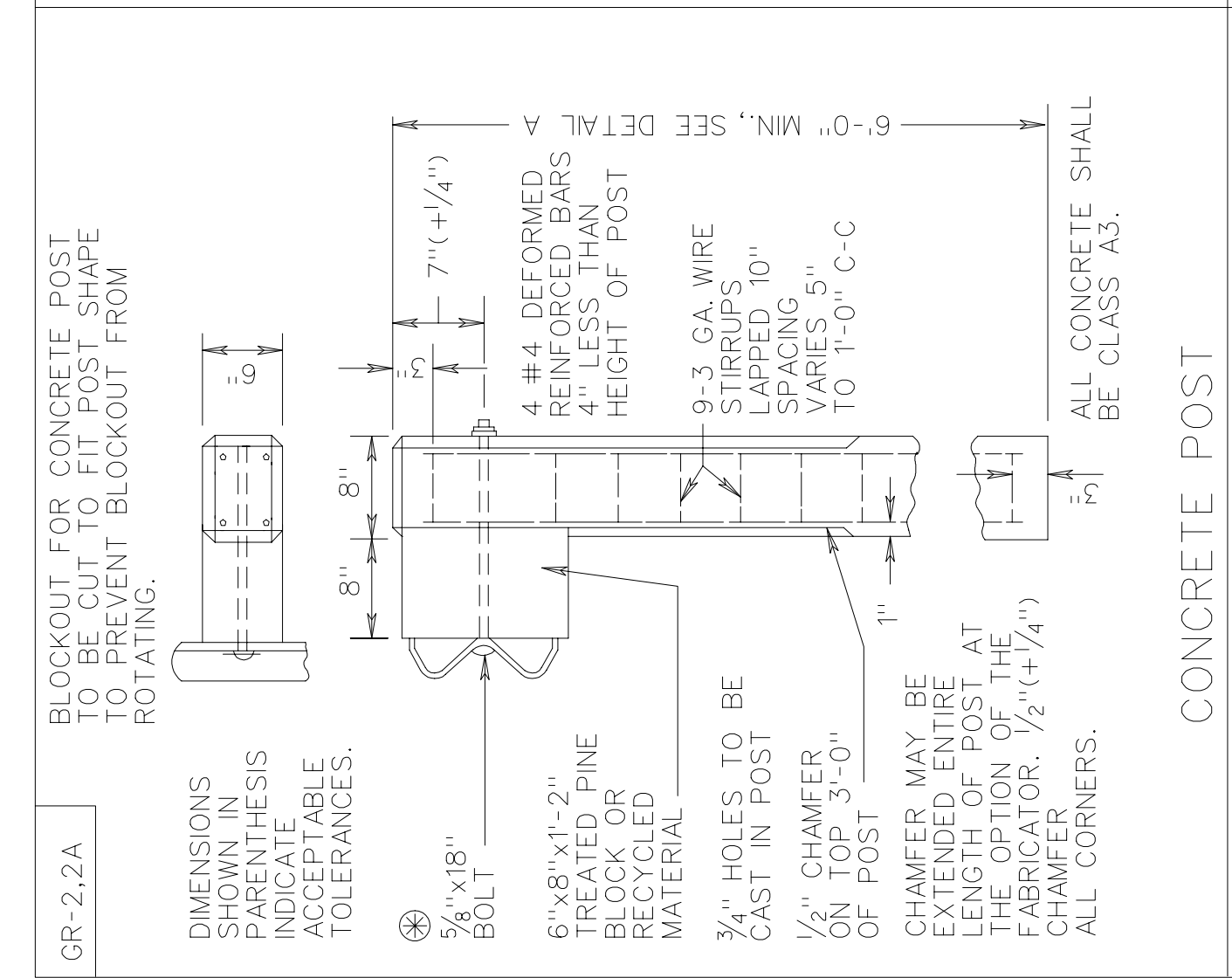


NOTES:
GUARDRAIL LOCATIONS SHOWN ON PLANS ARE APPROXIMATE ONLY AND CAN BE ADJUSTED DURING CONSTRUCTION IF AND AS DIRECTED BY THE ENGINEER.
FOR DETAILS OF POST AND BLOCKOUTS SEE SHEET NO. 501.05.
FOR DETAILS OF RAIL ELEMENT, RAIL SPLICE, JOINT, W-BEAM BACK-UP PLATE, AND ASSOCIATED HARDWARE SEE SHEET NOS. 501.01 AND 501.02.
RAIL ELEMENTS ARE FURNISHED SHOP CURVED FOR RADII BETWEEN 5 FEET AND 150 FEET.
ALL GUARDRAIL POSTS SHALL BE SET PLUMB. POST SHALL NOT BE SET WITH A VARIATION OF MORE THAN 1/8" FROM VERTICAL. W-BEAM, BLOCKOUTS, AND POSTS SHALL BE SET AND ALIGNED WITHOUT ALTERATION OR FORCE, AS PER SECTION 505 OF THE SPECIFICATIONS.
ALL GR-2 AND GR-2A RAIL SHALL BE MAINTAINED AT A HEIGHT OF 27 3/4" ± 3/4" TOLERANCE BASED OFF THE FINISHED GRADE, CENTERLINE ELEVATION, PAVEMENT CROSS SLOPE, OR SHOULDER SLOPE.
ALL W-BEAM RAILS SHALL BE LAPPED IN THE DIRECTION OF VEHICULAR TRAVEL FOR THE FINISHED ROADWAY.

SHEET 1 OF 2

STANDARD BLOCKED-OUT W BEAM GUARDRAIL (STRONG POST SYSTEM)
VIRGINIA DEPARTMENT OF TRANSPORTATION
REV. 7/05
501.04

SPECIFICATION REFERENCE	221 505
-------------------------	------------



NOTES:

- ALL BOLTS, NUTS, WASHERS, AND OTHER STEEL ITEMS ARE TO BE GALVANIZED.
- ALTERNATE TYPE POSTS AND BLOCKOUT MAY BE SUBSTITUTED FOR ANY BLOCKOUT WITH THE RESTRICTION OF THE SAME TYPE OF POST AND BLOCKOUT MUST BE USED IN ANY SINGLE RUN OF GUARDRAIL.
- FOR DETAILS OF GUARDRAIL ELEMENT SPLICE JOINT, HARDWARE, ETC. SEE SHEET NOS. 501.01 & 501.02.
- THE GUARDRAIL AND MEDIAN BARRIER COMPONENTS DEPICTED IN A.R.T.B.A. TECHNICAL BULLETIN NUMBER 268B MAY BE SUBSTITUTED IF INTERCHANGEABLE WITH THE STANDARDS FOR GUARDRAIL (GR) OR MEDIAN BARRIER (MB) AND APPROVED BY THE ENGINEER.
- DRIVE NAIL ON BOTH SIDES WITHIN 2" OF THE TOP OR BOTTOM OF BLOCKOUT AFTER 5/8" x 18 BOLT IS INSTALLED.

⊗ STANDARD WASHER TO BE USED ON LAST 50' OF RUN-OFF END ONLY UNLESS A STANDARD GR-11 RUN-OFF TERMINAL TREATMENT IS USED.

REVISED	STATE	FEDERAL AID PROJECT	ROUTE	STATE PROJECT	SHEET NO.
	VH.				

SHEET 2 OF 2

STANDARD BLOCKED-OUT W BEAM GUARDRAIL (STRONG POST SYSTEM) POST AND BLOCKOUT DETAILS
VIRGINIA DEPARTMENT OF TRANSPORTATION
REV. 9/06
501.05

SPECIFICATION REFERENCE	221 236 505
-------------------------	-------------------

REV. 9/06
SPECIAL DESIGN SECTION
DRAWING NO. A-87

PLAN NO.	PROJECT	FILE NO.	SHEET NO.
----------	---------	----------	-----------