

#0000
#0001

#REF00
#REV00

#REF00
#REV00

#REF00
#REV00

#REF00
#REV00

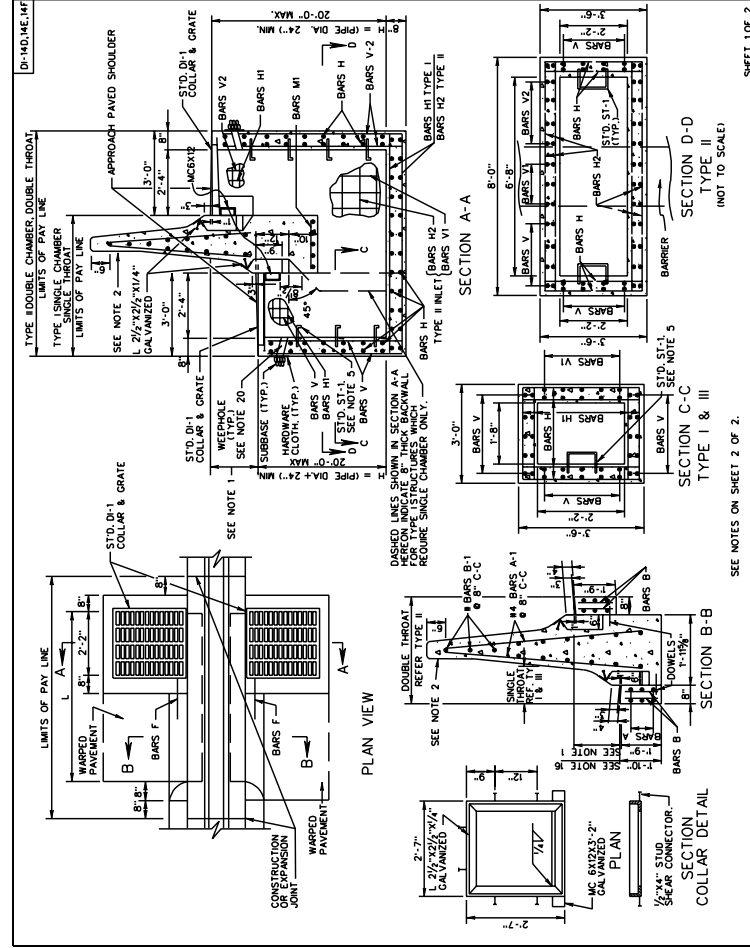
#REF00
#REV00

#REF00
#REV00

SURVEYED BY _____
SUPERVISED BY _____
DESIGNED BY _____

DESIGN FEATURES RELATING TO CONSTRUCTION OR TO REGULATION AND CONTROL OF TRAFFIC MAY BE SUBJECT TO CHANGE AS DEEMED NECESSARY BY THE DEPARTMENT

DATE	BY	REVISION



DI-HD, HE, HF
DI-HD, HE, HF

TYPE I DOUBLE CHAMBER DOUBLE THROAT
LIMITS OF PAY LINE
TYPE II SINGLE CHAMBER SINGLE THROAT
LIMITS OF PAY LINE

SEE NOTE 2
L 2 1/2" x 2 1/2" x 1/4"
GALVANIZED

APPROACH PAVED SHOULDER

STD. DI-1 COLLAR & GRATE

WEEP HOLE (TYP.)
SEE NOTE 20

SUBBASE (TYP.)
HARDWARE CLOTH (TYP.)
BARS V
BARS H
BARS W
BARS M
BARS I
BARS C
BARS D
BARS E
BARS F
BARS G
BARS J
BARS K
BARS L
BARS N
BARS O
BARS P
BARS Q
BARS R
BARS S
BARS T
BARS U
BARS V
BARS W
BARS X
BARS Y
BARS Z

DASHED LINES SHOWN IN SECTION A-A
WHICH INDICATE 6" THICK BACKWALL
REQUIRED SINGLE CHAMBER ONLY.

SECTION A-A
SECTION B-B
SECTION C-C
SECTION D-D

TYPE I & III
TYPE II

(NOT TO SCALE)

SEE NOTES ON SHEET 2 OF 2.

REVISION REFERENCE
233
302

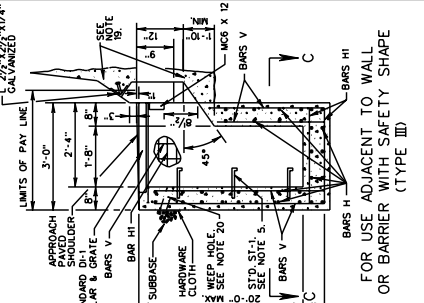
DI-HD, HE, HF
104-40

CONCRETE MEDIAN BARRIER DROP INLET
12" - 24" PIPE: DEPTH (H) = 20" MAX.

VIRGINIA DEPARTMENT OF TRANSPORTATION

TYPE I & III INLET		
MARK	SIZE	NO.
A-1	#4	(2X) L x 2
B-1	#4	11
H-1	#4	11
V-1	#5	12
V-2	#4	12
A	#4	12
SEE NOTE 15	#4	12
SEE NOTE 15	#4	12
DOWELS	#3	DOUBLE FOR TYPE I
SEE NOTE 15	#5	SEE NOTE 13
H	#5	(4X) H x 8
H-1	#5	(4X) H x 8
V	#4	(4X) H x 8
M-1	#5	5
M	#4	4
		12"

- NOTES
- VARIABLES GREATER THAN 0 TO 5" MAX. TYPE I CHAMBER.
 - FOR TYPE II CHAMBER, MEDIAN BARRIER, SEE STANDARD DRAWING 104-40.
 - GALVANIZED W-4 X 12 IS TO BE WELDED UNDER THE COLLAR AND EXTENDED INTO SIDEWALLS TO WITHIN 2" OF OUTSIDE FACE.
 - ALL REINFORCING BARS ARE TO BE GRADE 60 UNLESS OTHERWISE NOTED. ANY BARS IN CONFLICT WITH PIPE SHELL AND/ OR DOWELS SHALL BE CUT TO PROVIDE THE REQUIRED COVER.
 - DO NOT LOCATE STANDARD STAIRS ON CHAMBER WALLS THAT HAVE PRES WHEN POSSIBLE.
 - 8 DOWELS REQUIRED FOR DI-HF, MIN. ADDITIONAL FOOT DOWELS FOR EACH CHAMBER. SEE NOTE 13 FOR LENGTH OF DOWELS FOR EACH ADDITIONAL FOOT.
 - 12 BARS A REQUIRED FOR DI-HF.
 - LENGTH OF BARS A, DI-HF = $L \div 2$.
 - DO NOT USE WITH DI-HD.
 - USE 6 BARS F FOR DI-HF TYPE I.
 - DO NOT USE WITH TYPE III.
 - DO NOT USE WITH TYPE II.
 - USE 12 BARS F FOR EACH EXTRA FOOT OF DEPTH.
 - 24 BARS A ARE REQUIRED FOR DI-HF.
 - A MINIMUM 22" FLOORING DEPTH IS REQUIRED. SEE PLANS FOR LENGTH "L". SEE NOTE 15 FOR STRUCTURE LOCATIONS, DATA AND DIMENSIONS.
 - REFER TO PLANS FOR LOCATIONS OF PRES AND INVERTS.
 - FOR TYPE III, ACCOMMODATION OF CURVE SHALL BE INCLUDED IN COST OF WALL BARRIER.
 - FOR TYPE III, SEE WALL PLANS FOR WALL FOOTING DETAILS.
 - 3" DIAMETER WEEP HOLE WITH 12" X 12" PLASTIC HARDWARE CLOTH. NO 4" MESH HARDWARE CLOTH ANCHORED FIRMLY TO THE OUTSIDE OF THE STRUCTURE.



FOR USE ADJACENT TO WALL OR BARRIER WITH SAFETY SHAPE (TYPE III)

CONCRETE BARRIER DROP INLET
12" - 24" PIPE: DEPTH (H) = 20" MAX.

VIRGINIA DEPARTMENT OF TRANSPORTATION

REVISION REFERENCE
104.41

SHEET 2 OF 2
SHEET TOTAL REFERENCE
233
302