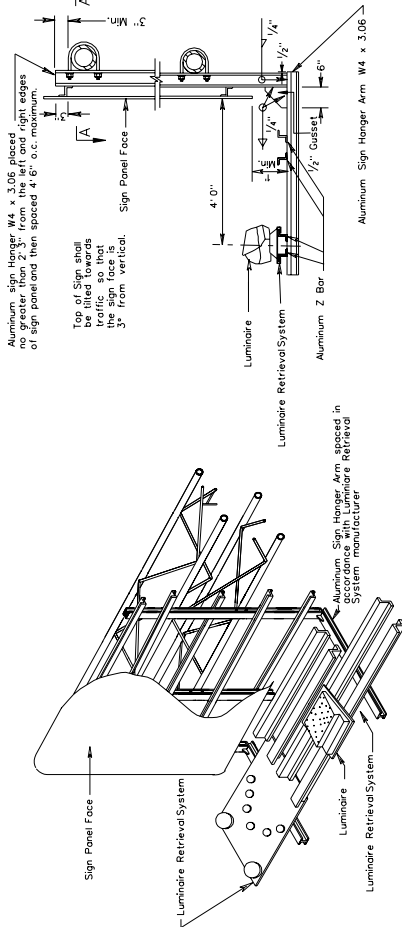


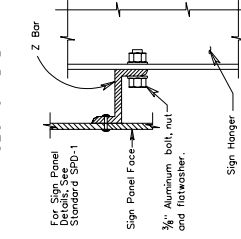
SUPERVISED BY _____
DESIGNED BY _____

SIGN HANGER ERECTION DETAIL WITH LUMINAIRE RETRIEVAL SYSTEM

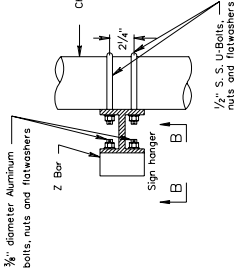
OSS-1



SECTION B-B



SECTION A-A



Note:
Luminaire Retrieval System, including electrical system, shall be fabricated using the SPD-1 Alternate Sign Panel Design, except as indicated on the plans. Spacing of hangers used to support the luminaire shall be in accordance with the manufacturer's recommendations. Luminaire and shall be of sufficient length to align with the vertical edge of the outside paved shoulder (top) or outermost sign luminaire whichever is greater. The opposite end of the luminaire shall be secured to the sign hanger arm. Luminaire Retrieval System required only where indicated on the plans.
Signs fabricated using the SPD-1 Alternate Sign Panel Design shall be fabricated using the SPD-1 Alternate Sign Panel Design, except as indicated on the plans. Spacing of hangers used to support the luminaire shall be in accordance with the manufacturer's recommendations. Luminaire and shall be of sufficient length to align with the vertical edge of the outside paved shoulder (top) or outermost sign luminaire whichever is greater. The opposite end of the luminaire shall be secured to the sign hanger arm. Luminaire Retrieval System required only where indicated on the plans.
Signs fabricated using the SPD-1 Alternate Sign Panel Design shall be fabricated using the SPD-1 Alternate Sign Panel Design, except as indicated on the plans. Spacing of hangers used to support the luminaire shall be in accordance with the manufacturer's recommendations. Luminaire and shall be of sufficient length to align with the vertical edge of the outside paved shoulder (top) or outermost sign luminaire whichever is greater. The opposite end of the luminaire shall be secured to the sign hanger arm. Luminaire Retrieval System required only where indicated on the plans.

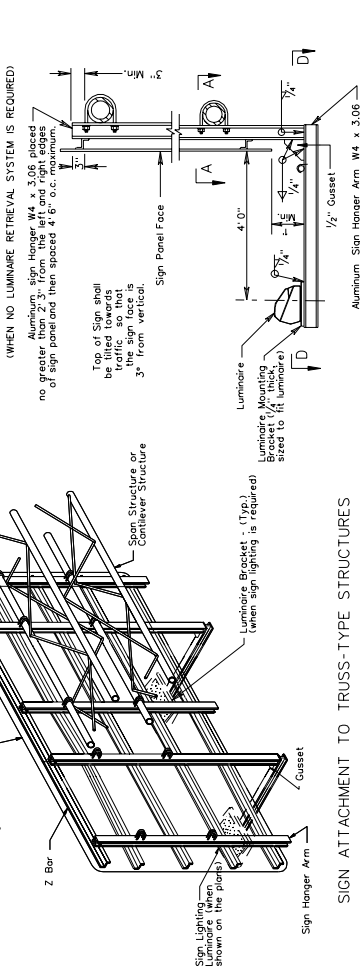
TYPICAL DETAILS FOR OVERHEAD SIGN STRUCTURES

REV. 1/04
REV. 5/04
1301.74

VIRGINIA DEPARTMENT OF TRANSPORTATION

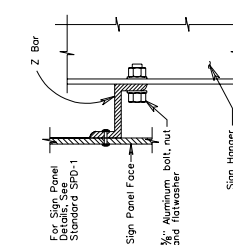
OSS-1

SIGN HANGER ERECTION DETAIL WITH LUMINAIRE RETRIEVAL SYSTEM (WHEN NO LUMINAIRE RETRIEVAL SYSTEM IS REQUIRED)

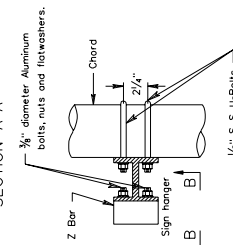


Note:
Luminaires required only where indicated on the plans. Luminaires to be attached to mounting bracket with 4 3/8" dia. galvanized cap screws, lockwashers and nuts. Signs fabricated using the SPD-1 Alternate Sign Panel Design shall be fabricated using the SPD-1 Alternate Sign Panel Design, except as indicated on the plans. Spacing of hangers used to support the luminaire shall be in accordance with the manufacturer's recommendations. Luminaire and shall be of sufficient length to align with the vertical edge of the outside paved shoulder (top) or outermost sign luminaire whichever is greater. The opposite end of the luminaire shall be secured to the sign hanger arm. Luminaire Retrieval System required only where indicated on the plans.

SECTION B-B



SECTION A-A



TYPICAL DETAILS FOR OVERHEAD SIGN STRUCTURES

REV. 5/04
REV. 1/04
1301.75

VIRGINIA DEPARTMENT OF TRANSPORTATION

DESIGN FEATURES RELATING TO CONSTRUCTION OR TO REGULATION AND CONTROL OF TRAFFIC MAY BE SUBJECT TO CHANGE AS DEEMED NECESSARY BY THE DEPARTMENT

REVISION	STATE	FEDERAL NO PROJECT	ROUTE	STATE PROJECT	SHEET NO.
	VA.				

PLAN NO.	PROJECT	FILE NO.	SHEET NO.