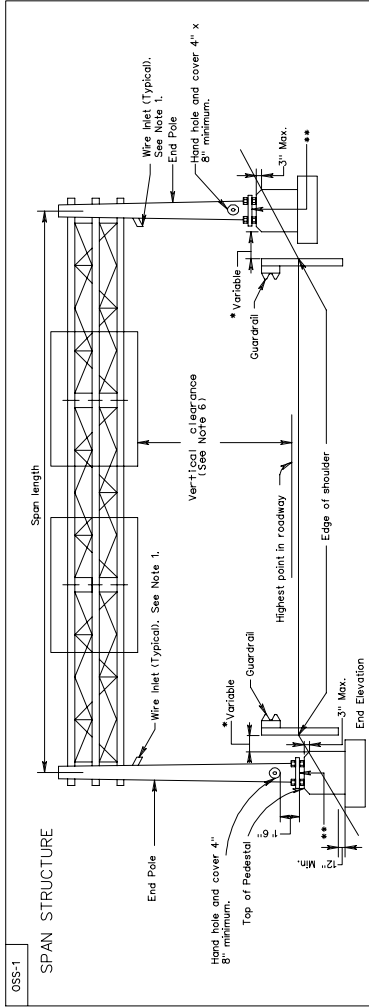


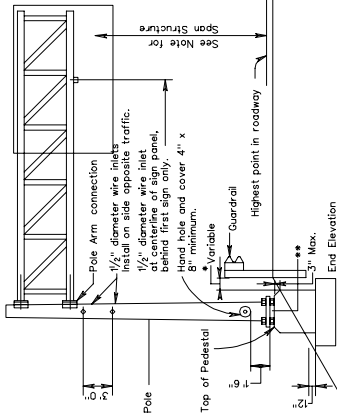
SURVEYED BY \_\_\_\_\_  
SUPERVISED BY AAA  
DESIGNED BY BBB

DESIGN FEATURES RELATING TO CONSTRUCTION OR TO REGULATION AND CONTROL OF TRAFFIC MAY BE SUBJECT TO CHANGE AS DEEMED NECESSARY BY THE DEPARTMENT

REVISION	STATE	FEDERAL AID	ROUTE	STATE	SHEET NO.
	PROJECT		PROJECT		
	VA.				



CANTILEVER STRUCTURE



NOTES:

1. 1/2" diameter wire inlets shall be provided at the following locations:
  - A. On span structures on the front leg of end pole 12" below bottom chord.
  - B. On cantilever structures on pole 12" below bottom chord.
  - C. On cantilever structures on pole 12" below bottom chord at centerline behind first sign panel from each end pole.
  - D. On cantilever structures below bottom chord at centerline behind first sign panel from pole.
2. All unused wire inlets shall be capped water tight.
3. Distance shall be no less than the minimum indicated in Standard GR-NS.
4. No mortar, grout, or concrete shall be placed between bottom of base plate and top of pedestal.
5. The maximum space between the bottom of the base plate and the top of the foundation shall be no more than the diameter of the anchor bolt plus one inch.
6. Vertical clearance for overhead and bridge mounted sign structures shall be no less than 5.8 meters (19 feet) above the roadway surface. The minimum clearance shall be the vertical clearance of no less than 5.3 meters from the bottom of the assembly to the crown of the roadway, unless otherwise specified on the plans. The minimum clearance shall be the vertical clearance of no less than 5.3 meters from the bottom of the assembly to the crown of the roadway.
7. All poles/heights of overhead sign structures including utility structures shall have a minimum height of 10 meters (33 feet) above the roadway surface. Adhesive anchors with epoxy or non-shrink grout shall not be allowed.

TYPICAL DETAILS FOR OVERHEAD SIGN STRUCTURES

VIRGINIA DEPARTMENT OF TRANSPORTATION

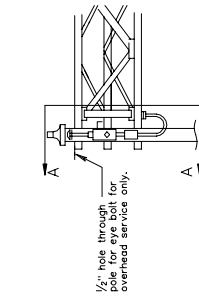
REV. 2/06  
REV. 7/05  
REV. 4/04  
REV. 1/04  
130172

OSS-1

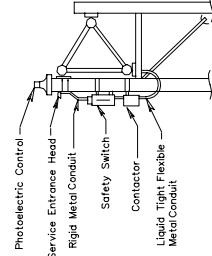
ELECTRIC DETAILS FOR SIGN LIGHTING

SPAN SIGN STRUCTURE

FRONT VIEW

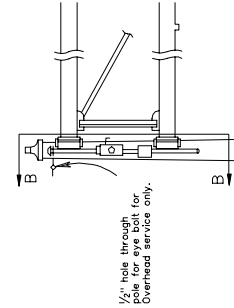


SECTION A-A

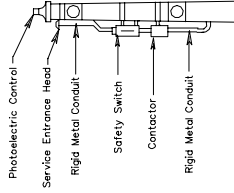


CANTILEVER SIGN STRUCTURE

FRONT VIEW



SECTION B-B



Note:

A safety switch shall be installed on all sign structures requiring electrical power. Electrical service for sign structures not controlled by a photocell and a photocell-controlled contactor to control the electrical power to luminaires. The contactor shall be in a NEMA 3R enclosure within 24 inches of the safety switch.

All conduit located in or on overhead sign structure shall be 3/4" minimum.

TYPICAL DETAILS FOR OVERHEAD SIGN STRUCTURES

VIRGINIA DEPARTMENT OF TRANSPORTATION

REV. 7/05  
REV. 1/04  
130173

REV. 2/06  
SPECIAL DESIGN SECTION  
DRAWING NO. A - 154

PLAN NO.	PROJECT	FILE NO.	SHEET NO.