

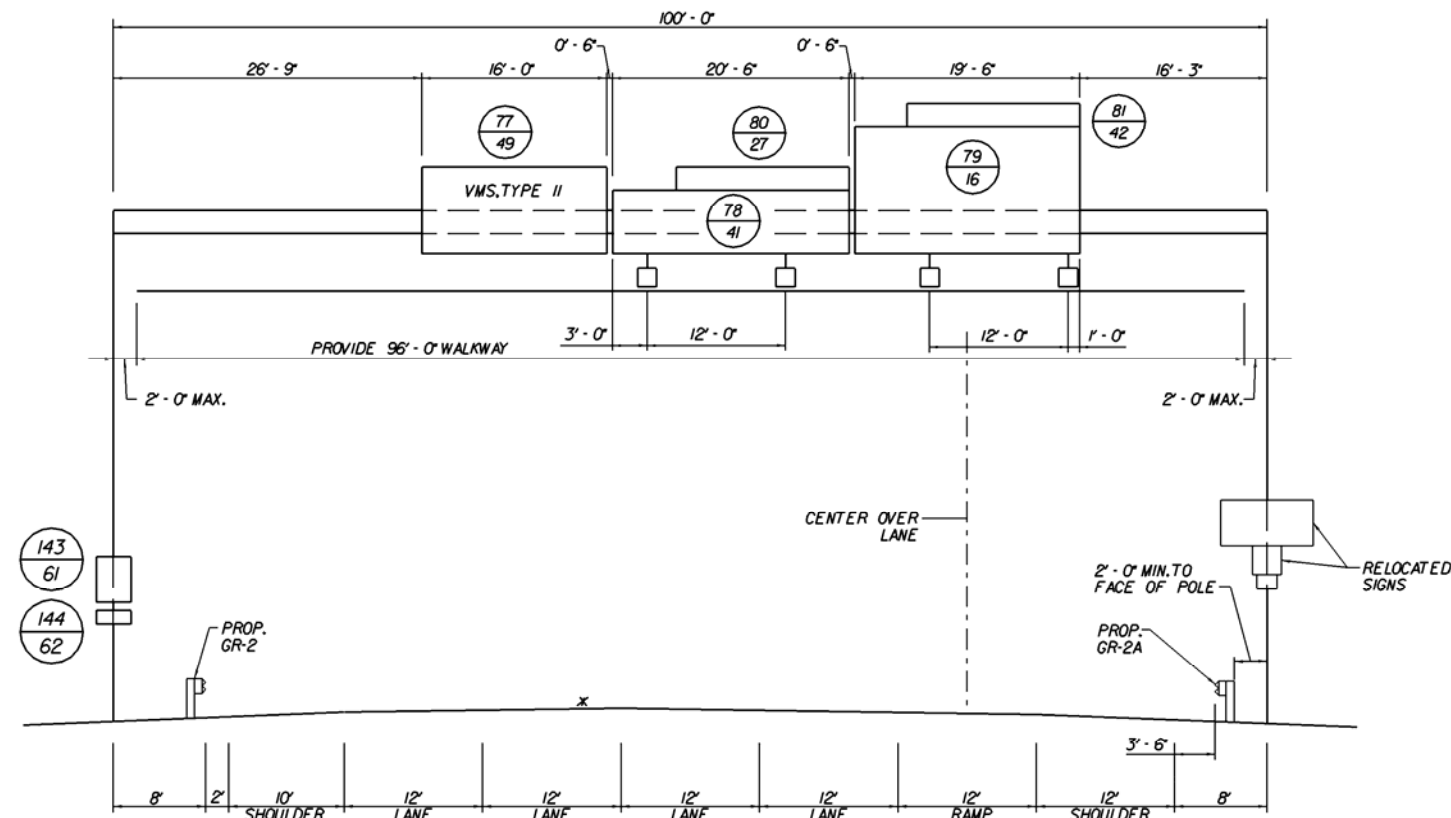
# EXAMPLE OF OVERHEAD SIGN STRUCTURE ELEVATION DETAILS

DESIGN FEATURES RELATING TO CONSTRUCTION OR TO REGULATION AND CONTROL OF TRAFFIC MAY BE SUBJECT TO CHANGE AS DEEMED NECESSARY BY THE DEPARTMENT

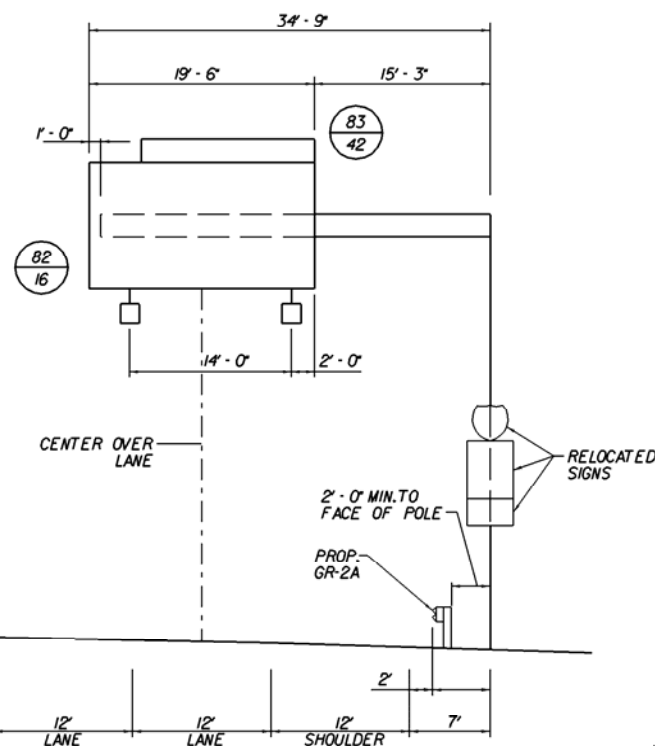
REVISED	FHWA REGION	STATE	FEDERAL AID PROJECT	ROUTE	STATE PROJECT	SHEET NO.

## Section II - Signing

Appendix IIA-8



OVERHEAD STRUCTURE LOCATION 29  
 STA.1020-70 W.B. MAINLINE CONST.



OVERHEAD STRUCTURE LOCATION 30  
 STA.1012-75 W.B. MAINLINE CONST.

### OVERHEAD SIGN SUPPORT DATA SUMMARY

OVERHEAD SIGN SUPPORT	SPAN LENGTH	SIGN PANEL				SIGN PANEL ATTACHMENT DETAILS			ALTERNATE SIGN PANEL ATTACHMENT DETAILS			ILLUMINATING FIXTURES									
		LOCATION NO.	TYPE	TEXT NO.	SIGN NO.	W	H	ZEE BAR (SIZE B)		STIFFENER (LARGE)			NO.	SPACING (C.C.)							
								c *	d **	NO.	c *	d **			NO.						
29	SPAN	100'-0"	49	77	16'-0"	7'-6"	SEE NOTE 6	6"	1'-0"	2	6"	1'-0"	2	2	12'-0"						
			27	80	15'-0"	2'-0"															
			41	78	20'-6"	5'-6"										1'-3"	3'-0"	2	3"	1'-3"	5
			42	81	15'-0"	2'-0"										6"	1'-0"	2	6"	1'-0"	2
			16	79	19'-6"	11'-0"										1'-6"	4'-0"	3	5"	1'-8"	7
30	CANT.	33'-9"	42	83	15'-0"	2'-0"	6"	1'-0"	2	6"	1'-0"	2	2	14'-0"							
			16	82	19'-6"	11'-0"	1'-6"	4'-0"	3	5"	1'-8"	7	2	14'-0"							

□ TYPICAL 150 WATT H.P.S. SIGN LIGHT.

\* DISTANCE FROM EDGE  
 \*\* SPACING (C.C.)

#### NOTES:

- SINGLE CHORD-DOUBLE POLE SPAN STRUCTURES ARE SHOWN AS EXAMPLES ONLY. TRI-CHORD OR FOUR CHORD TRUSS AND DOUBLE POLE END FRAMES WILL BE NECESSARY SUBJECT TO CONDITIONS.
- SPAN LENGTHS AND END FRAME HEIGHTS ARE TO BE FIELD CHECKED PRIOR TO FABRICATION OF STRUCTURES.
- THE CONTRACTOR SHALL DESIGN ALL OVERHEAD SIGN SUPPORTS AND FOUNDATIONS IN ACCORDANCE WITH DESIGN REQUIREMENTS AND SHALL SUBMIT TO THE ENGINEER ALL NECESSARY DETAILS AND CALCULATIONS WHICH ARE REQUIRED FOR ITS DESIGN. THE CONTRACTOR SHALL FIELD MEASURE THE SIZE OF EXISTING SIGNS TO BE RELOCATED, SPAN LENGTHS AND END FRAME HEIGHTS BEFORE SUBMITTING ALL NECESSARY DETAILS, CALCULATIONS AND SHOP DRAWINGS. ANY ADJUSTMENT TO THE STRUCTURE SIZES UP TO 5 FEET WILL BE AT NO ADDITIONAL COST TO THE DEPARTMENT.
- ADDITIONAL OVERHEAD SIGN STRUCTURE DETAILS ARE SHOWN IN THE VIRGINIA DEPARTMENT OF TRANSPORTATION, ROAD AND BRIDGE STANDARDS, SECTION 130I.
- EXISTING ZEE BARS OR STIFFENER SIGN SUPPORTS SHALL BE RELOCATED WITH EXISTING SIGN PANEL.
- BAR SUPPORTS FOR VARIABLE MESSAGE SIGNS SHALL BE DESIGNED BY THE CONTRACTOR.
- THE SIZE AND WEIGHT OF THE VMS SHALL BE VERIFIED WITH THE VMS MANUFACTURER/SUPPLIER PRIOR TO THE PREPARATION OF SHOP DRAWINGS AND SHALL BE DOCUMENTED IN THE SHOP DRAWING SUBMITTALS.

#### DESIGNING NOTES:

THE TYPE OF SIGNING TO BE INSTALLED ON THE STRUCTURE DETERMINES THE NEED FOR WALKWAY AND / OR LUMINAIRE RETRIEVAL SYSTEMS. IT IS POSSIBLE TO HAVE BOTH SYSTEMS IF BOTH STATIC AND VMS SIGNS ARE BEING INSTALLED ON THE SAME STRUCTURE. THIS SHOULD BE DETERMINED IN THE PRELIMINARY MEETINGS WITH THE DISTRICT AGENCY'S INVOLVED WITH THE PROJECT. WHEN WALKWAY IS INSTALLED IT SHALL BE NO MORE THAN TWO FEET FROM THE UPRIGHT SUPPORT ON THE SIDE OF ACCESS.

THE POWER SOURCE FOR LIGHTING THE SIGNS NEEDS TO BE COORDINATED WITH THE LOCAL POWER REPRESENTATIVE. A MEETING WITH THE REPRESENTATIVE IS REQUIRED TO DETERMINE THE POWER SUPPLY SOURCE LOCATION AND THE ROUTING OF THE SERVICE TO THE SIGN LOCATION. THIS WILL INCLUDE INDICATING THE TYPE OF POWER SOURCE TO BE INSTALLED, SIZE OF WIRE AND TYPE AND LOCATION OF JUNCTION BOXES. ON OCCASIONS THE SIGN LIGHTING WILL BE FED FROM THE ROADWAY LIGHTING POWER SOURCE. COORDINATION IS REQUIRED TO PROVIDE THE NECESSARY EQUIPMENT (EG. WIRE, CONDUIT AND JUNCTION BOXES) TO MAKE THE POWER CONNECTION TO THE SIGN STRUCTURE.

LUMINAIRE SPACING IS DETERMINED BY A LIGHTING ANALYSIS OR BY USING THE SIGN LIGHTING SPACING CHART IN APPENDIX IIB, IIB-5.

( USE NOTES ONLY APPLICABLE TO PROJECT )

\* ACTUAL CROSS SECTIONS SUPPLIED BY THE ROADWAY DESIGNER SHALL BE USED IN THE CREATION OF THE SIGN ELEVATION DETAILS.

ROADWAY SIGNING  
 OVERHEAD SIGN STRUCTURE  
 ELEVATION DETAILS

PLAN NO.	PROJECT	FILE NO.	SHEET NO.
A			