

"Exceptions, feet (meters) - Listing of exception lengths where applicable "Length, feet (meters), miles (kilometers)" - Listing of lengths of various roadway sections - to be shown to the nearest hundredth of a foot (meter) and nearest thousandth of a mile (kilometer); "Length Including Bridges", "Length Excluding Bridges", listing of bridge lengths based on the same line as the roadway lengths and affecting the roadway lengths; "Length Including Box Culverts", "Length Excluding Box Culverts", listing of box culvert lengths based on the same line as the roadway lengths and affecting the roadway lengths (Only where traffic is placed directly on the top slab of the box culvert). All "B" and "D" projects are to be shown in the length tabulation block, but are to be included in the headings of the length columns only where they affect the roadway project length.

"Type Project" - Listing of project types such as: "Preliminary Engineering.", "Right of Way", "Grading", "Paving", "Construction", "Bridge", etc.

"Description" - Listing of various section descriptions. See example:

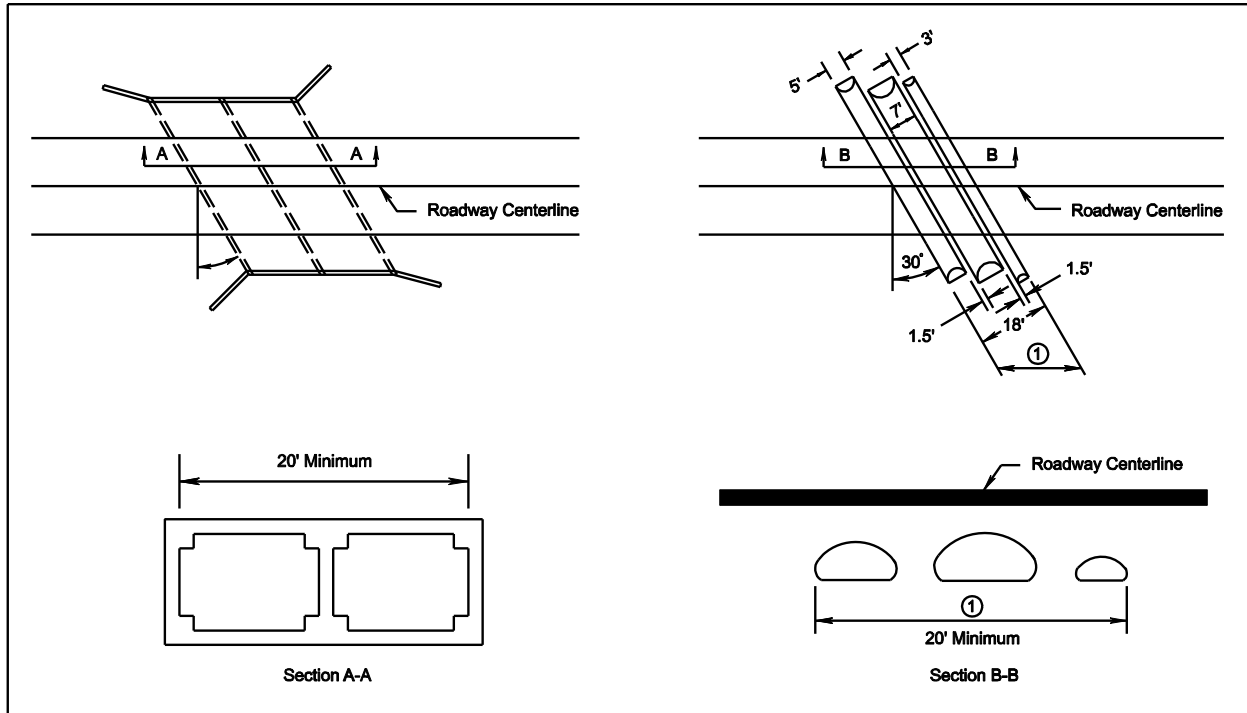
| STATE PROJECT NO. | SECTION | FEDERAL AD PROJECT NO. | TYPE CODE | PPMS NO. | EQUALITIES |  | LENGTH INCLUDING BRIDGES |       | LENGTH INCLUDING BRIDGES |       | TYPE PROJECT | DESCRIPTION                                   |
|-------------------|---------|------------------------|-----------|----------|------------|--|--------------------------|-------|--------------------------|-------|--------------|---|
|                   |         |                        |           |          | FEET       |  | FEET                     | MILES | FEET                     | MILES |              |   |
| 0668-071-202      | C-502   | RS-425 ( )             | F000      | 559      | 205.59     |  | 18,793.06                | 3.559 | 18,461.88                | 3.496 | CONSTR.      | From: 0155 MI. E. Rte. 640                    |
|                   |         |                        |           |          |            |  |                          |       |                          |       |              | To: 0138 MI. W. Rte. 807                      |
|                   | B-601   | RS-425 ( )             | X020      | 425      | 3.311      |  | 0.063                    |       |                          |       |              | Bridge Carrying Rte. 668 over Peachtree Creek |
|                   |         |                        |           |          |            |  |                          |       |                          |       |              |   |
|                   |         |                        |           |          |            |  |                          |       |                          |       |              |   |

All drainage structures measuring over 20 feet(6 m) along the roadway centerline between the inner faces of the outer walls (as defined by 23 CFR 650 © National Bridge Standards, Section 650.301, Application of Standards) are classed as major structures and are to be set up as separate projects with separate lengths. Multiple lines (two or more pipes) will be considered a "major structure" when, if measuring along the roadway centerline, the distance between the interior of the outer most pipe walls exceeds 20 feet (6 m)\*. The Structure & Bridge Division should be consulted in instances where the application of this guideline requires interpretation. The stations and length used on the plans for culverts measuring over 20 feet (6 m) shall be based on the distance between the back of the outside walls, not on the distance between the faces of same. Separate quantities are to be shown on the plans and estimates for these structures. In cases where the roadway and surfacing is carried over but is not a part of the structure, the roadway and surfacing quantities are not separated on the plans and estimates, but are included in the roadway project.

If no work is proposed on an existing major structure, it should not be set up as a separate project, but shown as an exception to the roadway project. Minor structures of less than 20 feet (6 m), however, should never be shown as exceptions.

---

\* Rev. 7/09



"D" numbers shall also be assigned to all drainage structures, single and multiple lines (two or more) with openings equal to or greater than 36 S.F. The Drainage Designer will communicate the number of structures meeting this requirement to the Roadway Designer and he or she will communicate this information to the Project Manager\*.

### "B" PREFIX

Special Design Bridges  
 Standard Slab Span Bridges  
 Special Design Box Culverts  
 Special Design Rigid Frames  
 Special Design Arches  
 Special Design Three-sided Structures

### "D" PREFIX

Standard Box Culverts  
 Single Line Pipe Culverts (openings  $\geq$  36 SF)  
 Multiple Line Pipe Culverts (openings  $\geq$  36 SF)

\* Rev. 7/09

The identification numbers "B" or "D" \* are to be requested by the Project Manager using the Project Pool and will be assigned initially in sequence, without regard to the prefix "B" or "D"; i.e. B-601, B-602, D-603, D-604, B-605, etc. Construction Type Codes for roadway and surface type, bridge type (includes culverts - any type box or culvert), and miscellaneous type construction are required for each construction section on all projects, e.g., C-501, B-601, D-602, C-502, L-801, S-901, etc. The Type Codes, as noted in Figure 2E-14, are required on the plans and are to be shown on the title sheet in the project length tabulation block adjacent to the Federal-Aid Project number block (regardless of whether the project is federally funded) for the applicable Section Number.

No Plan and Minimum Plan project Type Codes are to be shown on the title or cover sheet and are to be handled in variations of the above procedure, as required. This is also to apply to project plans, such as Landscape, Signs, etc., prepared by other divisions, that do not require road plans.

The Bridge Type Code is noted on the bridge plan cover sheet in the upper right hand border beside the project block and also on their final review transmittal Form B-45A or B-45B adjacent to the copy transmittal listing to the FHWA as - Bridge Type Code: X.

The Type Code is also to be shown in the Engineering Estimate.

---

\* Rev. 7/09