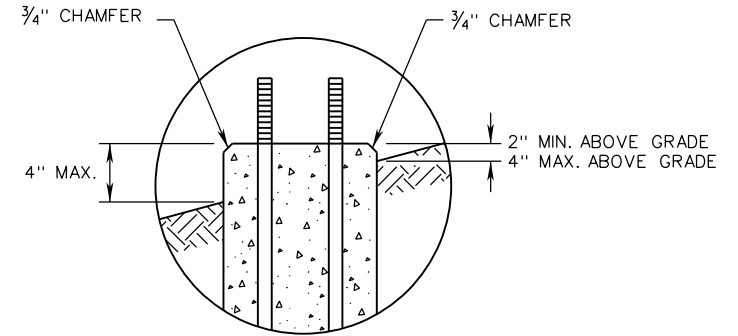
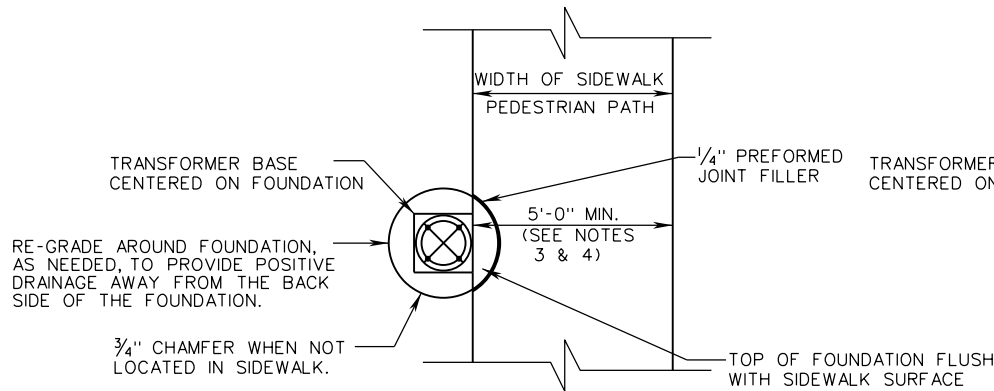


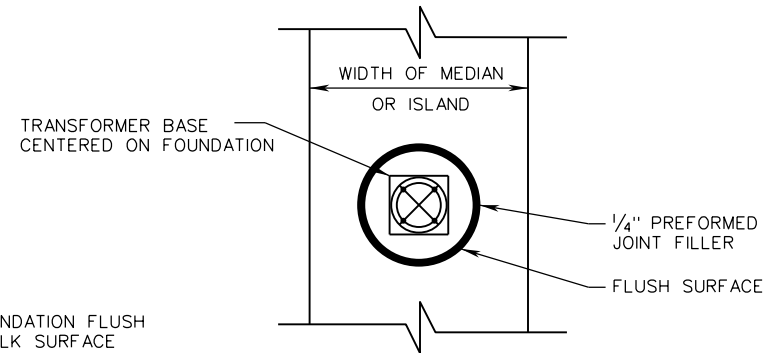
**DETAIL A
SIDEWALK OR CONCRETE MEDIAN/ISLAND**



**DETAIL B
BREAKAWAY BASE**



**DETAIL A PLAN VIEW
AT SIDEWALK / PEDESTRIAN PATH**



**PLAN VIEW
OF DETAIL A
AT CONCRETE MEDIAN/ISLAND**

NOTES:

1. WHEN FOUNDATION IS ADJACENT TO THE BACK EDGE OF SIDEWALK BUT NOT WITHIN THE SIDEWALK, THE TOP OF THE FOUNDATION SHALL BE ELEVATED 2 INCHES MINIMUM ABOVE THE SIDEWALK GRADE.
2. ROUND FOUNDATIONS ARE SHOWN, HOWEVER SQUARE FOUNDATIONS ARE ACCEPTABLE AND SHALL FOLLOW THE SAME REQUIREMENTS.
3. THE TOP OF FOUNDATION SHALL BE FLUSH WITH THE SIDEWALK SURFACE WHEN INCLUDED IN THE 5'-0" MINIMUM SIDEWALK/ PEDESTRIAN PATH.
4. THE 5'-0" MINIMUM SIDEWALK/ PEDESTRIAN PATH WIDTH WILL BE MEASURED FROM THE BOTTOM OF THE TRANSFORMER BASE.

SPECIFICATION REFERENCE 700	A COPY OF THE ORIGINAL SEALED AND SIGNED DRAWING IS ON FILE IN THE CENTRAL OFFICE. PEDESTAL POLE AND FOUNDATION INSTALLATION DETAILS VIRGINIA DEPARTMENT OF TRANSPORTATION	VDOT ROAD AND BRIDGE STANDARDS REVISION DATE 09/18 SHEET 2 OF 2 1302.31
---------------------------------------	--	--