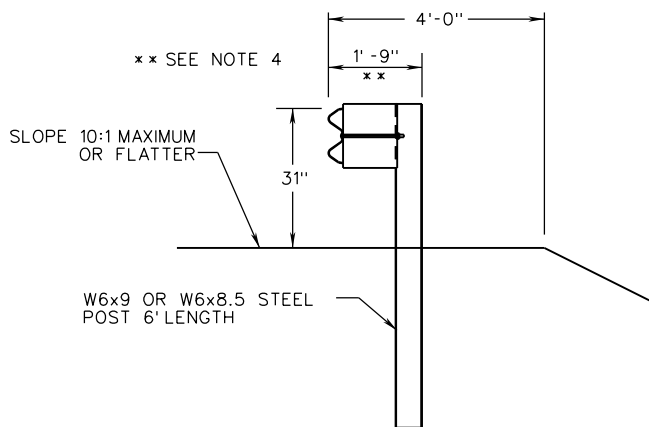
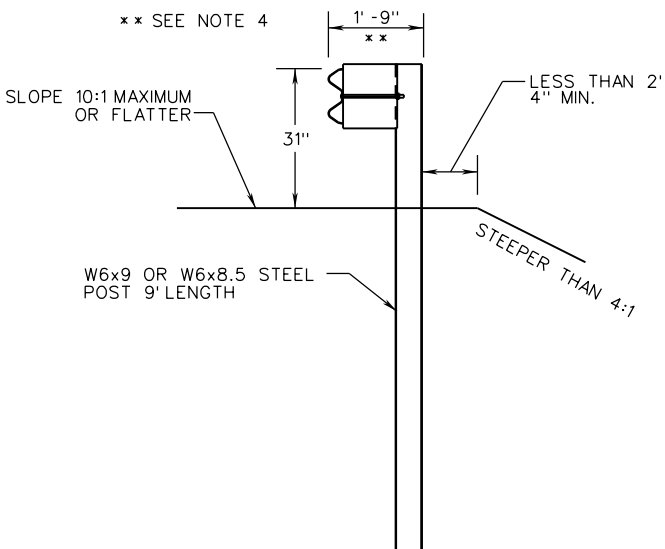


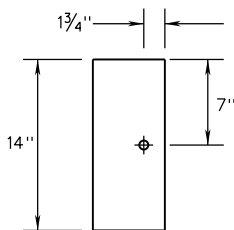
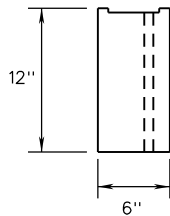
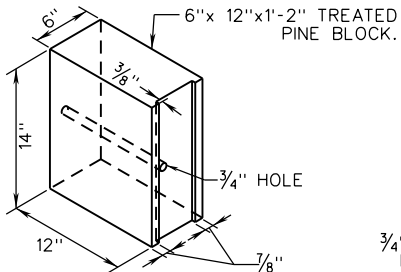
GR-MGS1, 1A



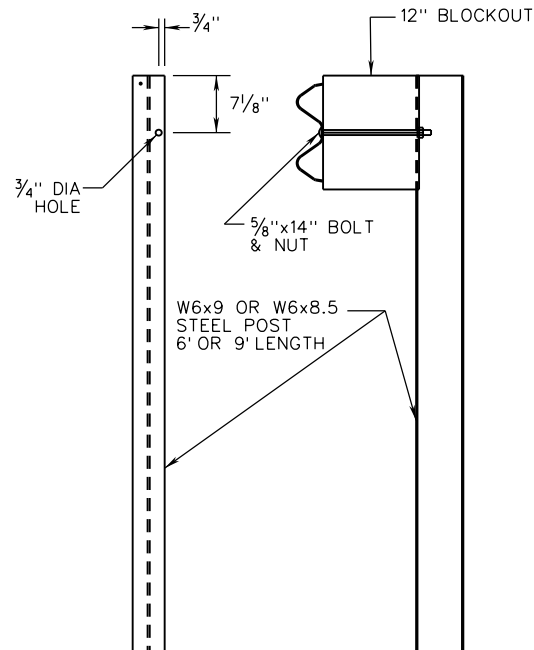
STANDARD INSTALLATION
6' STEEL POST



GUARDRAIL INSTALLATION
SITES REQUIRING 9'
GUARDRAIL POSTS



6" WIDE ROUTED
WOOD BLOCKOUT



STEEL POST

NOTES:

1. ALL BOLTS, NUTS, WASHERS, AND OTHER STEEL ITEMS ARE TO BE GALVANIZED.
2. BLOCKOUTS OTHER THAN SHOWN SHALL BE A VDOT APPROVED PRODUCT MEETING MASH TESTING CRITERIA. BLOCKOUTS SHALL BE FROM THE VDOT APPROVED PRODUCTS LIST. APPROVED BLOCKOUTS MAY BE INTERCHANGED ON ANY ONE PROJECT WITH THE RESTRICTION THAT THE SAME TYPE OF BLOCKOUT MUST BE USED IN ANY SINGLE RUN OF GUARDRAIL.
3. WOOD BLOCKOUTS SHALL BE TREATED WITH A WOOD PRESERVATIVE IN ACCORDANCE WITH THE SPECIFICATIONS.
4. DIMENSION MAY VARY PLUS OR MINUS 1/4" DUE TO MANUFACTURING TOLERANCES IN GUARDRAIL COMPONENTS.

A COPY OF THE ORIGINAL SEALED AND SIGNED DRAWING IS ON FILE IN THE CENTRAL OFFICE.

MIDWEST GUARDRAIL SYSTEM
(STANDARD AND REDUCED POST SPACING)

VIRGINIA DEPARTMENT OF TRANSPORTATION

SPECIFICATION
REFERENCE

221
236
505



ROAD AND BRIDGE STANDARDS

SHEET 2 OF 2 REVISION DATE

506.05

NEW 02/17