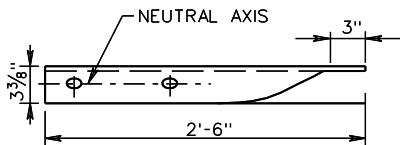
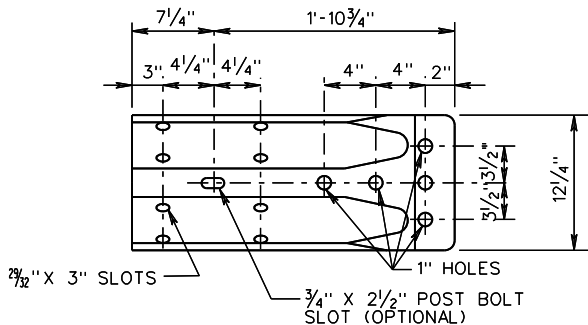


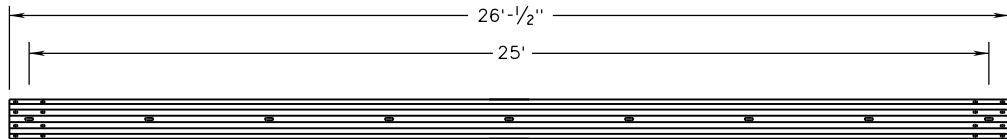
MGS-HDW



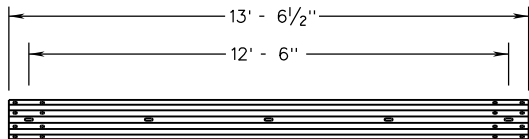
LAP IN DIRECTION OF TRAFFIC AT SPLICE JOINT.



W BEAM TERMINAL CONNECTOR



9 3/4" x 2 1/2" SLOTTED HOLES AT 3'-1 1/2" SPACING
STANDARD 25' W-BEAM SECTION

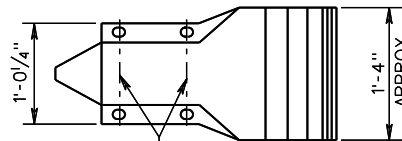
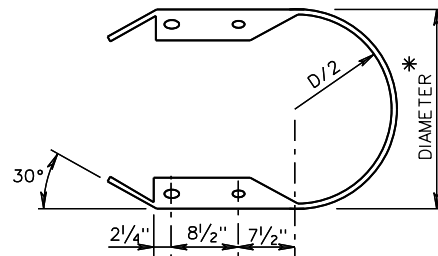


5 3/4" x 2 1/2" SLOTTED HOLES AT 3'-1 1/2" SPACING

STANDARD 12'-6" W-BEAM SECTION

NOTES:

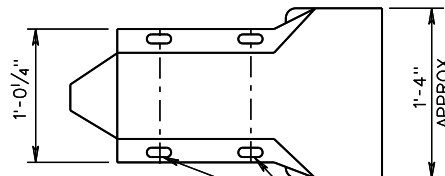
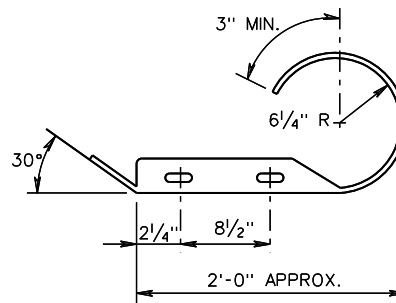
ALL HARDWARE IS TO BE GALVANIZED IN ACCORDANCE WITH THE SPECIFICATIONS.



3/8" SLOTTED HOLES 2 3/8" X 1 1/8"

* STANDARD DIMENSIONS OF 12 1/2", 24" AND 30" ARE SUGGESTED.

W BEAM END SECTION (BUFFER)



3/8" X 1 1/8" SPLICE BOLT SLOT

W BEAM END SECTION (ROUNDED)



ROAD AND BRIDGE STANDARDS

A COPY OF THE ORIGINAL SEALED AND SIGNED DRAWING IS ON FILE IN THE CENTRAL OFFICE.

MGS STANDARD GUARDRAIL HARDWARE

SPECIFICATION REFERENCE

SHEET 2 OF 3

REVISION DATE

221
505

506.02

NEW 02/17

VIRGINIA DEPARTMENT OF TRANSPORTATION