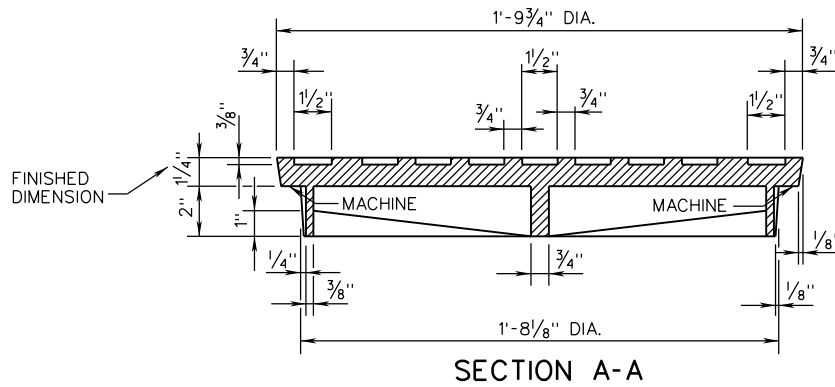
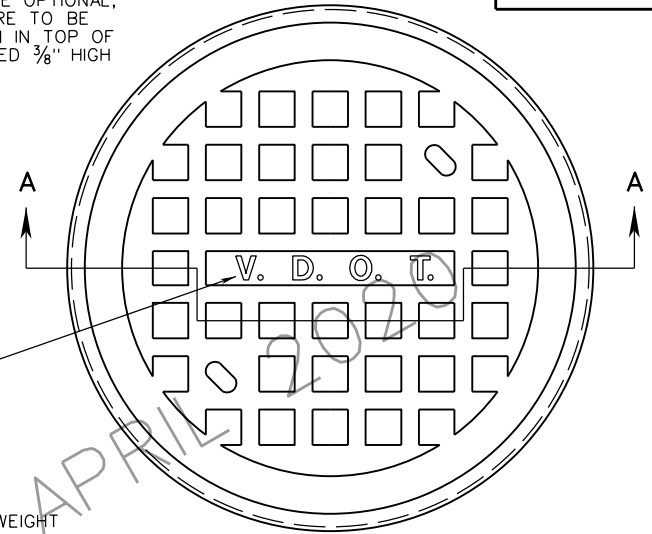


NOTES:  
THE LETTERS V.D.O.T. ARE OPTIONAL,  
IF USED THE LETTERS ARE TO BE  
CAST IN THE DEPRESSION IN TOP OF  
COVER 1" WIDE AND RAISED  $\frac{3}{8}$ " HIGH  
AS SHOWN.

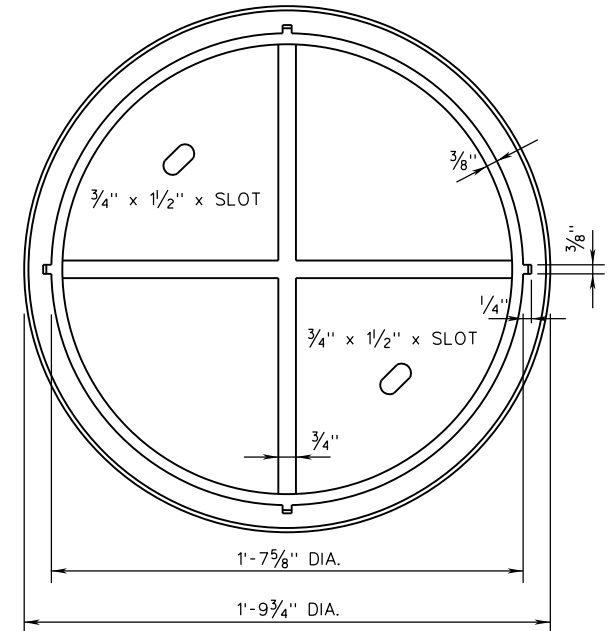
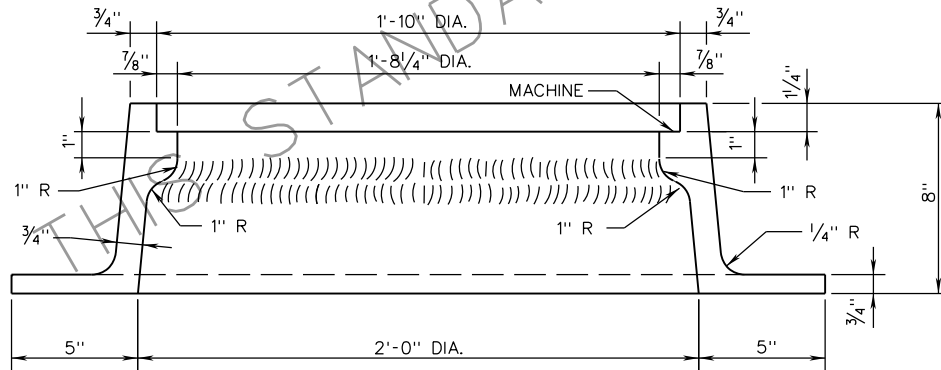


LETTERING  
OPTIONAL



APPROXIMATE WEIGHT

CAST IRON  
COVER  $137 \pm 7$  LBS.  
FRAME  $235 \pm 12$  LBS.



THIS STANDARD VOIDED APRIL 2020

SPECIFICATION REFERENCE
224 302

# STANDARD MANHOLE FRAME AND COVER

VIRGINIA DEPARTMENT OF TRANSPORTATION



ROAD AND BRIDGE STANDARDS

REVISION DATE SHEET 3 OF 5

VOID APRIL 2020

106.03