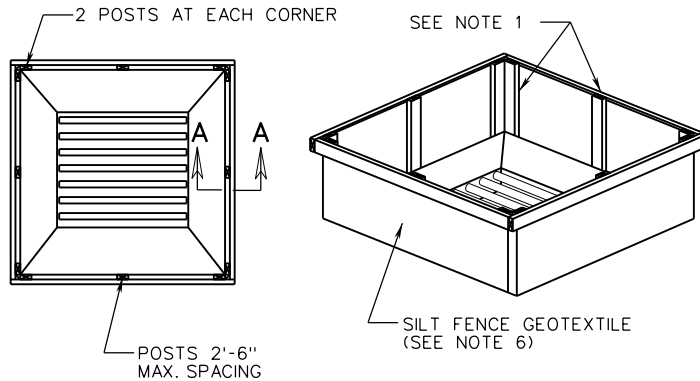
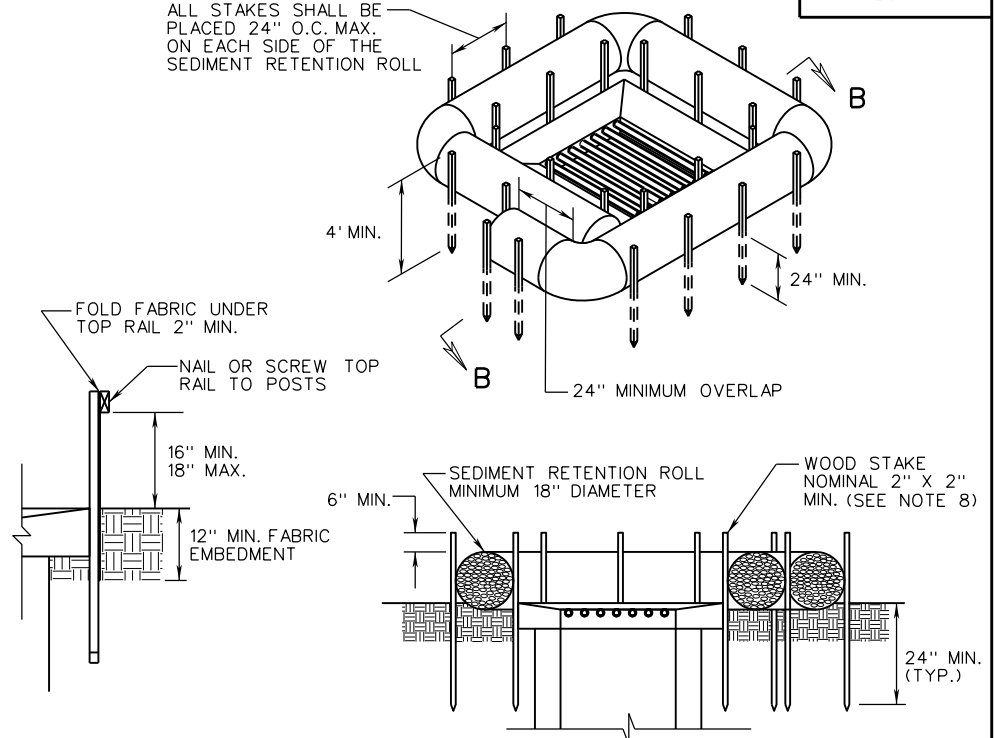


INLET PROTECTION DIRECTIONAL FLOW WITH CONCRETE GUTTER (TYPE A)



INLET PROTECTION MULTIDIRECTIONAL FLOW WITHOUT CONCRETE GUTTER (TYPE A)



INLET PROTECTION MULTIDIRECTIONAL FLOW USING SEDIMENT RETENTION ROLL (TYPE A)

NOTES

1. POSTS AND TOP RAIL SHALL BE A NOMINAL 2" X 4" NO. 2 SOUTHERN PINE, AND POSTS SHALL BE DRIVEN 24" MINIMUM IN THE GROUND.
2. END OF FILTER BARRIER TO BE EMBEDDED INTO AGGREGATE.
3. IF A DROP INLET IS LOCATED IN A SAG IN THE DITCH GRADE, A CHECK DAM IS REQUIRED FOR EACH SIDE OF THE INLET THAT RECEIVES DITCH FLOW.
4. WHERE DRAINAGE AREAS EXCEED ONE ACRE OR DITCH GRADE EXCEEDS 3%, A TEMPORARY SEDIMENT FOREBAY SHALL BE INSTALLED IN ACCORDANCE WITH THE EC-4 STANDARD.
5. WHEN REQUIRED SEE STANDARD EC-4 FOR DETAILS OF ROCK CHECK DAM AND SEDIMENT FORBAY.
6. SILT FENCE GEOTEXTILE IN ACCORDANCE WITH SECTION 245 OF THE ROAD AND BRIDGE SPECIFICATIONS.
7. ONLY SEDIMENT RETENTION ROLL PRODUCTS WITH A MINIMUM 18" DIAMETER LISTED ON THE VDOT APPROVED PRODUCTS LIST MAY BE USED FOR TYPE A INLET PROTECTION.
8. ALL STAKES SHALL BE DRIVEN 24" MIN. INTO THE GROUND AND SHALL EXTEND 6" ABOVE THE SEDIMENT RETENTION ROLL. WOODEN STAKES SHALL BE OAK AND HAVE NOMINAL DIMENSIONS OF 2" BY 2". STEEL STAKES SHALL HAVE A MINIMUM WEIGHT OF 1.33 POUNDS PER LINEAR FOOT.
9. SEDIMENT SHALL BE REMOVED FROM INLET PROTECTION WHEN IT HAS ACCUMULATED TO ONE- HALF THE EXPOSED HEIGHT OF THE STRUCTURE AND PAID FOR AS SEDIMENT REMOVAL PER CUBIC YARD.
10. STACKING SEDIMENT RETENTION ROLLS TO MEET THE REQUIRED INLET PROTECTION HEIGHT IS NOT PERMITTED.
11. SEDIMENT RETENTION ROLLS SHALL BE EMBEDDED INTO THE DITCH 2" EXCEPT WHEN PLACED OVER STANDARD EC-2 OR EC-3 LINED DITCH.
12. SEDIMENT RETENTION ROLLS AND STAKES USED FOR INLET PROTECTION APPLICATIONS SHALL BE REMOVED AFTER STABILIZATION IS COMPLETE.
13. GEOTEXTILE PRODUCTS DESIGNED TO BE INSERTED INTO OR ANCHORED TO THE TOP OF GRATE INLETS, AND ARE FOUND ON VDOT'S EC-6 APPROVED PRODUCT LIST, MAY BE SUBSTITUTED FOR THE DROP INLET PROTECTION DEVICES DETAILED IN THIS STANDARD.

INLET PROTECTION (TYPE A), ITEM CODE 27451 EACH

SPECIFICATION REFERENCE	
107	245
242	303
244	

A COPY OF THE ORIGINAL SEALED AND SIGNED DRAWING IS ON FILE IN THE CENTRAL OFFICE.

INLET PROTECTION (TYPE A)

VIRGINIA DEPARTMENT OF TRANSPORTATION



ROAD AND BRIDGE STANDARDS

REVISION DATE	SHEET 1 OF 3
04/19	113.09