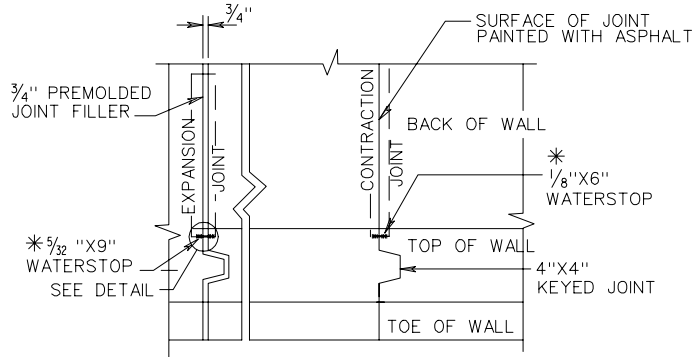
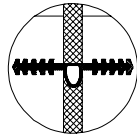


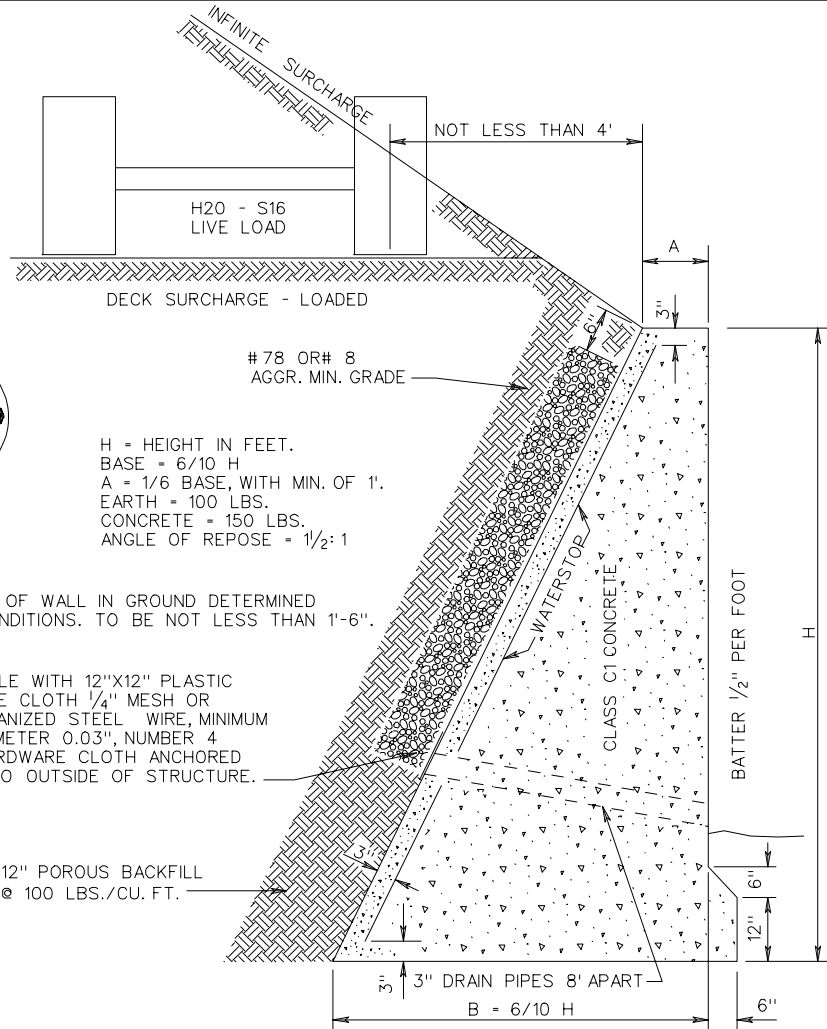
RW-3



CONTRACTION JOINTS AT INTERVALS NOT EXCEEDING 30'.
 EXPANSION JOINTS AT INTERVALS NOT EXCEEDING 90'.
 * WATER STOPS TO BE ELASTOMERIC OR OTHER APPROVED MATERIAL. DIMENSIONS SHOWN ARE ABSOLUTE MINIMUM.



WATERSTOP DETAIL



H = HEIGHT IN FEET.
 BASE = 6/10 H
 A = 1/6 BASE, WITH MIN. OF 1'.
 EARTH = 100 LBS.
 CONCRETE = 150 LBS.
 ANGLE OF REPOSE = 1/2: 1

NOTE:
 DEPTH OF WALL IN GROUND DETERMINED BY CONDITIONS. TO BE NOT LESS THAN 1'-6".

WEEP HOLE WITH 12"X12" PLASTIC HARDWARE CLOTH 1/4" MESH OR GALVANIZED STEEL WIRE, MINIMUM WIRE DIAMETER 0.03", NUMBER 4 MESH HARDWARE CLOTH ANCHORED FIRMLY TO OUTSIDE OF STRUCTURE.

12" POROUS BACKFILL @ 100 LBS./CU. FT.

SAFE BEARING CAPACITY OF SOIL

ROCK MINIMUM	10,000 - 20,000 LBS. SQ. FT.
GRAVEL AND COARSE SAND, WELL CEMENTED	16,000 - 20,000 LBS. SQ. FT.
CLAY IN THICK BEDS, ALWAYS DRY	12,000 - 16,000 LBS. SQ. FT.
CLAY IN THICK BEDS, MODERATELY DRY	8,000 - 12,000 LBS. SQ. FT.
CLAY, SOFT	2,000 - 4,000 LBS. SQ. FT.
SAND, DRY, COMPACT, AND WELL CEMENTED	8,000 - 12,000 LBS. SQ. FT.
SAND, CLEAN, DRY	4,000 - 8,000 LBS. SQ. FT.
ALLUVIAL SOILS, ETC	1,000 - 2,000 LBS. SQ. FT.

NOTE: IF COMPRESSION AT TOE EXCEEDS SAFE BEARING CAPACITY OF SOIL, A SPECIAL FOOTING IS TO BE USED.

HEIGHT OF WALL "H" IN FEET	THICKNESS AT TOP "A" IN FEET	THICKNESS AT BASE B=6H	COMPRESSION AT TOE LBS. SQ. FT.	AREA OF SECTION SQ. FT.
3	1'-0"	1'-9 5/8"	856	4.83
4	1'-0"	2'-4 3/4"	1141	7.43
5	1'-0"	3'-0"	1427	10.63
6	1'-0"	3'-7 1/4"	1712	14.43
7	1'-0"	4'-2 3/8"	1997	18.83
8	1'-0"	4'-9 5/8"	2283	23.83
9	1'-0"	5'-4 3/4"	2568	29.43
10	1'-0"	6'-0"	2853	35.63
11	1'-1 1/4 "	6'-7 1/4"	3139	42.98
12	1'-2 3/8 "	7'-2 3/8"	3424	51.03
13	1'-3 5/8 "	7'-9 5/8"	3709	59.78
14	1'-4 3/4 "	8'-4 3/4"	3995	69.23
15	1'-6"	9'-0"	4280	79.38

CONCRETE GRAVITY RETAINING WALLS
 INFINITE SURCHARGE AND DECK SURCHARGE - LOADED

SPECIFICATION REFERENCE

506

REV. 7/01

401.02