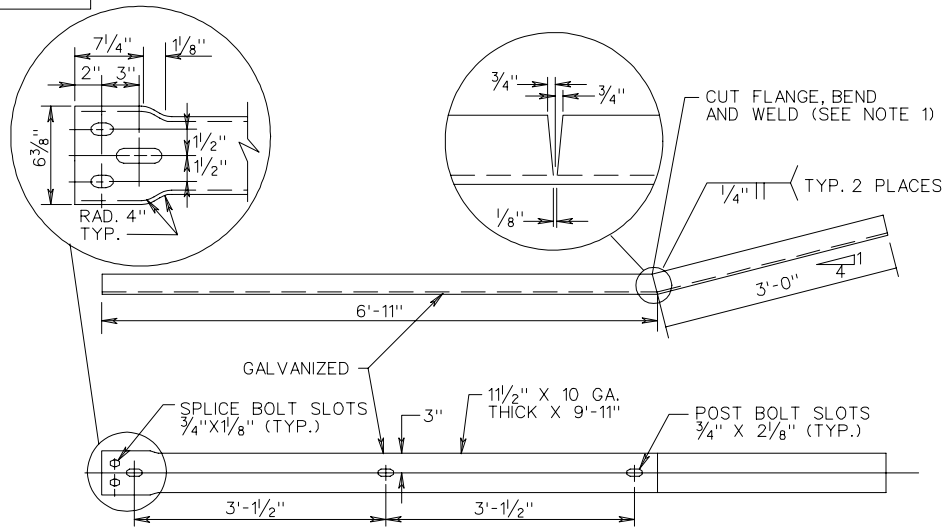


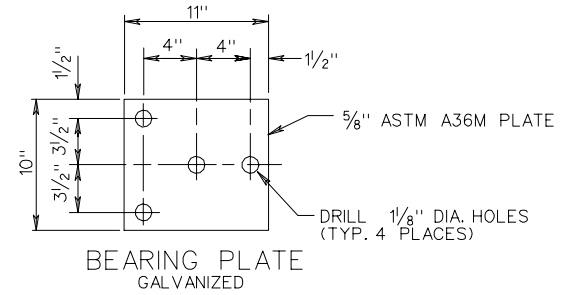
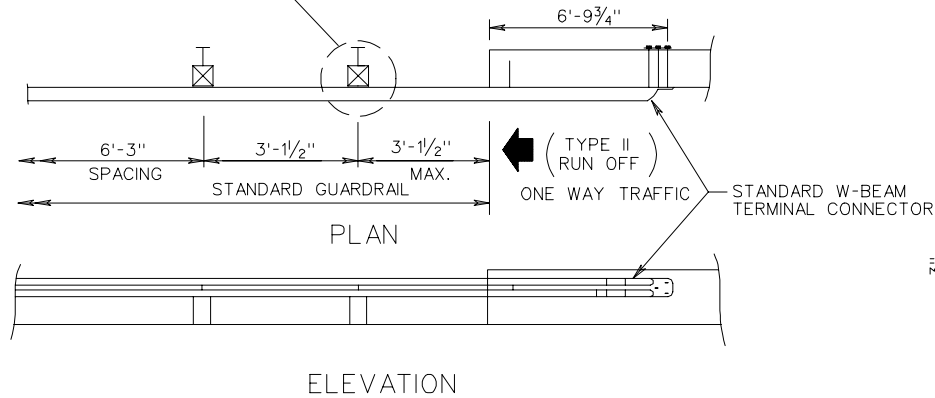
GR-FOA-1



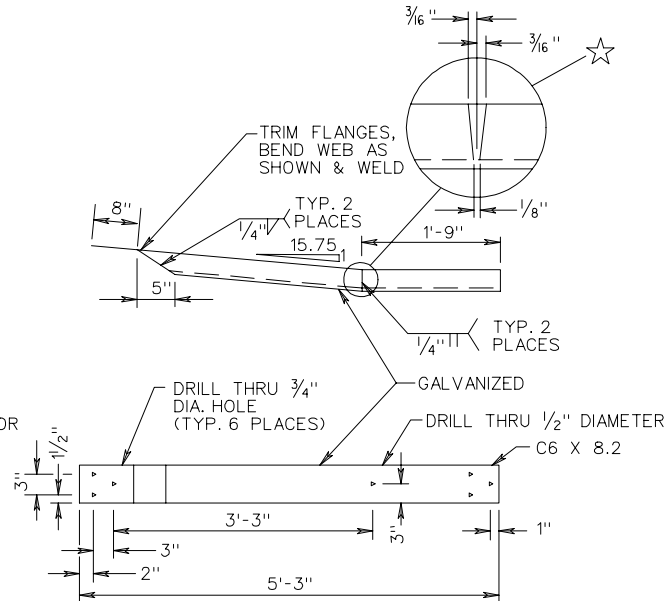
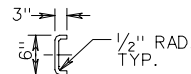
NOTE:
 CAN BE FIELD CUT AND BENT USING HEAT.
 IF SHOP CUT AND BENT, RIGHT HAND OR LEFT
 HAND MUST BE SPECIFIED DEPENDING ON
 WHICH SIDE OF THE ROADWAY THE TRANSITION
 IS USED.

ITEM ⑦ DETAIL

INDICATES EXTRA POST REQ'D. FOR
 RUN-OFF FIXED OBJECT ATTACHMENT
 ST'D. GR-FOA-1 TYPE II



☆ CAN BE FIELD CUT AND BENT USING HEAT.



ITEM ⑧ DETAIL

W BEAM GUARDRAIL - FIXED OBJECT ATTACHMENT
 RUBRAIL AND HARDWARE DETAILS

SPECIFICATION REFERENCE

505