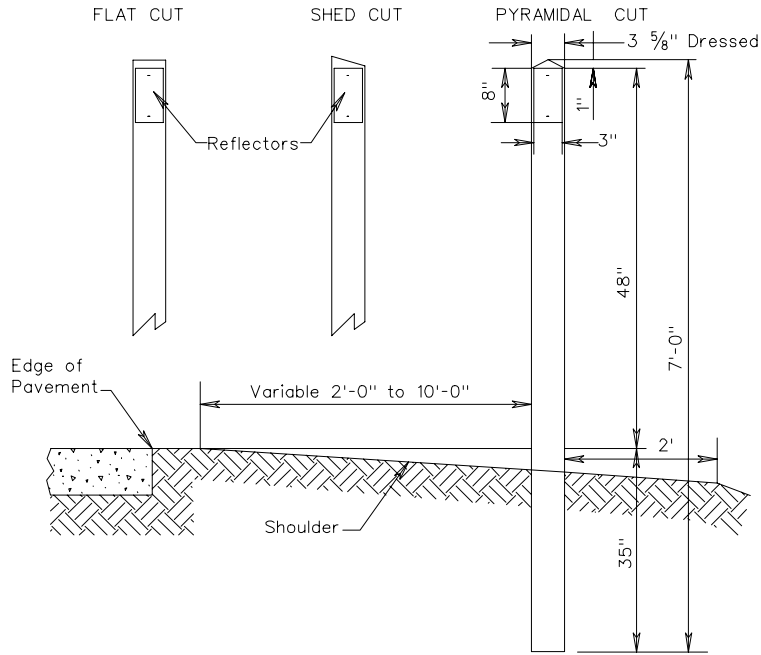


ED-1

STANDARD ROAD EDGE DELINEATORS



NOTES:

Standard ED-1 delineators consist of reflectorized sheeting, cut to a 3" by 8" vertical rectangle, mounted on a backing of aluminum alloy, not less than 0.063 thick conforming to ASTM B209, alloy 6061-T6 or 5052-H38. The color of the reflective sheeting shall, in all cases, conform to the color of the edgelines.

The reflectors are attached to wood posts with a minimum of two nails or screws produced from alloy 2024-T4 or 6061-T6.

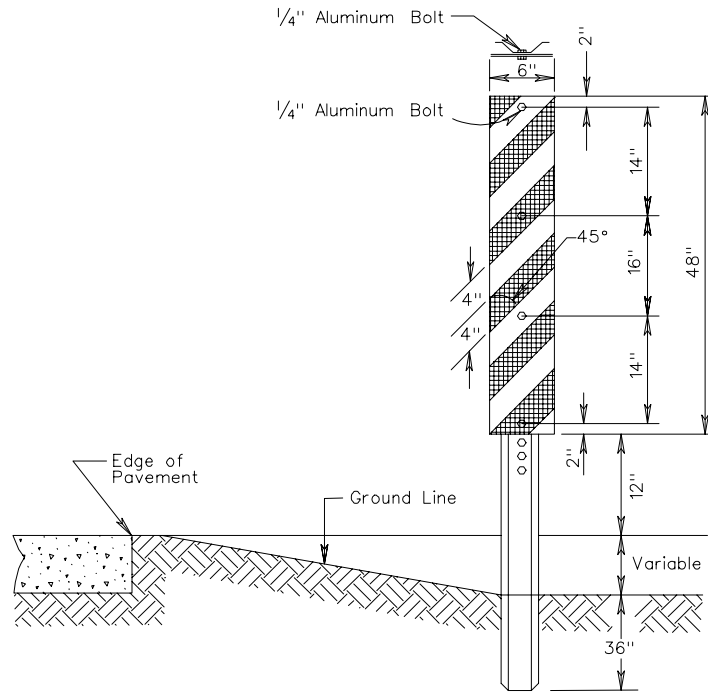
The posts above the ground are painted white with number 11 white paint.

Posts are treated with a water-borne preservative in accordance with Section 236 of the Road and Bridge Specifications.

The top of the posts may have a flat, shed, or pyramidal cut; however, they shall be uniform throughout a project. Cuts shall be in accordance with Standard WSP-1.

ED-2

SPECIAL ROAD EDGE DELINEATORS



NOTES:

Special delineators are made from aluminum alloy, not less than 0.080 thick conforming to ASTM B209, alloy 6061-T6 or 5052-H38.

Delineators extend 1" above the top of the post.

Delineators are reflectorized, and in all cases, the color shall conform to the color of the edgelines, alternating with a black stripe.

The stripes shall slope down toward the center of roadway.

Delineators are mounted on U-Type posts fabricated from rolled-rail steel 1.33 lb./ft. minimum.

The bottom of the delineator panel is 12" above the pavement edge elevation.

TYPICAL DETAILS FOR STANDARD & SPECIAL ROAD EDGE DELINEATORS