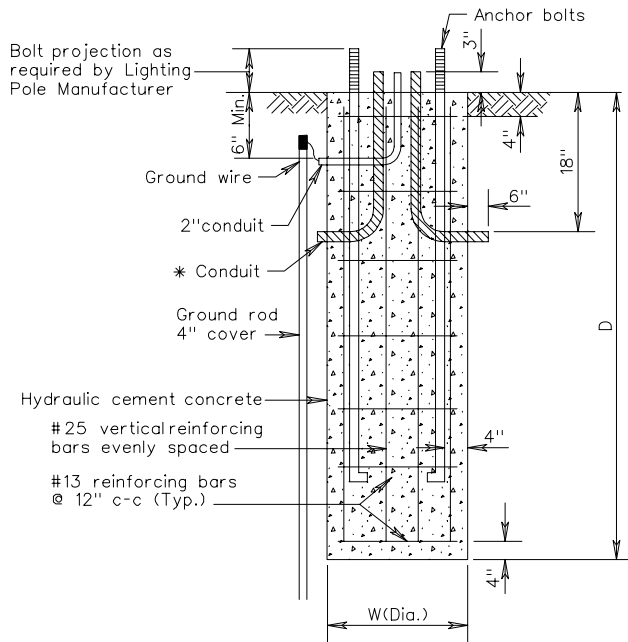
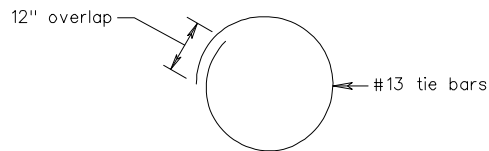


PLAN VIEW  
TYPE A AND B



SECTION A-A



PLAN VIEW

Type	W	D	Vertical Bars
A	2' 6"	8'	8 - #25

Notes:

Conduit elbows shall have a 90° bend. The bend radius shall be in accordance with the N.E.C.

The bolt circle template shall be furnished by the lighting pole manufacturer.

\* The number, orientation and size of conduits entering and exiting foundations shall be as shown on plans.

No mortar, grout, or concrete shall be placed between bottom of base plate and top of pedestal.

LIGHTING POLE FOUNDATION  
INSTALLATION DETAILS

VIRGINIA DEPARTMENT OF TRANSPORTATION