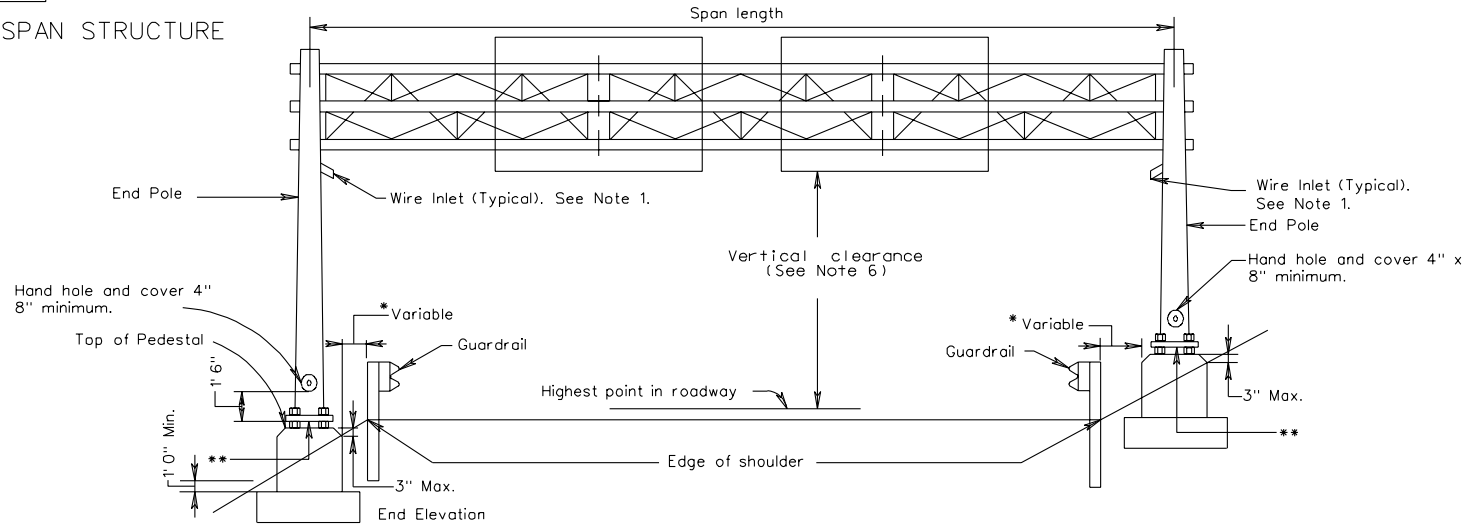


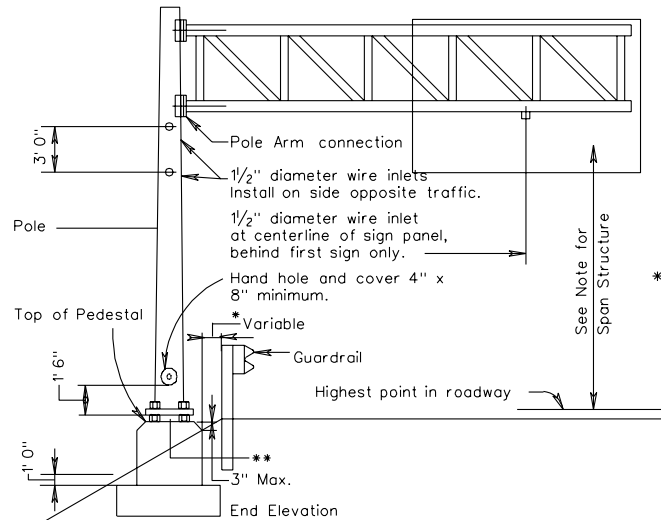
REVISED ON 7/04

OSS-1

SPAN STRUCTURE



CANTILEVER STRUCTURE



NOTES:

1. 1/2" diameter wire inlets shall be provided at the following locations:
  - A. On span structures on the front leg of end pole 12" below bottom chord.
  - B. On cantilever structures on pole 12" below bottom chord.
  - C. On span structures below bottom chord at centerline behind first sign panel from each end pole.
  - D. On cantilever structures below bottom chord at centerline behind first sign panel from pole.
2. All unused wire inlets shall be capped water tight.
- \*3. Distance shall be no less than the minimum indicated in Standard GR-INS.
4. No mortar, grout, or concrete shall be placed between bottom of base plate and top of pedestal.
- \*\*5. Distance between bottom of base plate and top of pedestal shall be less than or equal to twice the diameter of anchor bolt but shall not be greater than 3".
6. Vertical clearance for overhead and bridge mounted sign structures shall be no less than 19 feet 0 inch and no more than 21 feet 0 inch from the bottom of the lowest mounted sign panel to the crown of the roadway, unless otherwise specified on the plans. Luminaire assemblies shall have a vertical clearance of no less than 17 feet six inches from the bottom of the assembly to the crown of the roadway.

TYPICAL DETAILS FOR OVERHEAD SIGN STRUCTURES

REV. 1/04

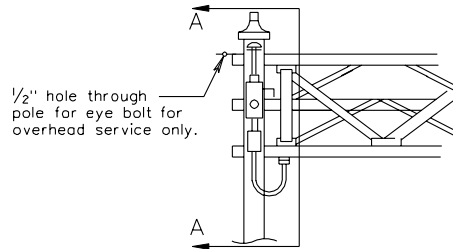
1301.72

VIRGINIA DEPARTMENT OF TRANSPORTATION

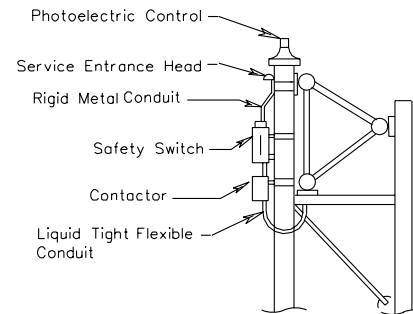
## ELECTRIC DETAILS FOR SIGN LIGHTING

### SPAN SIGN STRUCTURE

FRONT VIEW

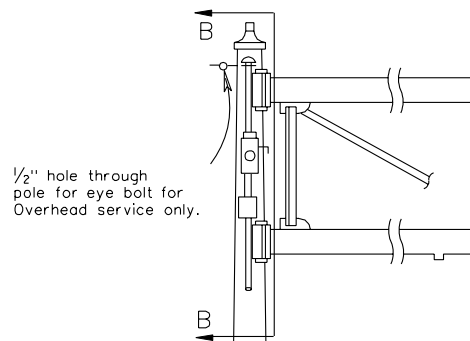


SECTION A-A

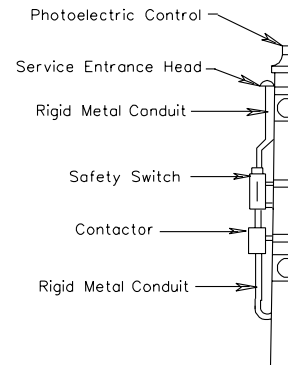


### CANTILEVER SIGN STRUCTURE

FRONT VIEW



SECTION B-B



Note:

A safety switch shall be installed on all sign structures requiring electrical power. Electrical service for sign structures not controlled by a control center shall have a photocell and a photocell controlled contactor to control the electrical power to luminaires. The contactor shall be in a NEMA 3R enclosure within 24 inches of the safety switch.

All conduit located in or on overhead sign structure shall be 3/4" minimum.

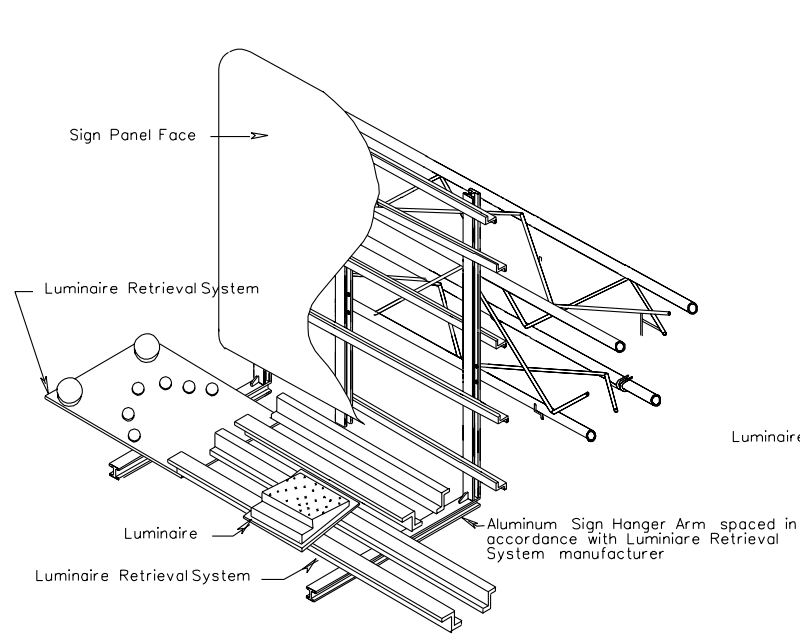
## TYPICAL DETAILS FOR OVERHEAD SIGN STRUCTURES

VIRGINIA DEPARTMENT OF TRANSPORTATION

REVISED ON 7/04

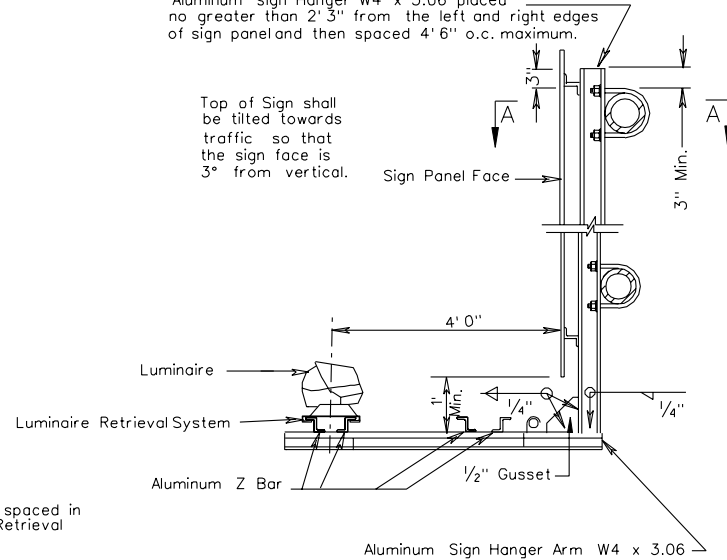
OSS-1

SIGN HANGER ERECTION DETAIL WITH LUMINAIRE RETRIEVAL SYSTEM



Aluminum sign Hanger W4 x 3.06 placed no greater than 2' 3" from the left and right edges of sign panel and then spaced 4' 6" o.c. maximum.

Top of Sign shall be tilted towards traffic so that the sign face is 3° from vertical.

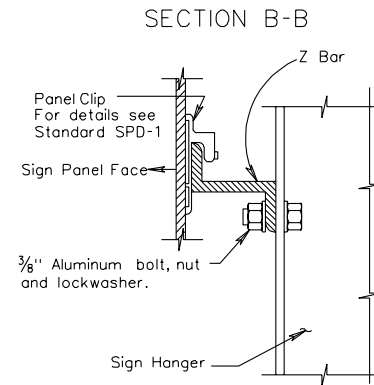
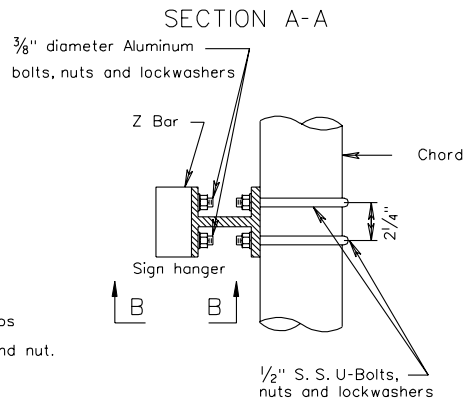


Note:

Luminaire Retrieval System including electrical system shall be equal to "LUMI-TRAK" and designed for the number of luminaires indicated on the plans. Spacing of hangers used to support the retrieval system shall be in accordance with manufacturers recommendations. Turntable end shall be of sufficient length to align with the vertical edge of the outside paved shoulder ( $\pm 6"$ ) or shall be extended 5 feet beyond the vertical edge ( $\pm 6"$ ) of the outermost sign luminaire whichever is greater. The opposite end of retrieval system shall extend a minimum of 6 inches past the outermost vertical edge of the sign hanger arm.

Luminaires and Luminaire Retrieval System required only where indicated on the plans.

Signs fabricated using the SPD-1 "Alternate Sign Panel Design" shall be attached to the sign hangers in accordance with SSP-VIA "Alternate Details for Type VIA Interstate Sign Structures", except that post clamps shall not be used. Post clamp bolts shall be inserted through holes drilled into the sign hangers and secured using a stainless steel lockwasher and nut.

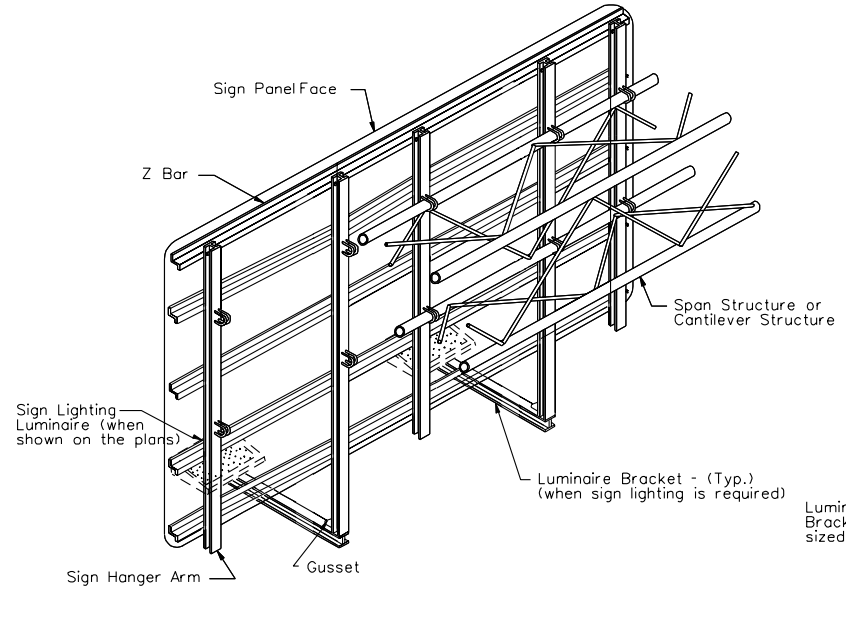


TYPICAL DETAILS FOR OVERHEAD SIGN STRUCTURES

VIRGINIA DEPARTMENT OF TRANSPORTATION

REV. 1/04

1301.74

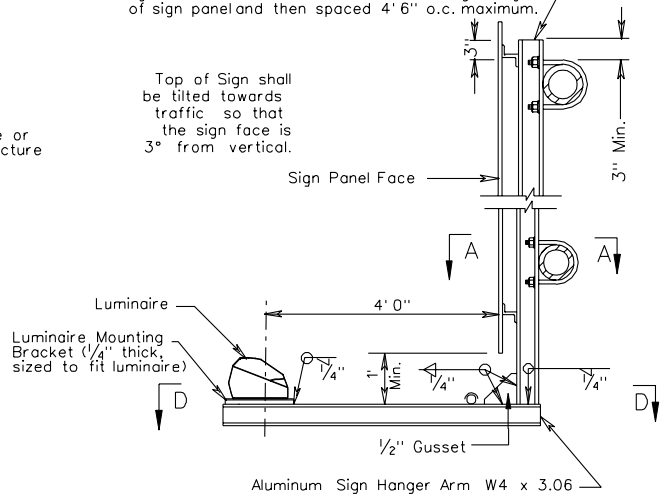


SIGN ATTACHMENT TO TRUSS-TYPE STRUCTURES

SIGN HANGER ERECTION DETAIL WITH LUMINAIRE  
(WHEN NO LUMINAIRE RETRIEVAL SYSTEM IS REQUIRED)

Aluminum sign Hanger W4 x 3.06 placed no greater than 2' 3" from the left and right edges of sign panel and then spaced 4' 6" o.c. maximum.

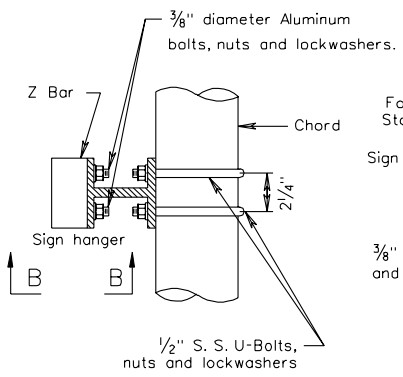
Top of Sign shall be tilted towards traffic so that the sign face is 3° from vertical.



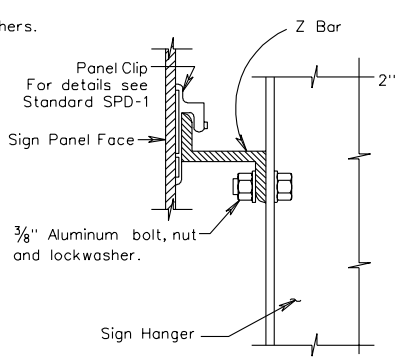
Note

Luminaires required only where indicated on the plans.  
Luminaire to be attached to mounting bracket with 4, 3/8" Dia. galvanized cap screws and spring nuts.  
Signs fabricated using the SPD-1 "Alternate Sign Panel Design" shall be attached to the sign hangers in accordance with SSP-VIA "Alternate Details for Type VIA Interstate Sign Structures", except that post clamps shall not be used. Post clamp bolts shall be inserted through holes drilled into the sign hangers and secured using a stainless steel lockwasher and nut.

SECTION A-A



SECTION B-B



SECTION D-D

