

SECTION A-A

6061-T6 Aluminum Alloy
 1/4"-20 hexagon head
 nut to be installed with
 torque not to exceed
 25 in. Lbs.

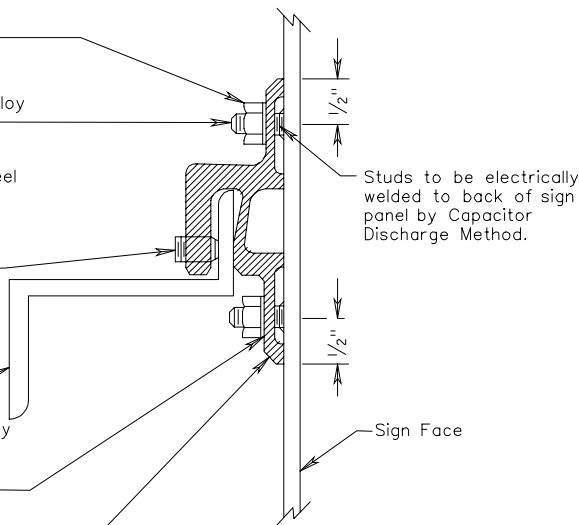
5356-H32 Aluminum Alloy
 1/4"-20x1/2" long stud

Type 304 stainless steel
 cup point set screw
 3/8"-16x1/2" long
 NC-2 socket head to
 be provided in each
 panel clip.

Zee Bar 6061-T6
 Aluminum Alloy.

7075-T6 Aluminum Alloy
 0.255 I. D. 0.493 O. D.
 x 0.062" thick spring
 lockwasher.

6061-T6 Aluminum
 Panel clip



SECTION B-B

Sign Face

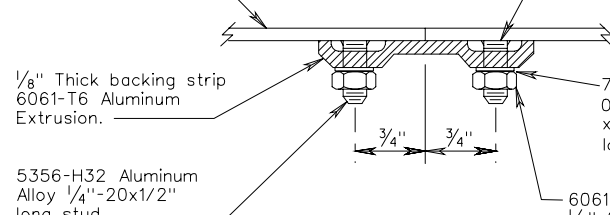
1/8" Thick backing strip
 6061-T6 Aluminum
 Extrusion.

5356-H32 Aluminum
 Alloy 1/4"-20x1/2"
 long stud.

Studs to be electrically
 welded to back of sign
 panel by Capacitor
 Discharge Method.

7075-T6 Aluminum Alloy
 0.255 I. D. 0.493 O. D.
 x 0.062" thick spring
 lockwasher.

6061-T6 Aluminum Alloy
 1/4"-20 hexagon head
 nut to be installed with
 torque not to exceed
 25 in. Lbs.



SIGN PANEL DESIGN