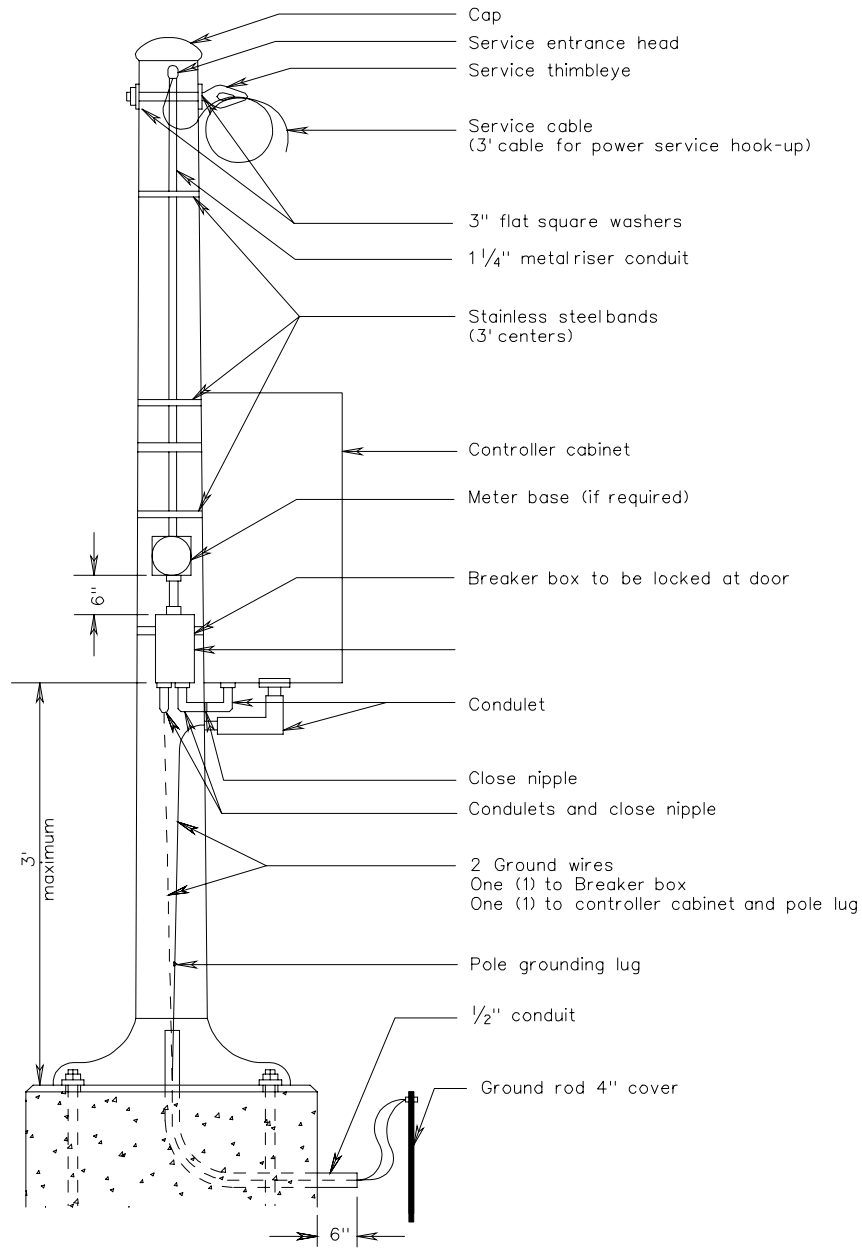


Notes:

No other conductors shall be run in the same conduit with electrical service cable.

Concrete pad required when cabinet mounted on pole in earth areas. (See Standard CTE-1 for pad detail).

For alternate method of ground wire entering breaker box see Standard SE-5.



TYPE A

ELECTRICAL SERVICE DETAILS
SIGNAL INSTALLATIONS