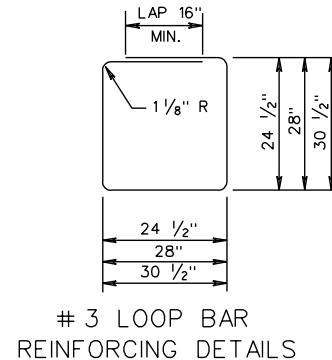
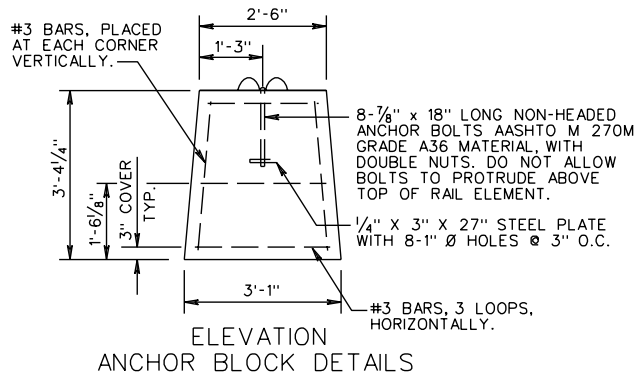
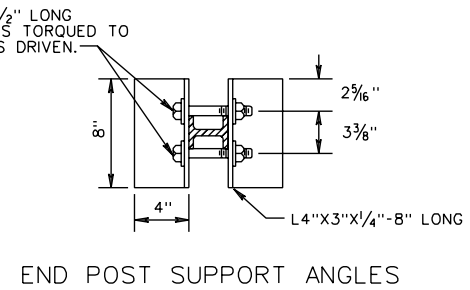
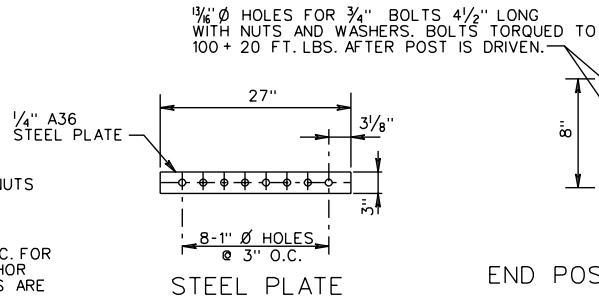
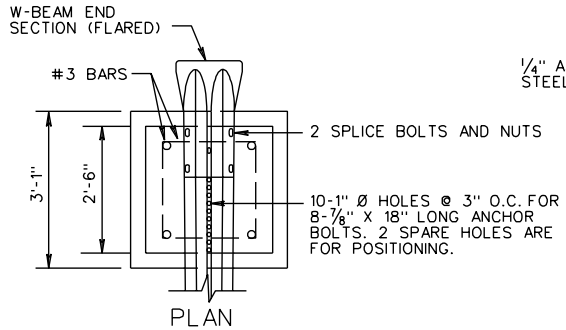
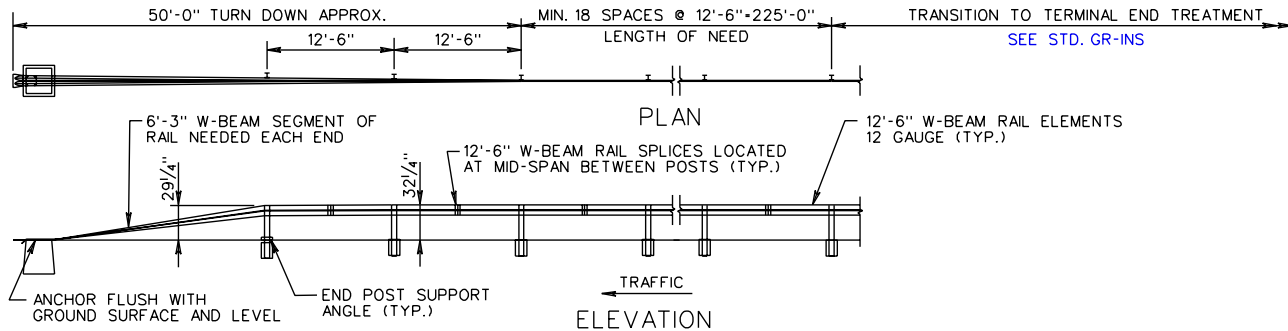


REVISED ON 1-04

GR-8,8A,8B,8C



GR-8 TYPE II TERMINAL TREATMENT
(RUN-OFF ANCHORAGE)

SHEET 2 OF 2

STANDARD W BEAM GUARDRAIL (WEAK POST SYSTEM)
TL-3 (>45 MPH)

VIRGINIA DEPARTMENT OF TRANSPORTATION

SPECIFICATION REFERENCE

221
505

REV. 7/01
501.15