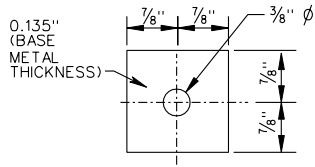
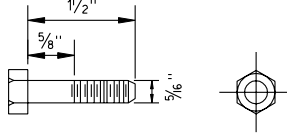


⊗ THE GUARDRAIL AND MEDIAN BARRIER COMPONENTS DEPICTED IN A.R.T.B.A. TECHNICAL BULLETIN NUMBER 268B MAY BE SUBSTITUTED IF INTERCHANGEABLE WITH THE STANDARDS FOR GUARDRAIL (GR) OR MEDIAN BARRIER (MB) AND APPROVED BY THE ENGINEER.



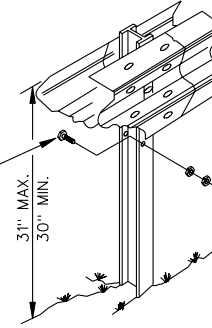
SQUARE WASHER



5/16" HEX BOLT AND NUT

BOLT AND NUT SHALL HAVE 4000 POUNDS MIN. TENSILE STRENGTH.

5/8" DIAMETER HOLE FOR 1/2" SUPPORT BOLT 1/2" LONG, 2 NUTS, NO WASHER. NO SUPPORT BOLTS IN THE LAST THREE POSTS OF EACH END OF EACH INSTALLATION.



* SUPPORT BOLT TO BE LOCATED UNDER BOTH RAIL BEAMS.

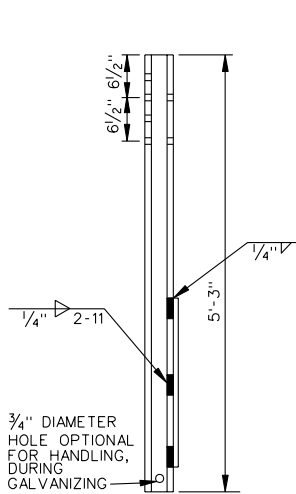
TYPICAL INSTALLATION

NOTES:

- STANDARD MB-5 POST SPACING IS 12'-6"
- STANDARD MB-5A POST SPACING IS 6'-3"
- STANDARD MB-5B POST SPACING IS 3'-1/2"
- STANDARD MB-5 DEFLECTION IS 8'-0"

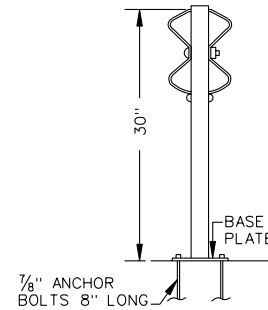
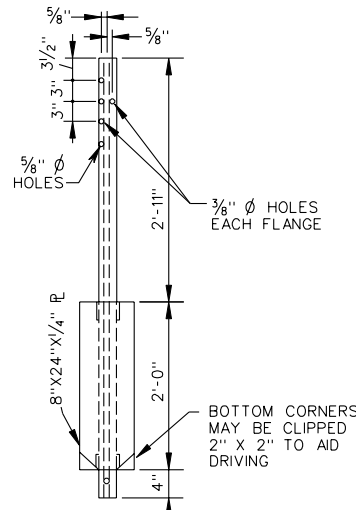
ALL POSTS, BOLTS, NUTS AND WASHERS ARE TO BE GALVANIZED.

FOR DETAILS OF GUARDRAIL ELEMENT, SPLICE JOINT, HARDWARE, ETC. SEE SHEET NO. 501.01.

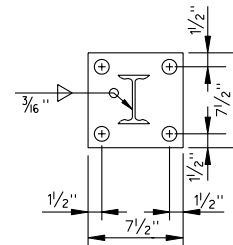


FOR ROCK INSTALLATION, 8" X 24" X 1/4" PLATE IS TO BE ELIMINATED. DRILL OR EXCAVATE HOLE FOR POST, PLACE AND BACKFILL WITH CRUSHER RUN AGGREGATE TO LEVEL OF ROCK.

S3X5.7 STEEL POST



ALL HOLES 1" Ø DIAMETER
ALL WELDS 3/16"
PLATE IS 1/2" THICK



BASE PLATE

STRUCTURE MOUNTED BARRIER

SPECIFICATION REFERENCE

221
505

STANDARD W BEAM MEDIAN BARRIER (WEAK POST SYSTEM)

VIRGINIA DEPARTMENT OF TRANSPORTATION