

SECTION A-A

6061-T6 Aluminum Alloy 1/4"-20 hexagon head nut to be installed with torque not to exceed 25 in. Lbs.

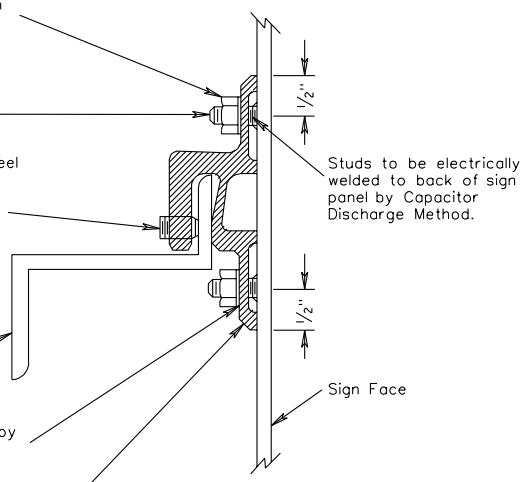
5356-H32 Aluminum Alloy 1/4"-20x1/2" long stud.

Type 304 stainless steel cup point set screw 3/8"-16x1/2" long NC-2 socket head to be provided in each panel clip.

Zee Bar 6061-T6 Aluminum Alloy.

7075-T6 Aluminum Alloy 0.255 I. D. 0.493 O. D. x 0.062" thick spring lockwasher.

6061-T6 Aluminum Alloy panel clip.



SECTION B-B

Sign Face

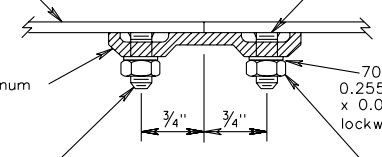
Studs to be electrically welded to back of sign panel by Capacitor Discharge Method.

1/8" Thick backing strip 6061-T6 Aluminum Extrusion.

5356-H32 Aluminum Alloy 1/4"-20x1/2" long stud.

7075-T6 Aluminum Alloy 0.255 I. D. 0.493 O. D. x 0.062" thick spring lockwasher.

6061-T6 Aluminum Alloy 1/4"-20 hexagon head nut to be installed with torque not to exceed 25 in. Lbs.

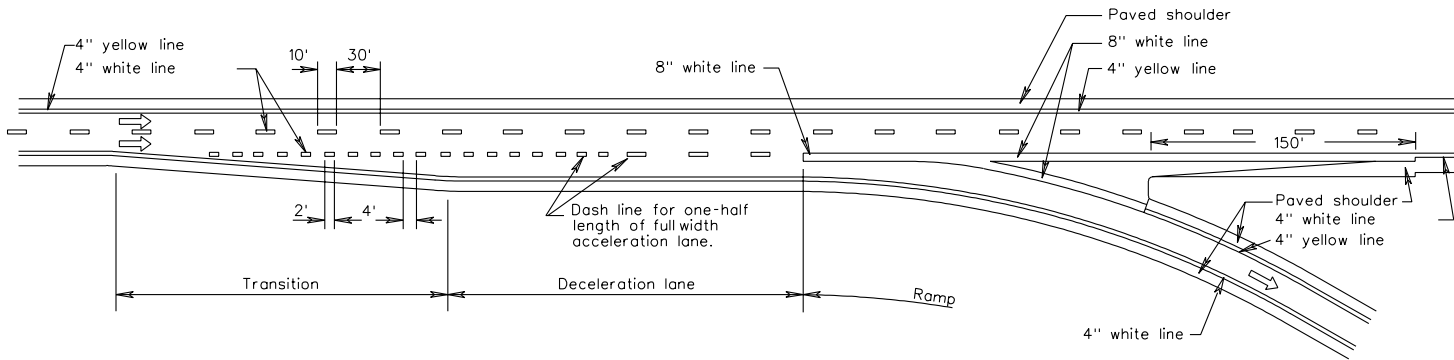


SIGN PANEL DESIGN

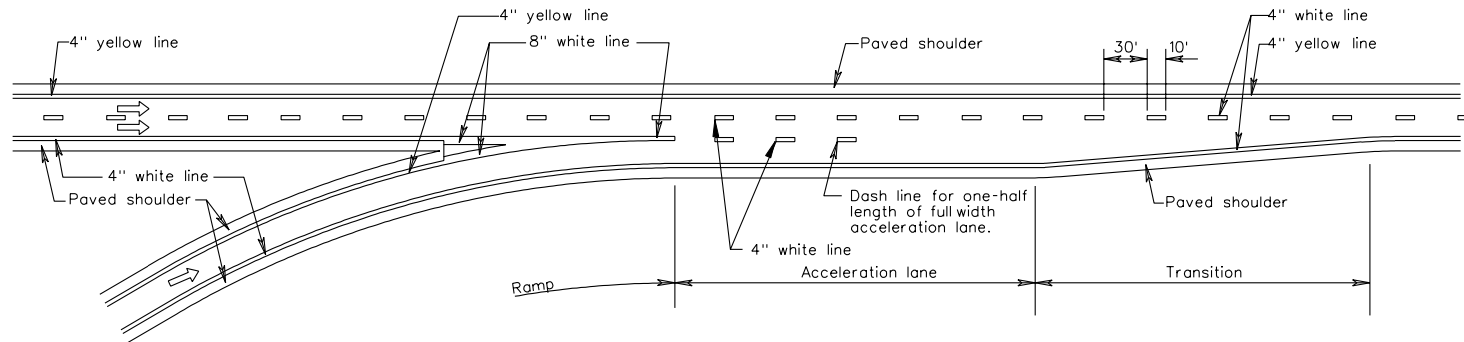
VIRGINIA DEPARTMENT OF TRANSPORTATION

PM-1

INTERCHANGE EXIT



INTERCHANGE ENTRANCE

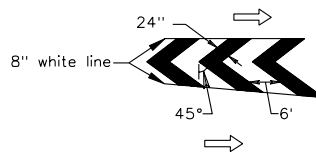


Notes:

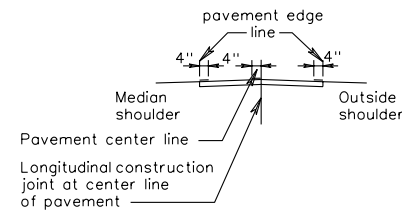
Place pavement center line marking on center line of bituminous surface.

All pavement markings shall be installed in accordance with the MUTCD.

GORE AREA HATCHING OPTIONAL



LATERAL PLACEMENT FOR PAVEMENT LINE MARKING ON HYDRAULIC CEMENT CONCRETE



TYPICAL PAVEMENT MARKING
DETAILS

VIRGINIA DEPARTMENT OF TRANSPORTATION

1301.86