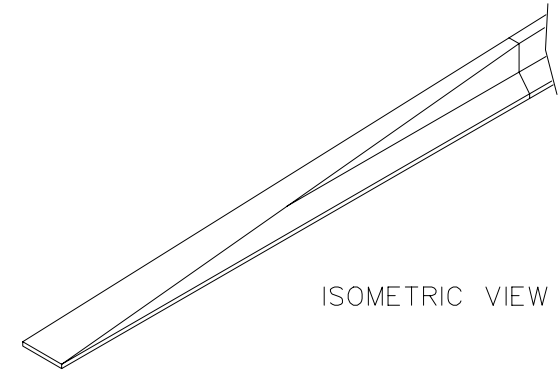


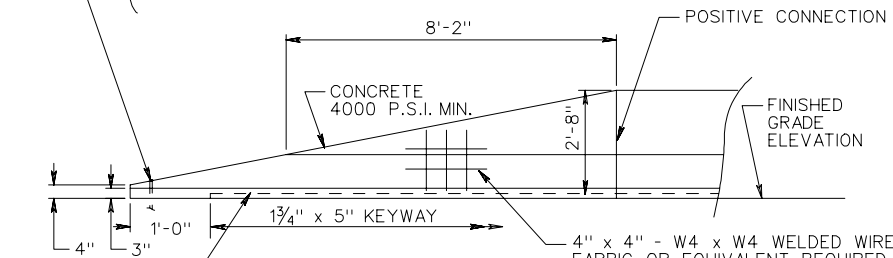
PLAN VIEW



ISOMETRIC VIEW

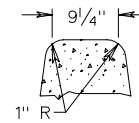
1" I.D. METAL SLEEVE (REINFORCING STEEL SHALL SURROUND 1" I.D. METAL SLEEVE)

USE 3/4" x 9" EXPANSION BOLTS FOR RIGID PAVEMENT INSTALLATION ONLY (BOLTS TO BE REMOVABLE)
 USE 3/4" x 3'-0" DRIFT PINS FOR FLEXIBLE PAVEMENT INSTALLATIONS.



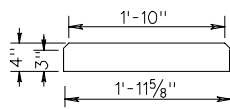
ELEVATION VIEW

MANUFACTURER'S REINFORCING STEEL DESIGN IS TO BE APPROVED BY ENGINEER.

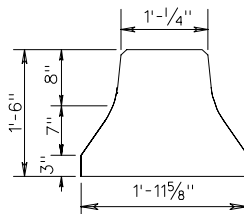


ALTERNATE TOP

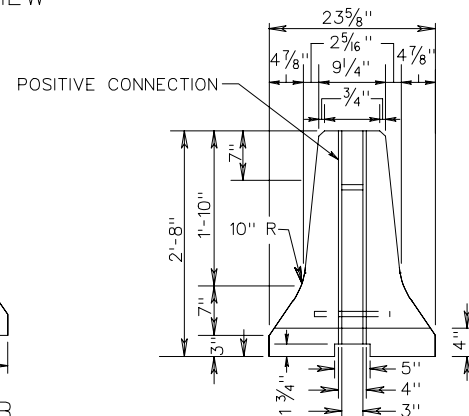
BASIS OF PAYMENT: CONCRETE MEDIAN BARRIER 12' TERMINAL SECTION IS TO BE MEASURED AND PAID FOR IN LIN. FT. ST'D. MB-7D, OR LIN. FT. OF TRAFFIC BARRIER SERVICE CONCRETE.



SECTION A-A



SECTION B-B



SECTION C-C

NOTES:

CONCRETE TO BE 4000 P.S.I..

REINFORCING STEEL TO BE GRADE 60. ALL REINFORCING IS TO HAVE A MINIMUM CONCRETE COVER OF 1/2".

FOR USE WHERE THE OPERATING SPEED IS 40 M.P.H. OR LESS.

LOCATION OF THE BARRIER END SECTIONS TO BE AS NOTED ON PLANS OR AS APPROVED BY THE ENGINEER.

FOR POSITIVE CONNECTION DETAILS AND DIMENSIONS SEE STANDARD MB-INS.

ONLY FOR USE OUTSIDE OF CLEAR ZONE.

SPECIFICATION REFERENCE

105

PRECAST CONCRETE MEDIAN BARRIER
 12 FT. TERMINAL SECTION
 VIRGINIA DEPARTMENT OF TRANSPORTATION