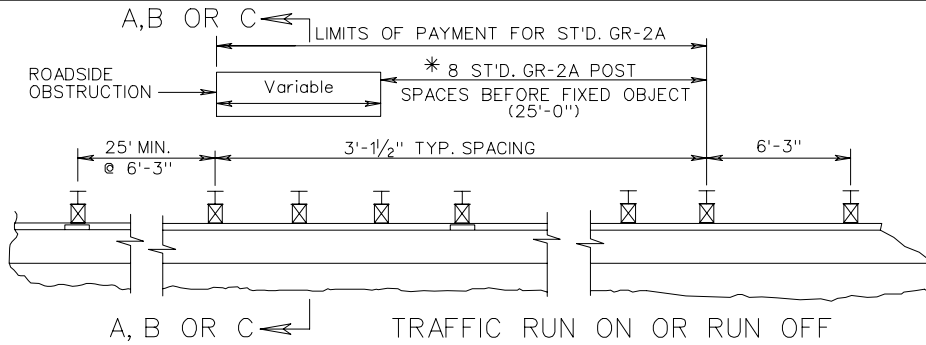
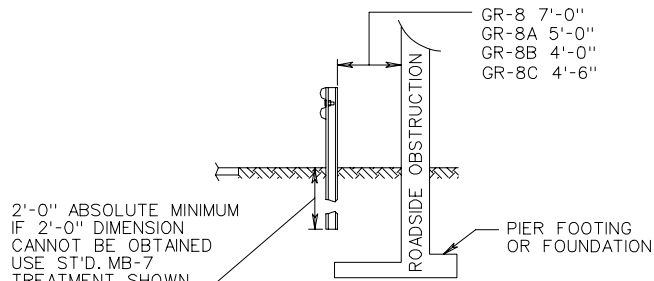


SECTION A-A

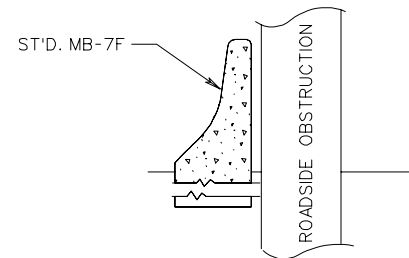


\*FOR TWO WAY TRAFFIC, USE 8 POST SPACING DESIGN FROM EACH END OF FIXED OBJECT.

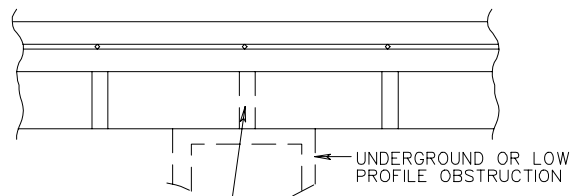
FOR USE WHERE DISTANCE FROM BACK OF GR-2A POST TO FIXED OBJECT IS LESS THAN 2'-0".



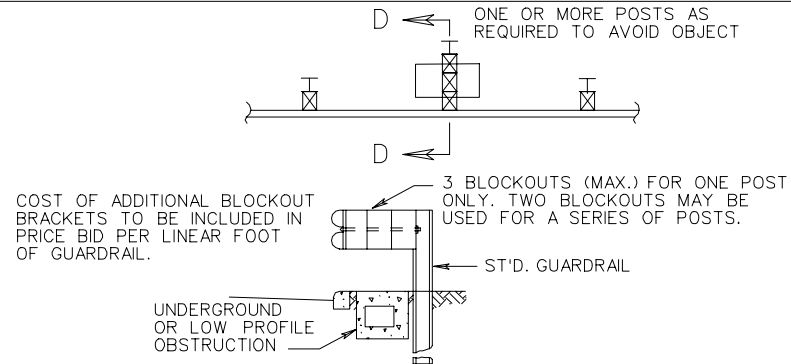
SECTION B-B



SECTION C-C



DETAIL OF SPECIAL DESIGN SITUATION



SECTION D-D  
DETAIL OF MULTIPLE BLOCK-OUT TO AVOID UNDERGROUND OR LOW PROFILE OBSTRUCTION

SHEET 3 OF 8

W BEAM GUARDRAIL INSTALLATION CRITERIA

VIRGINIA DEPARTMENT OF TRANSPORTATION

SPECIFICATION REFERENCE

221  
505