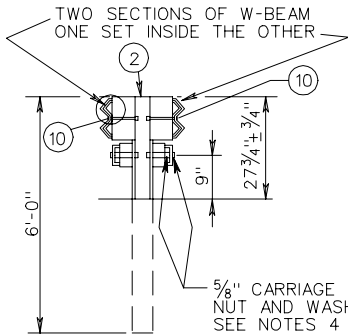
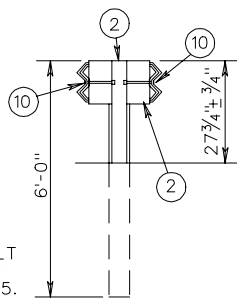


NOTE:  
RUBRAIL MUST BE TWISTED 35° BETWEEN SECTIONS C-C AND D-D. SHOP FABRICATION MAY BE REQUIRED. RIGHT AND LEFT HAND TWISTS WILL BE REQUIRED.

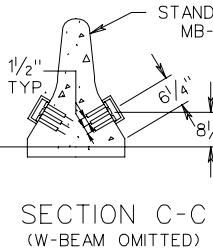
- NOTES:
1. ARE GUARDRAIL POSTS ARE TO BE STEEL.
  2. ALL GUARDRAIL COMPONENTS ARE TO BE IN ACCORDANCE WITH VDOT ROAD AND BRIDGE STANDARDS.
  3. POSTS 1, 2, 3, 4 AND 5 REQUIRE AN ADDITIONAL HOLE TO ATTACH LOWER BLOCKS AND/OR RUBRAIL. RUBRAIL IS NOT BOLTED TO POSTS 2 AND 4.
  4. BOTTOM WOOD BLOCKS LOCATED ON POSTS 1 THROUGH 4 ARE TO BE DRILLED AND SECURED WITH 5/8" CARRIAGE BOLTS (LENGTH AS REQUIRED)
  5. W-BEAM IS NOT BOLTED TO POSTS 2, 4, 5 AND 7. THESE BLOCKS ARE TO BE BOLTED DIRECTLY TO POSTS.
  6. APPROPRIATE LENGTH 7/8" ASTM A325 HEX BOLTS ARE TO BE USED WITH HOLES DRILLED THROUGH THE CONCRETE MEDIAN BARRIER, ATTACHING THE W-BEAM TERMINAL CONNECTORS ON EACH SIDE.



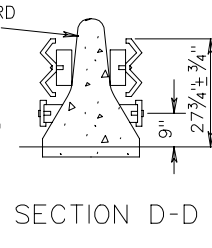
SECTION A-A  
(ONE RAIL OMITTED)



SECTION B-B  
(ONE RAIL OMITTED)



SECTION C-C  
(W-BEAM OMITTED)



SECTION D-D

| RUBRAIL WOOD BLOCKS 7" x 4" |           |
|-----------------------------|-----------|
| POST                        | THICKNESS |
| 1                           | 4 1/4"    |
| 2                           | 3 1/4"    |
| 3                           | 2"        |
| 4                           | 1"        |

| ITEM | MATERIALS/SPECIFICATIONS/NOTES   |
|------|--|
| 1    | 5/8" WASHER  |
| 2    | ST'D. W6 X 8.5 OR W6 X 9 STEEL POSTS, ST'D. 6" X 8" X 14" LONG TREATED PINE BLOCK OR RE-CYCLED MATERIAL. |
| 3    | ST'D. W-BEAM TERMINAL CONN. (MOD.)   |
| 4    | STANDARD W-BEAM RAIL   |
| 5    | 5/8" X 2" LG. GUARDRAIL BOLT AND RECESSED NUT  |

| ITEM | MATERIALS/SPECIFICATIONS/NOTES                 |
|------|--|
| 6    | RECTANGULAR PLATE WASHER (SEE STANDARD GR-HDW) |
| 7    | BENT PLATE (SEE SHEET 2 OF 2)                  |
| 8    | C6 x 8.2 RUBRAIL (SEE SHEET 2 OF 2)            |
| 9    | WOOD BLOCKOUT FOR RUBRAIL (SEE SHEET 2 OF 2)   |
| 10   | 5/8" x 10" LONG HEX BOLT WITH NUT              |

- TYPE I TWO RUN-ON SECTIONS (WITH 2 RUBRAILS SHOWN)  
 TYPE II ONE RUN-ON SECTION WITH 1 RUBRAIL RETAINED)  
 ONE RUN-OFF SECTION (WITH 1 RUBRAIL REMOVED)  
 TYPE III TWO RUN-OFF SECTIONS (WITH 2 RUBRAILS REMOVED)

BLOCKED-OUT W-BEAM MEDIAN BARRIER-FIXED OBJECT ATTACHMENT FOR USE BETWEEN STANDARD MB-7 AND STANDARD MB-3

SPECIFICATION REFERENCE

505