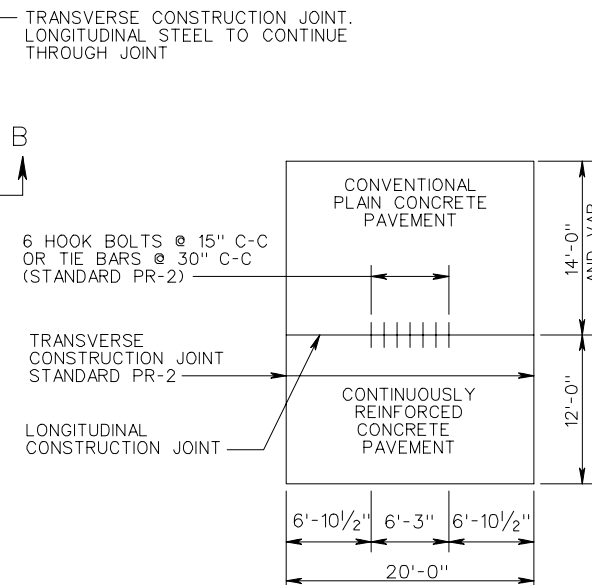
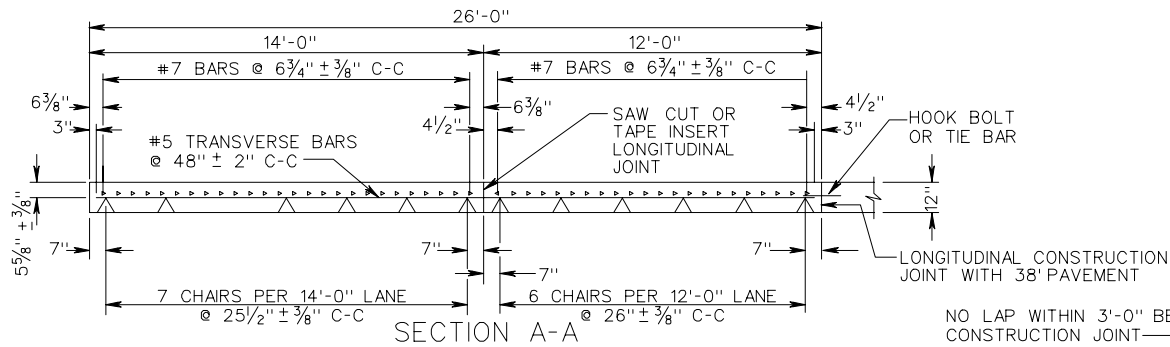


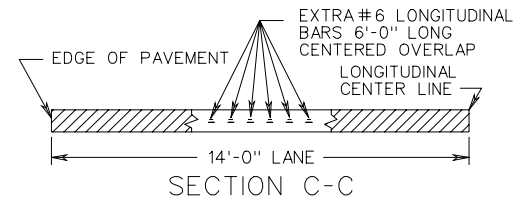
PLAN VIEW  
CONTINUOUSLY REINFORCED CONCRETE PAVEMENT



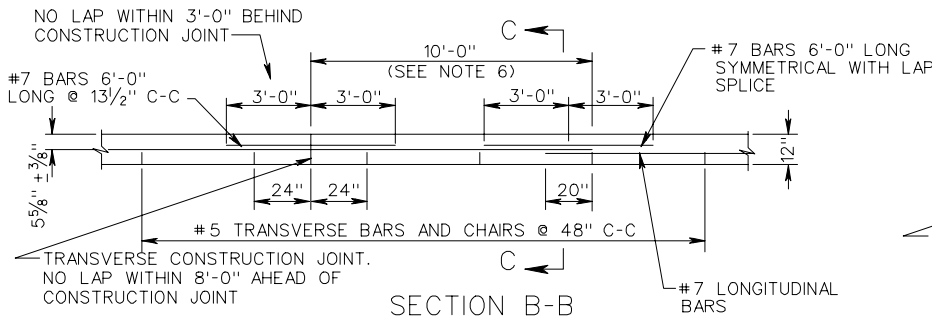
PLAN - RAMP AND  
MAIN LINE CONNECTION



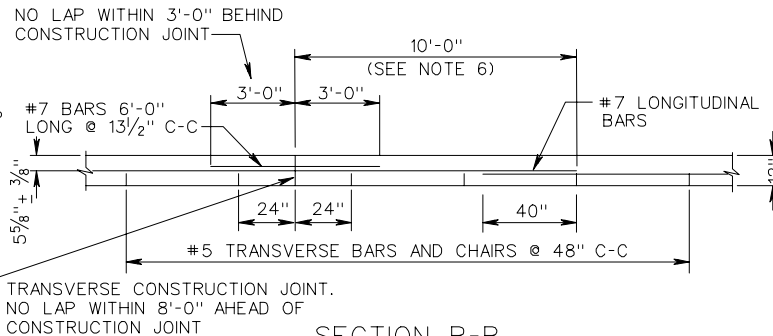
SECTION A-A



SECTION C-C



SECTION B-B  
EXTRA BAR METHOD



SECTION B-B  
DOUBLE LAP METHOD

12" THICK CONTINUOUSLY REINFORCED  
CONCRETE PAVEMENT-14' TRAVEL LANE

SPECIFICATION  
REFERENCE

316