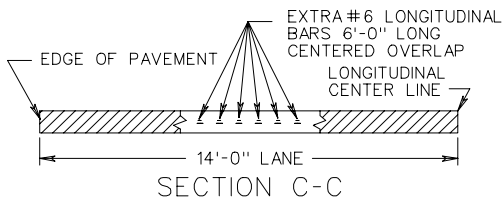
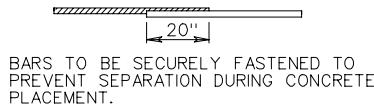


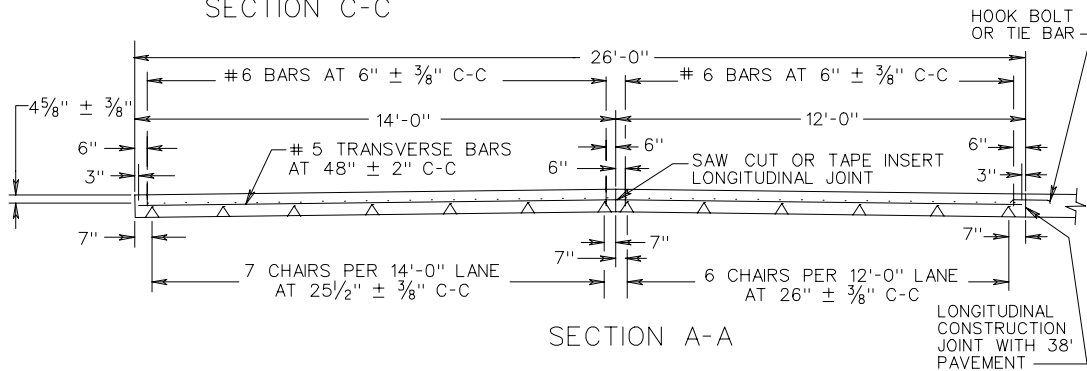
PLAN VIEW  
CONTINUOUSLY REINFORCED CONCRETE PAVEMENT



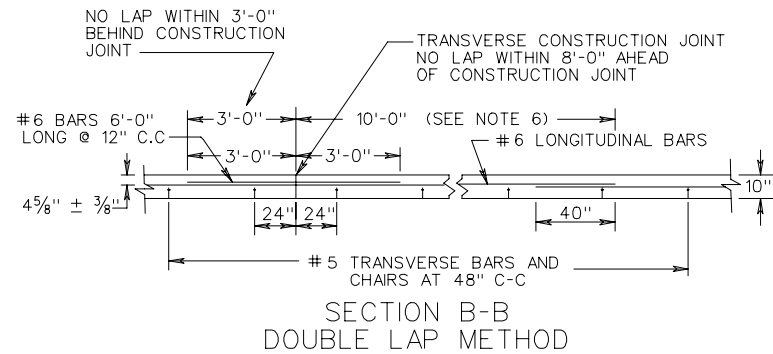
SECTION C-C



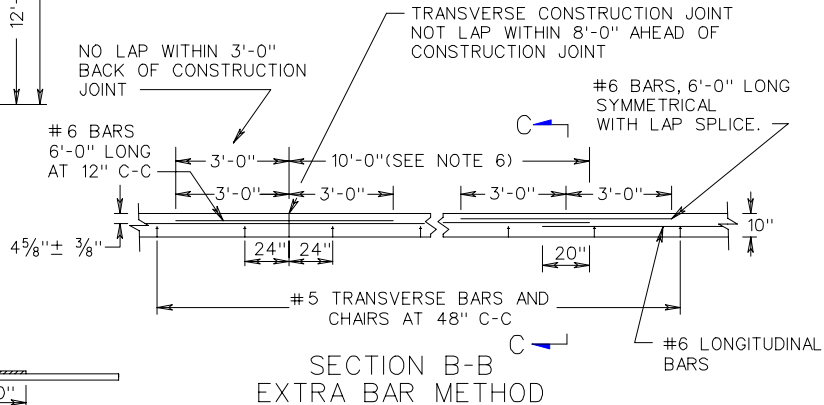
TYPICAL  
LONGITUDINAL LAP



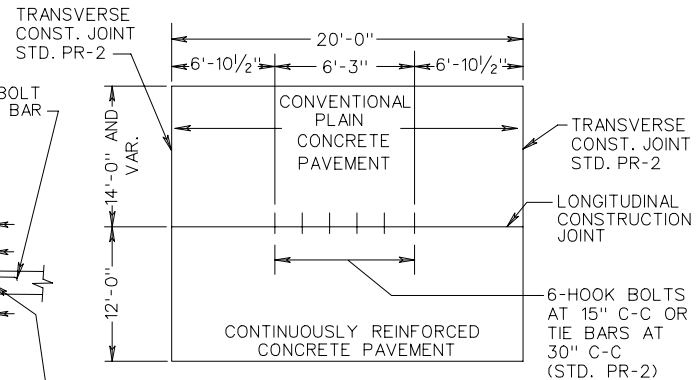
SECTION A-A



SECTION B-B  
DOUBLE LAP METHOD



SECTION B-B  
EXTRA BAR METHOD



PLAN-RAMP & MAIN LINE CONNECTION

10" THICK CONTINUOUSLY REINFORCED CONCRETE PAVEMENT  
14 FOOT TRAVEL LANE

SPECIFICATION  
REFERENCE

316