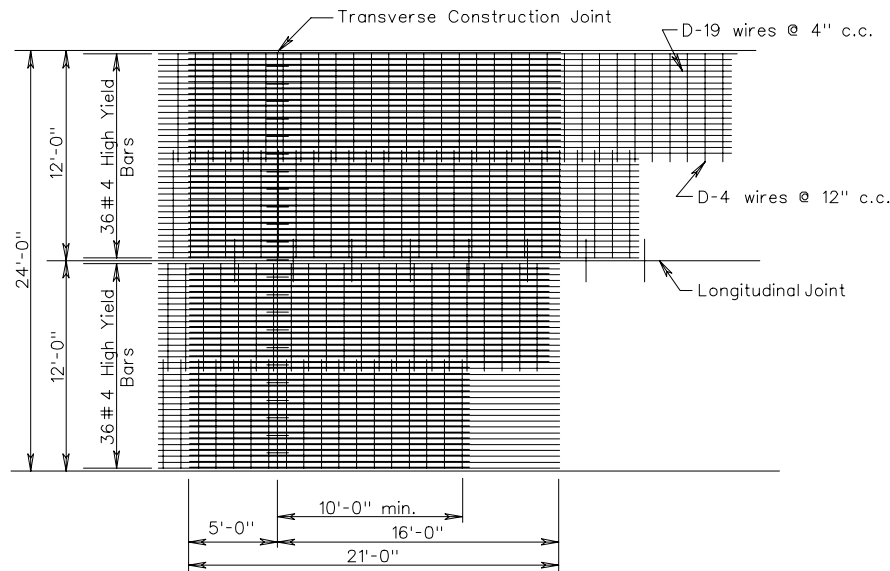


\* Longitudinal steel to continue through joint.

Extra #5 (Grade 60) Bars (21' long) shall be spaced at 12" c.c.

LEAVE OUT JOINT  
FOR USE WITH STEEL BAR REINFORCEMENT



LEAVE OUT JOINT  
FOR USE WITH WIRE MESH REINFORCEMENT

SPECIFICATION REFERENCE
316

## 8" THICK CONTINUOUSLY REINFORCED CONCRETE PAVEMENT (LEAVE OUT JOINT DETAIL)