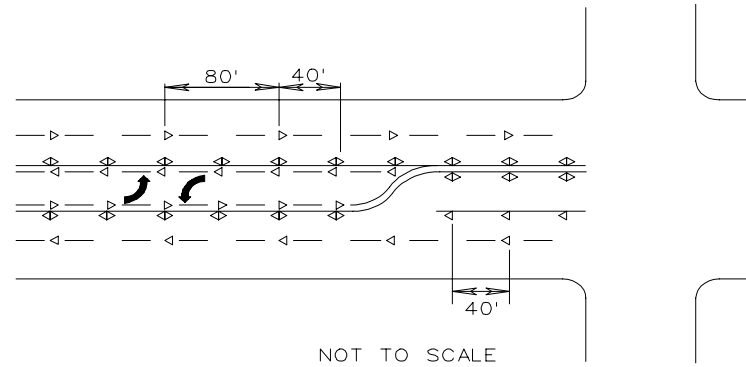
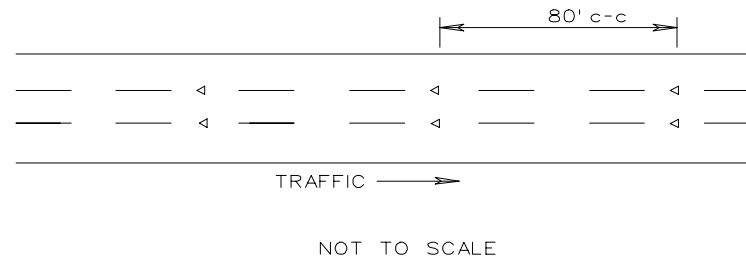


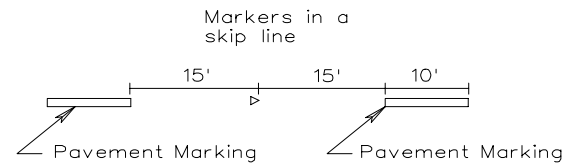
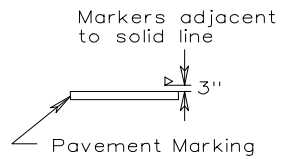
FIVE LANE - CENTER LANE LEFT TURN ONLY



DIVIDED ROADWAYS



GENERAL PLACEMENT:



Notes:

Exact locations of the markers shall be approved by the Engineer prior to installation.

Typical spacing is 40' c-c when used adjacent to a solid line and 80' when used in conjunction with a skip line except that on horizontal curves of 4° or more, the spacing along skip lines and channelizing lines adjacent to turn lanes can be reduced by 1/2 as shown on the plans or as directed by the Engineer.

KEY:

- ◄ Two way
- ◄ One way

TYPICAL PAVEMENT MARKER LOCATION DETAILS

VIRGINIA DEPARTMENT OF TRANSPORTATION