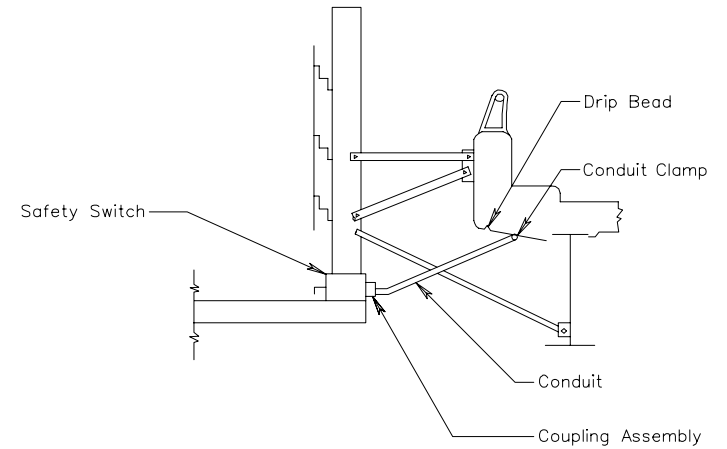


## BRIDGE PARAPET ELECTRICAL DETAILS

NOTES:

The vertical and horizontal conduit runs shall be supported at 10' intervals for metal conduits and 5' intervals for PVC conduit; all bends shall be supported within a minimum of 12" on each side of bend.

Conduit clamps shall be designed for the size and type of conduit indicated. The expansion anchor bolt shall be galvanized or stainless steel,  $\frac{1}{4}$ " diameter embedded a minimum length of 2" with a minimum tensile pullout strength of 500 Lbs. Conduit clamps shall be located 4" minimum from the drip bead.

TYPICAL BRIDGE PARAPET  
ELECTRICAL DETAILS

VIRGINIA DEPARTMENT OF TRANSPORTATION