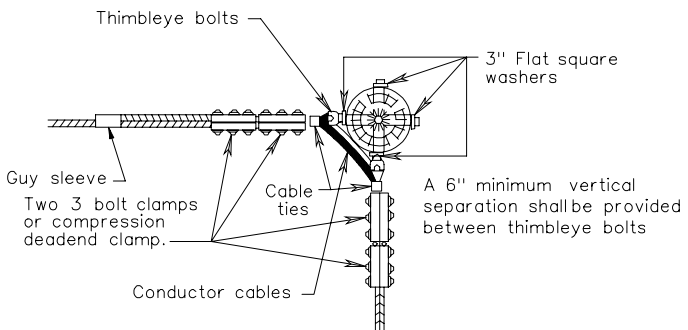


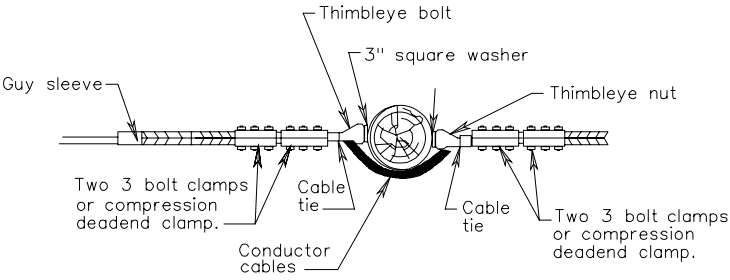
Guy(s) shall be installed in all wood poles. Direction, number and type as necessary to counteracting strain on pole and to compensate for right of way and sidewalk space requirement.

Note:
* Concrete pad required when cabinet mounted on pole in earth areas. (See Standard CTE-1 for pad detail.)

METHODS APPROVED FOR CABLE RUNS



ANGLES LESS THAN 160°



ANGLES GREATER THAN 160°

WOOD POLE WIRING AND RIGGING DETAILS