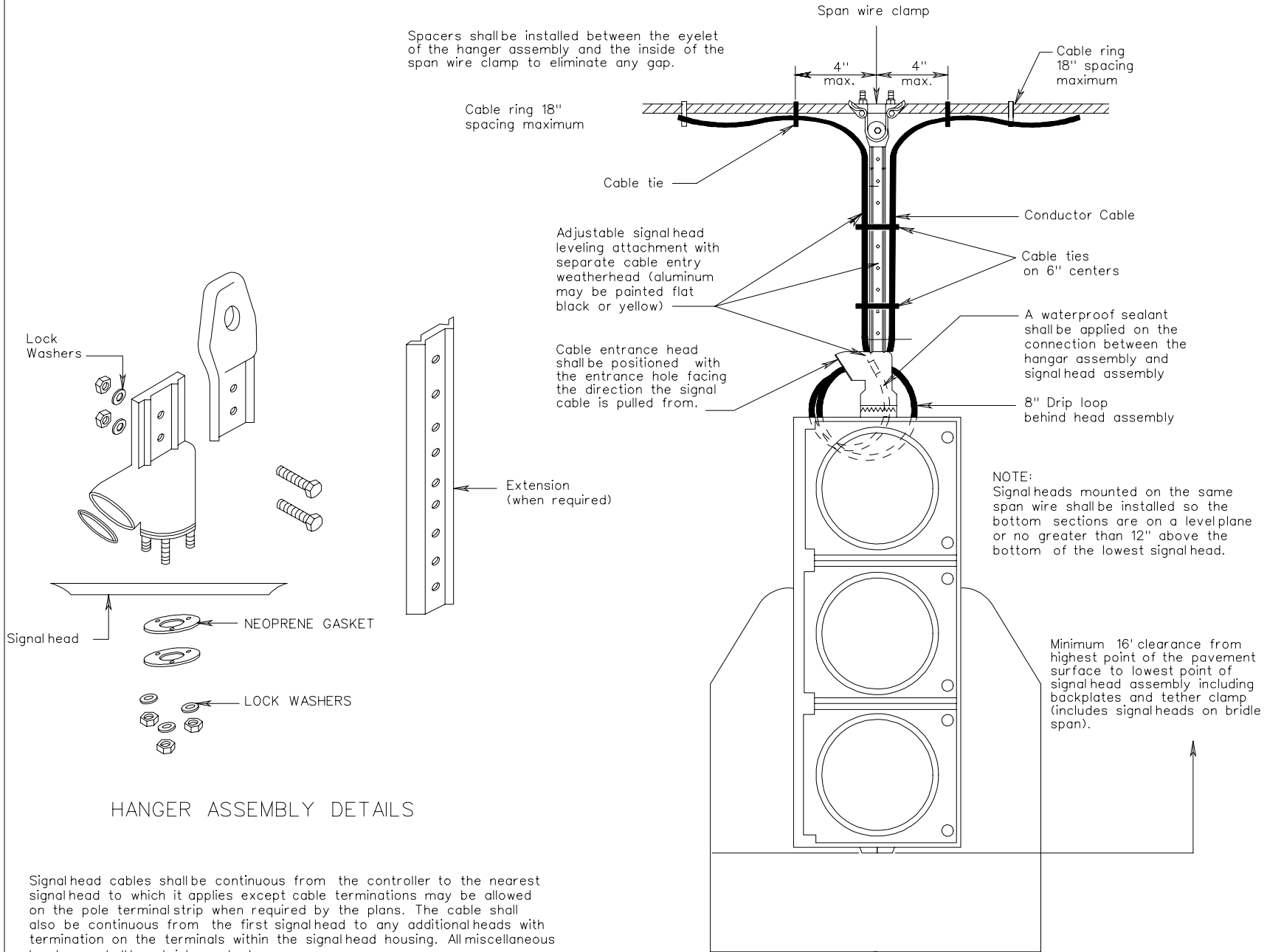


Spacers shall be installed between the eyelet of the hanger assembly and the inside of the span wire clamp to eliminate any gap.



HANGER ASSEMBLY DETAILS

Signal head cables shall be continuous from the controller to the nearest signalhead to which it applies except cable terminations may be allowed on the pole terminalstrip when required by the plans. The cable shall also be continuous from the first signalhead to any additional heads with termination on the terminals within the signalhead housing. All miscellaneous hardware shall be stainless steel.

SIGNAL HEAD MOUNTING DETAILS
SPAN WIRE