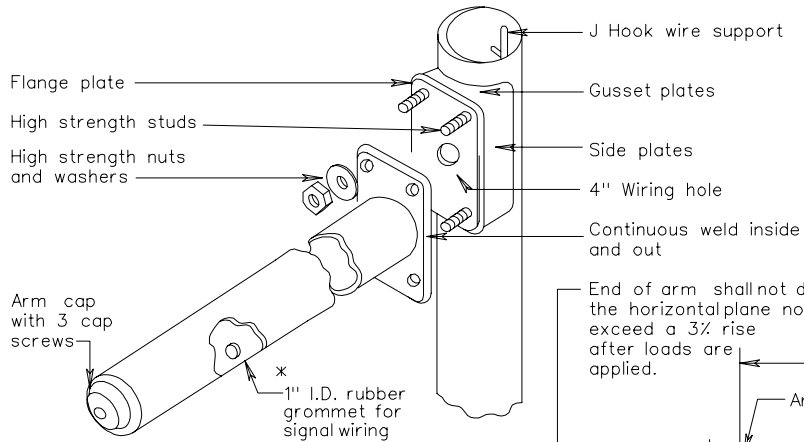
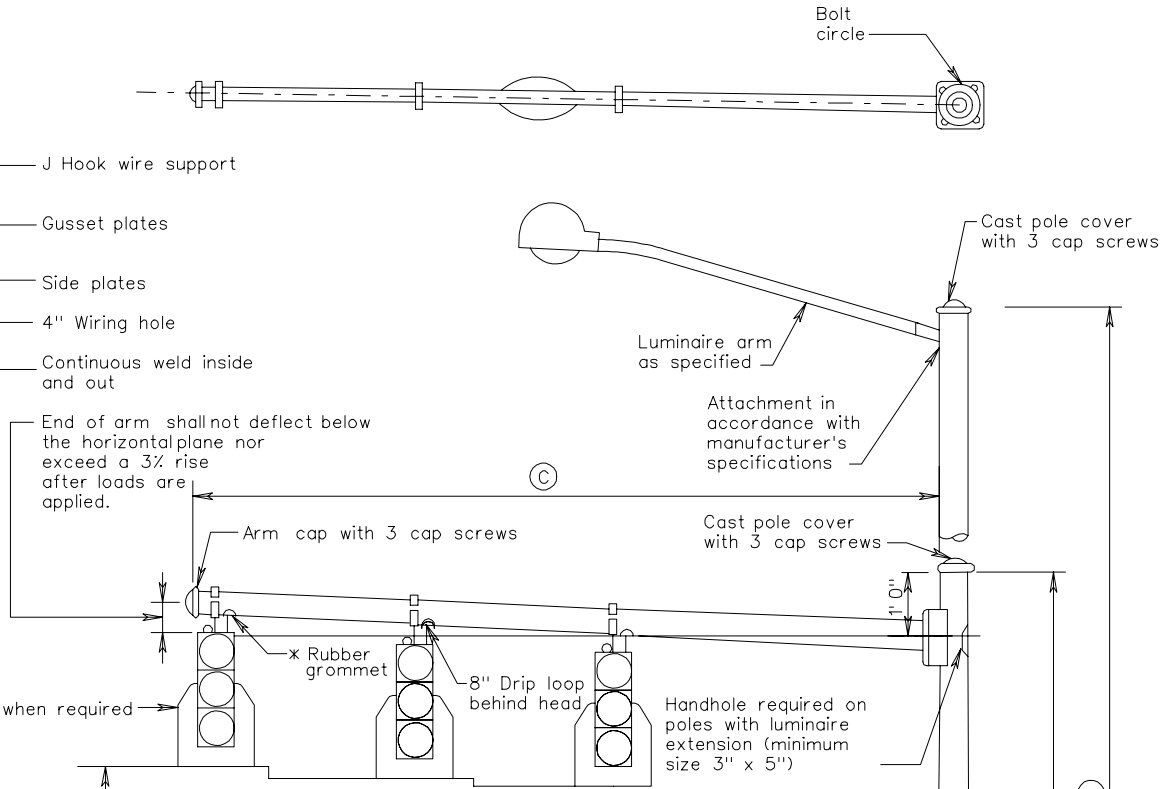


* Hole and grommet for signal wiring shall be located on the side of the arm directly behind the hanger assembly when Standard SM-3 hanger assemblies are required. Signal wiring shall be concealed in the Standard SM-3 hanger assemblies.

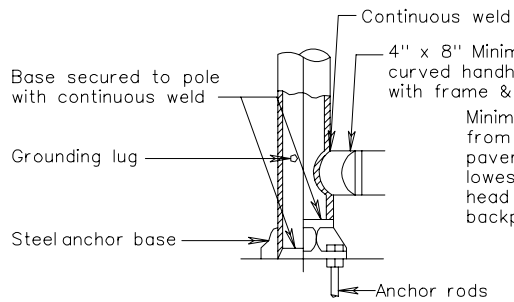


ARM AND SIGNAL ATTACHMENT



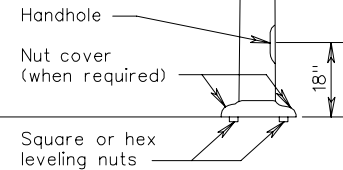
NOTES:

- (A) Pole shaft length and mast arm mounting height shall be as required to obtain specified mounting height of traffic signal heads and luminaires.
- (B) As required by plans (height includes transformer base when required).
- (C) As required by plans



HANDHOLE DETAIL

Minimum 15' clearance from highest point of the pavement surface to lowest point of signal head assembly including backplate.



SIGNAL POLE DETAILS
(MAST ARM AND COMBINATION LUMINAIRE MAST ARM POLE)