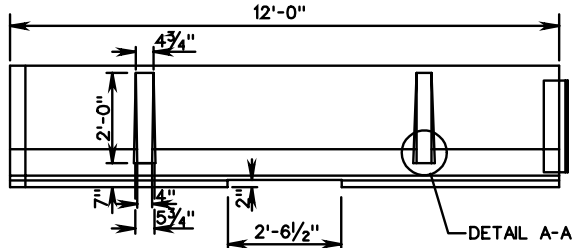
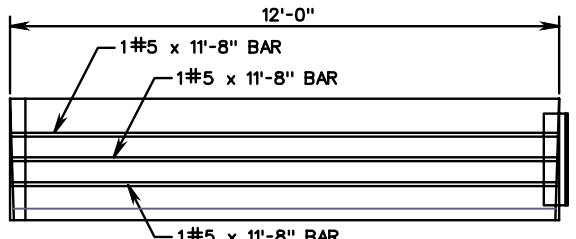




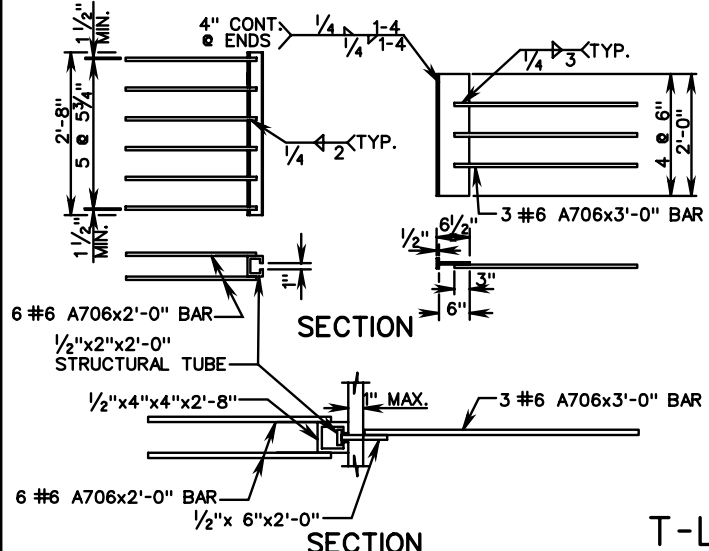
PLAN



ELEVATION

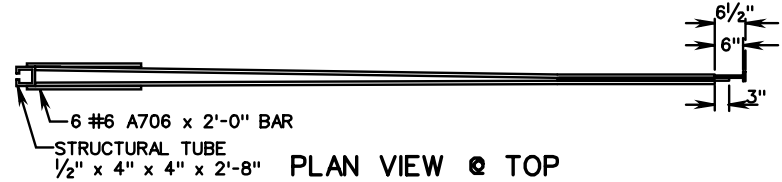


BAR PLACEMENT ELEVATION

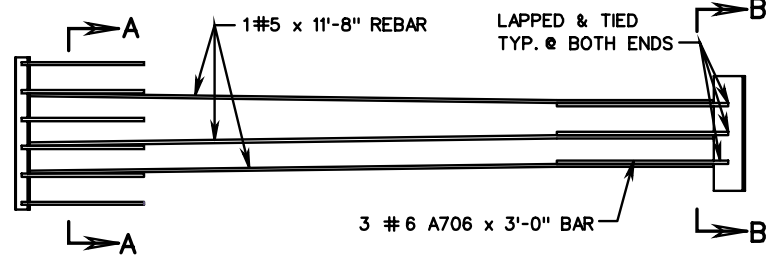


SECTION

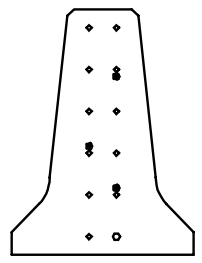
SECTION



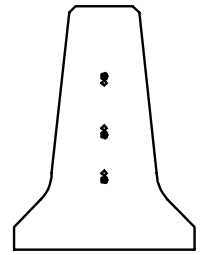
PLAN VIEW @ TOP



REINFORCEMENT DETAIL



SECTION A-A

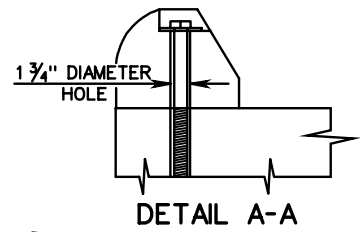
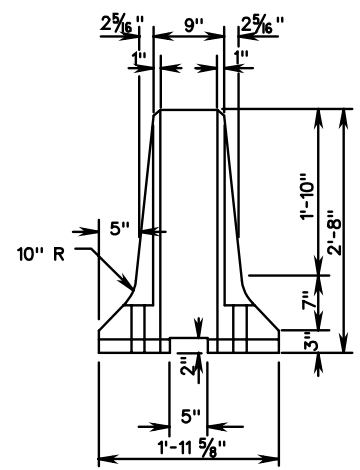


SECTION B-B

LEGEND	
•	11'-8" BAR
○	2' AND 3' BAR

NOTES:

- (1) MINIMUM COMPRESSIVE STRENGTH OF CONCRETE AT THE AGE OF 28 DAYS (FC) SHALL BE 4000 PSI.
- (2) ALL REINFORCEMENT SHALL CONFORM TO ASTM A615, GRADE 60.
- (3) STANDARD BARRIER SECTIONS SHALL BE 12'-0" AS SHOWN OR 18'-0" SHORTER SECTIONS SHALL BE CAST IN REQUIRED LENGTHS AS ONE UNIT. LONGER SECTIONS SHALL BE CAST TO REQUIRED DIMENSIONS IN TWO UNITS.
- (4) ALL EXPOSED METAL IS TO BE GALVANIZED FOR PERMANENT LOCATIONS.
- (5) ALL EXPOSED METAL MAY BE GALVANIZED FOR TEMPORARY LOCATIONS.
- (6) T-LOK AS MANUFACTURED BY ROCKINGHAM PRECAST
- (7) BEGINNING WITH JANUARY 2000 ADVERTISEMENT ALL POSITIVE CONNECTIONS MUST BE APPROVED BY THE FHWA IN ACCORDANCE WITH NCHRP 350 TEST REQUIREMENTS.



DETAIL A-A

T-LOK<sup>®</sup> DETAILS

SPECIFICATION REFERENCE

PRECAST CONCRETE MEDIAN BARRIER POSITIVE CONNECTION OPTIONS