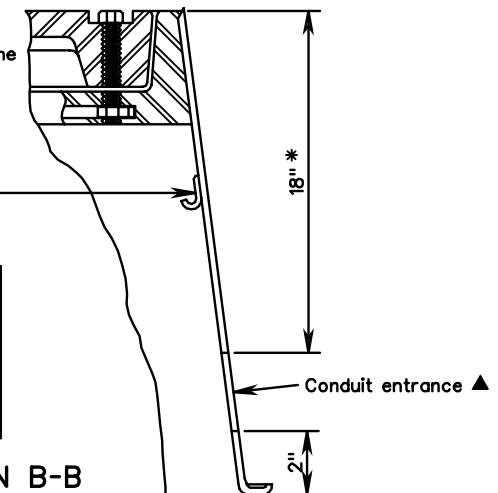


1/8" Neoprene gasket
Permanently attached to frame

J-Hook wire support
6" below top

STANDARD	DIMENSIONS	
	A	B
JB-1C	12"	12"
JB-2C	12"	18"
JB-3C	18"	18"
JB-4C	18"	24"
JB-5C	24"	24"

SECTION A-A



Notes:

Conduit entrances shall be located as shown on the plans.

Bell ends shall be installed on the ends of PVC conduits.
Grounding bushings shall be installed on the ends of metal conduits.
Bell ends and bushings shall be plugged to prevent moisture and rodent entry.

Depth of conduit entrance for use of magnetic detectors shall be in accordance with Standard TD-2.

The junction box shall be of a polymer concrete with fiberglass sides.

The cover shall have a non-skid surface with letters cast in the depression on top. The letters "VDOT ELEC", "VDOT TRAF", "VDOT COMM" or "UTILITY" as applicable are to be 1" wide and raised 1/4" high. Covers used for junction boxes installed within municipalities shall not require the VDOT reference.

All junction boxes shall be installed with a ground rod unless box houses only communication/interconnect cable.

Two recessed 3/8" Hex head bolts are required for each cover.

▲ A minimum 2" diameter conduit entrance is required, unless otherwise specified on the plans.

A concrete collar is required only when junction box is installed in earth areas.

Conduits shall extend 2" to 3" max. beyond the inside wall of the junction box.

The junction box may be a two piece design with the top section no less than 17" in depth.

Voids resulting from entrance of conduits into junction boxes shall be completely filled with an appropriate material.

JUNCTION BOX